

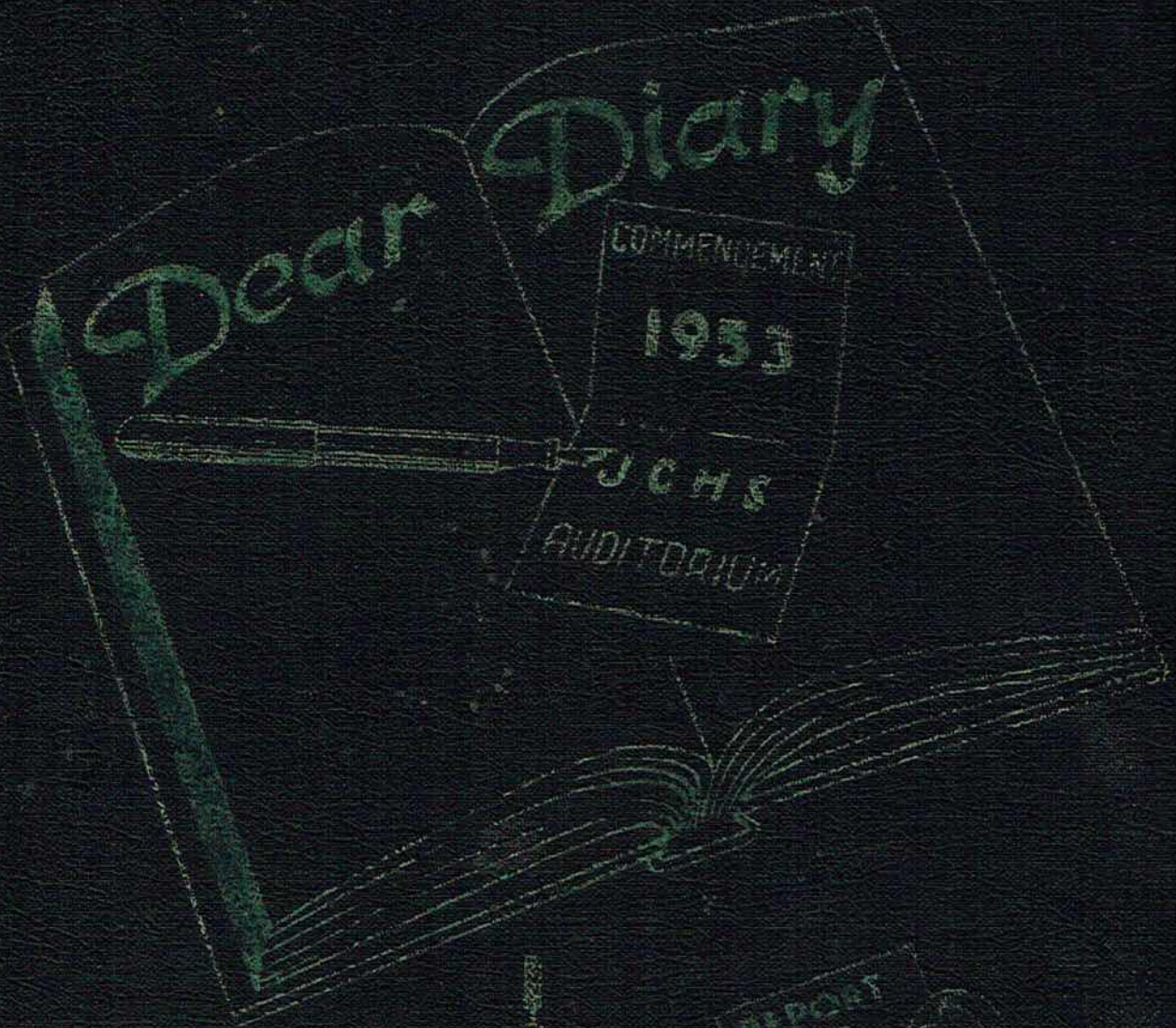
The Reminder

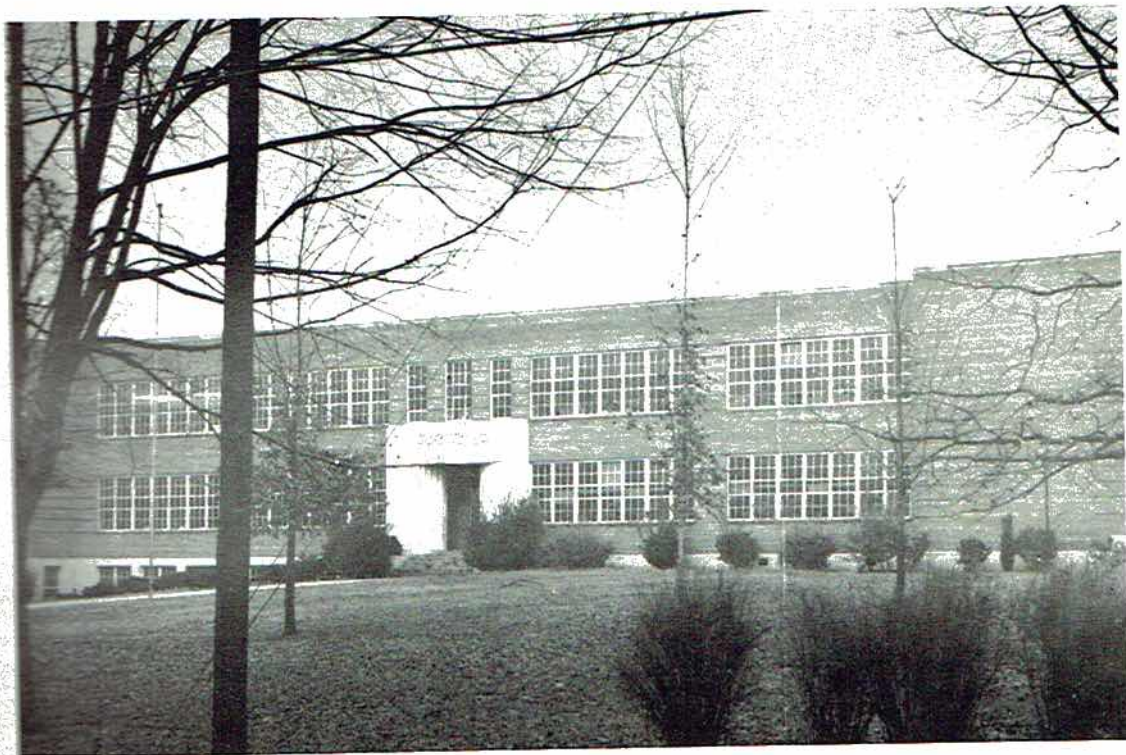
1

9

5

3





Jackson High School, listen to us,
To our vows of love,
To ourselves and to each other
Faithful friends we'll prove.

High School days are swiftly fleeing,
Soon we'll leave thy halls,
Ne'er to join another meeting,
In thy hallowed walls.

So farewell dear Alma Mater,
May thy name we pray,
Be revered ever pure and stainless,
As it is today.

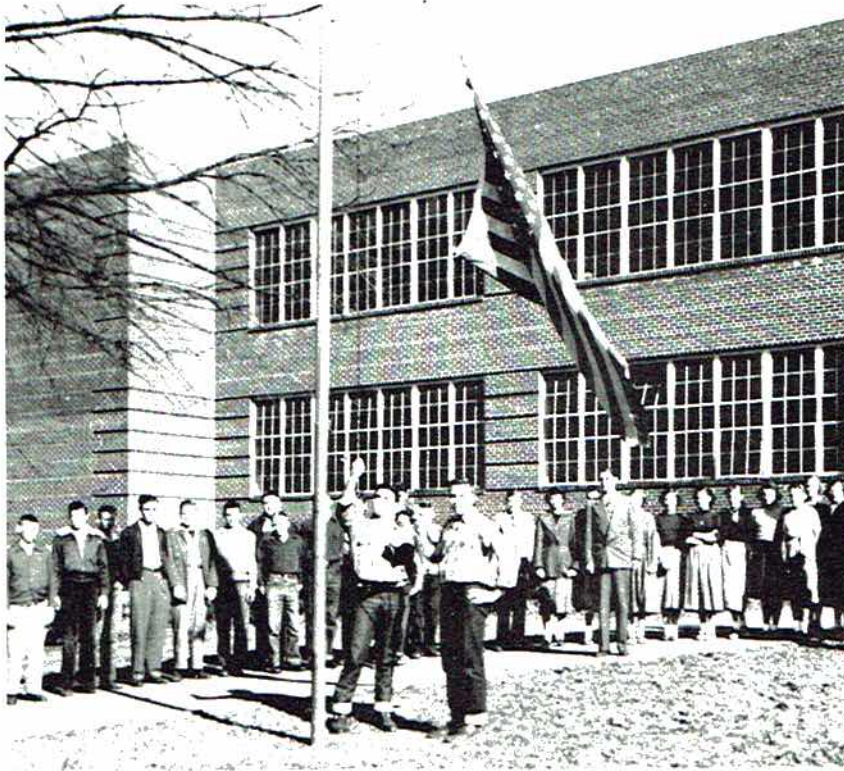
Chorus:

Faithful, loyal, firm and true
Heart bound to heart will beat,
Year by year the ages through
Until in Heaven we'll meet.

Foreword

The pictures presented in this yearbook strive to give a reasonably correct impression of school activities and achievements. There are omissions but we have tried to include those things that are most sacred to us. It is our hope that the memories called to life by these pictures will all be pleasant ones.

To all those people who helped in any way, but especially to Miss Porter, our sponsor; and to our subscribers the staff says a heartfelt "Thank you".



Dedication

This Reminder is dedicated to our country's flag, and especially to the one, that, for six years, has been our symbol of a democracy in action-Jackson County High School.

MALCOLM G. COUCH
Principal



MRS. GEORGE L. ARMSTRONG
English, Math
RAYMOND W. BATES
Driving, Math
Q. K. CARTER
Basketball Coach



MRS. MALCOLM G. COUCH
Library
MRS. NEWMAN T. DAVIS
English, Public Speaking,
Family Living
MISS BEATRICE FINNEY
Core, English



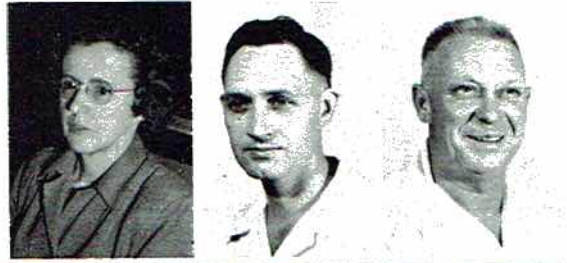
MRS. HOLLIS HAMBRICK
Democracy, English
MRS. DELBERT HICKS
English
MRS. J. FRANK HODGES
Glee Club, Math



MRS. RUDOLPH JONES
Social Studies, English
MRS. J. A. LEE
Science
MRS. SAM McCRARY
Math, Core



MISS CORA MICHAELS
Math
LEWIS W. PAGE
Social Studies
H. E. PHILLIPS
Agriculture



MISS LILLY PORTER
Science
MRS. WILLIAM T. SLOAN
Physical Education
WILLIAM T. SLOAN
Science, Math



MRS. ED SPEAR
Commercial
ED SPEAR
Football Coach
MISS GERTUDE STOCKTON
Science, Core



MRS. BOYD TURNER
Home Economics
MRS. GAY VAUGHT
Core, English



MISS VIRGINIA WEST
Core, English
J. H. WHEELER
Social Studies



Camera Shy-
GEORGE BAKER
Band



History

Lo, there comes forth that day when school is to end. Suddenly it is upon us, and there is a history to be recorded. Just a few years ago the members of Jackson County High School 1953 class were all in confusion and chaos as to why we were here and what we were doing.

We entered junior high school in either Scottsboro, Macedonia, Dutton, Section, Limrock, or Hollywood. For the first time we had different rooms and different teachers, instead of one room and one teacher as heretofore. There were 4-H clubs, ball games and tournaments.

The 1951 Senior One conglomerate became four homologous homeroom groups. Because of the privilege of elective subjects, each class or study hall of the seven period day was made up of different students.

There were more clubs and extra-curricular activities: Glee club, F. T. A., F. F. A., F. H. A., the Wildcat, the Reminder, Band, and cheerleaders. Some were skillful enough to make the varsity football or basketball teams.

After passing the compulsory school age many yielded to the temptations of the outside world. Several girls were hit by Cupid's dart, while money lured others to jobs.

Senior two activities included salesmanship experience in the concession stand at football games. The profit financed the never-to-be-forgotten Junior-Senior banquet.

For the first time in JCHS history, seniors outgrew two groups and a third was formed. The student body had grown too large for frequent assemblies; however we became accustomed to the voice of Mr. Couch over the Public Address System saying, "Attention all homerooms -"

In addition to individual pictures for the Annual being made there were the ones for the group to be hung in the hall.

Dates to be remembered included: measuring for caps and gowns, and rings, ordering invitations, oratorical contests, Career Day, Senior Day, and State Senior Test Day. Equal in importance was the banquet given in our honor by the Senior II's.

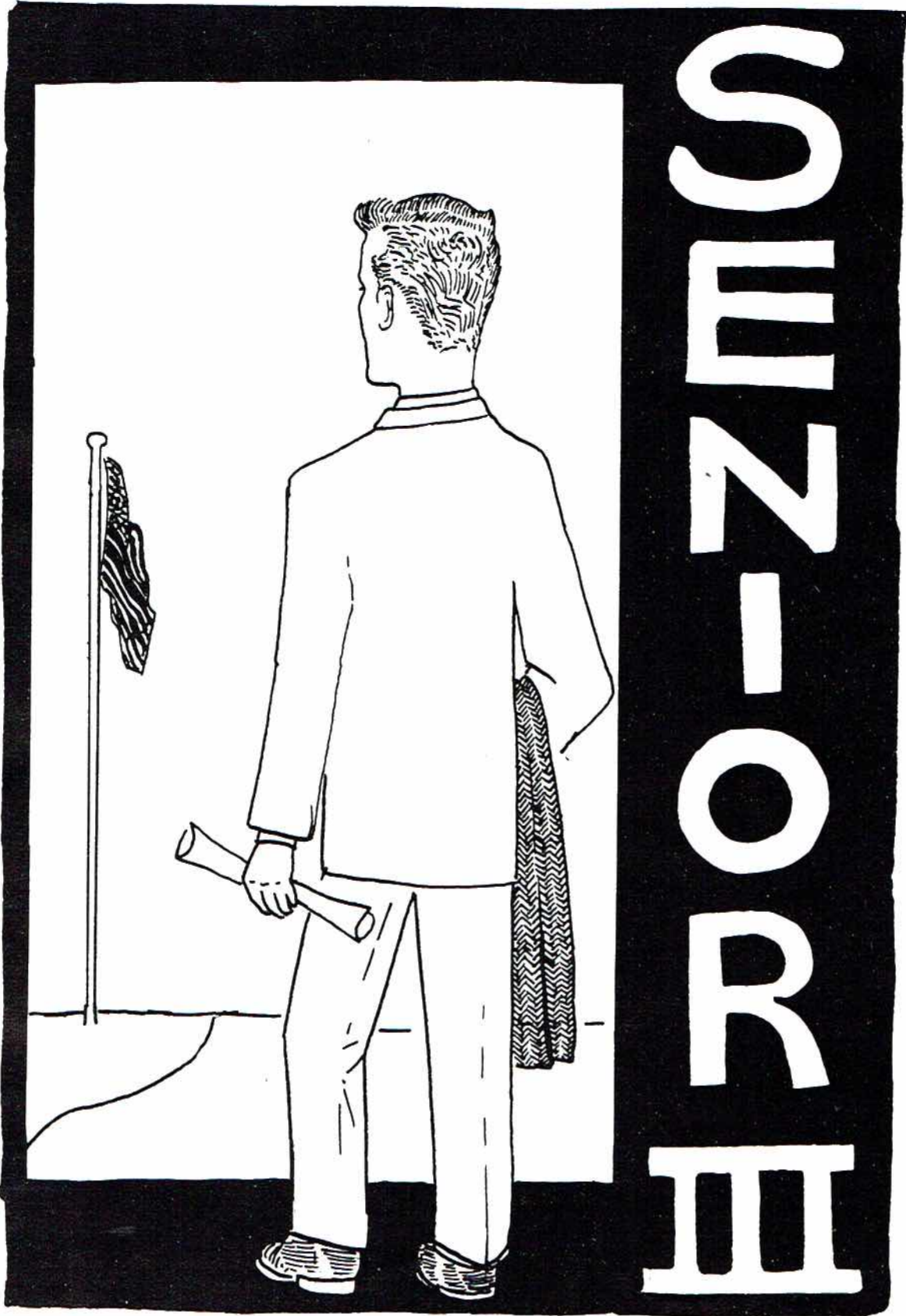
A magazine subscription sales campaign was launched to provide money for a class trip.

In spite of our heterogeneous activities the teachers expected some studying to be done.

Then Graduation Night when we took that long looked-forward-to march across the stage for our diplomas.

Lastly our separation, each to take his respective role in world activities.

Dorthan Black



PRO-ZIMUS



TOMMY McCUTCHEN
Vice Pres.

BOBBY PAYNE
Pres.

JACKIE HAMILTON
Treas.

BETTYE RAY
Sec.

RUTH ALLISON,
Scottsboro
Glee Club - President
'48-'49, Sec-Treas.
'50-'51, '52-'53; FHA
President '50-'51, '52-'53



ROY AMBRESTER,
Scottsboro
Football '49, '50, '51, '52,
'53; J Club '52-'53; Glee
Club '50-'51, '52-'53 -
State Festival '51; State
Chorus '52; Boy's State
'52; Wildcat Staff '52-'53;
Official Flag Raiser '52-'53

BILL ARNOLD,
Larkinsville
Agt. of Arms FFA



BONNIE ASHMORE,
Scottsboro
Glee Club '47-'48, '49-'50;
4-H Club '47, '48, '49

ARCHIE BARCLEY,
Scottsboro
Football '46, '47, '48, '49,
'50; Basketball '48, '49, '50;
Cheerleader '48-'49, '52-'53;
J Club '48-'49, '50-'51,
'52-'53; Wildcat Staff
'52-'53



PAT BATES,
Scottsboro
Reminder Staff '52-'53;
Wildcat Staff '51-'52;
Cheerleader '50-'51; Band
'49-'50

RODNEY BELL,
Scottsboro



LOUISE BENEFIELD,
Section
FHA '50, '51, '52; Glee
Club '52, '53



Black
DORTHAN BLACK,
Macedonia
FTA '51, '52, '53; Class
Historian '53



SHELIA JANE BLANSIT,
Dutton
Glee Club '52, '53; FHA
'50, '51, '52



BOBBY BOOZER,
Macedonia
FFA '50, '51, '52, '53



MARGARET BRADFORD,
Fackler
FHA '50, '51, '52; Glee
Club '51, '52, '53



PAUL BRANDON,
Pikeville
Sec. FFA '52, '53



BETTYE FAYE BRITT,
Macedonia
FHA '50, '51



RAY BROWN,
Section
FFA '50, '51



CARMON JOYCE BRYANT,
Dutton
FHA '50, '51; 4-H Club
'50



JOHNNY CAMPBELL,
 Scottsboro
 Junior Basketball '49-'50;
 Band '49-'50; Basketball
 '51-'52



BILL CAPERTON,
 Fackler

BOBBY CARTER,
 Scottsboro
 Basketball '51-'52,
 '52-'53

*deceased
1994*



SHIRLEY CARTER,
 Scottsboro
 Glee Club '48, '52-'53;
 Spanish Club '50-'51;
 Wildcat Staff '50-'51, '52-
 '53; Reminder Staff '52-'53

*deceased
1987*

VIRGINIA CARTER,
 Scottsboro
 Glee Club '52-'53; Home
 Economic '52-'53; Wildcat
 Staff '52-'53



AUBREY D. CHANDLER,
 Scottsboro
 F. F. A. '51-'52

Do

JANET CONLEY,
 Scottsboro
 Wildcat Staff '47-'48,
 '48-'49, '51-'52, '52-'53;
 Annual Staff '51-'52, '51-
 '52; Spanish Club '50-'51,
 '51-'52



CLEABURN CHRISMAN,
 Scottsboro
 Football '50, '51, '52;
 Baseball '49, '50, '52; J.
 Club '52-'53

[scribble]

SHIRLEY CRAWFORD,
 Hollywood
 F. H. A. '50-'51; Band
 '50-'51; Glee Club '52-
 '53; Reminder Staff
 '52-'53

*deceased
1970*



JOYCE DAVIS,
 Hodge
 F. H. A. '50-'51

JEANETTE DEAN,
Tupelo
FHA '50-'51; 4-H Club
'47, '48, '49; Glee Club
'50, '51, '52, '53



AUDIE JO DEERMAN,
Section
Band '52-'53; FHA '50,
'51, '52; 4-H Club '47,
'48, '49, '50, '51, '52;
Wildcat Staff '51, '52, '53



MARGARET DICKERSON,
Section
FHA '50 '51, '52-'53



CHARLOTTE DILBECK,
Section
4-H Club '46, '47, '48, '49;
FHA '50, '51, '52; FTA
'51, '52, '53



deceased 1976

DICK DOREMUS,
Scottsboro
Football '51, '52, '53;
Basketball '50, '51, '52, '53;
Annual Staff '50, '51; Wild-
cat Staff '50, '51, '52; J
Club '52-'53



MAZELL DUKES,
Section
FHA '50, '51, '52, '53



WANNIE EVANS
FFA '51, '52, '53; Football
'52-'53



JANE FERGUSON,
Tupelo
4-H Club '47, '48, '49;
FHA '50, '51, '52, '53;
Wildcat Staff '50-'51;
Glee Club '51, '52, '53



DEAN GENTLE,
Limrock



CAROLYN GIST,
Scottsboro
Band '49, '50, '51, '52, '53;
FHA '52-'53; Annual Staff
'51-'52; Wildcat Staff
'50-'51, '52-'53; Spanish
Club '51-'52; Glee Club
'47, '48, '49, '50



BILLY MAX HALE,
Hodge
Basketball '51, '52, '53



FRANCES ELIZABETH
HALL,
Larkinsville
Head Majorette '51-'52;
Wildcat Staff '50, '51, '52;
FHA '50, '51, '52, '53

FANNIE PEARL HALL,
Scottsboro
FHA '50, '51, '52, '53



JACKIE HAMILTON,
Macedonia
FHA '50-'52; FTA '51,
'52, '53; Student Council
'52-'53; Class Treasurer
'52-'53

WOODY HAMILTON,
Section



PATRICIA JANE HARPER,
Larkinsville
4H Club '47, '48, '49;
FTA '51, '52, '53

SHIRLEY DELL HEADRICK,
Dutton
FHA '49-'50; Glee Club
'52-'53



THOMAS HENDERSON,
Hollywood
FHA '50, '51, '52, '53; Pres.
FFA '52-'53; Football
'52-'53; Sec. 4-H Club
'46-'47; J Club '52-'53

BARNEY GILFORD HICKS,
Scottsboro
Glee Club-Vice Pres. '51-
'52, Pres. '52-'53; Band
'51-'52; Football Manager
'50-'51; Student Council
'50-'51; J. Club '52-'53;
Wildcat Staff '50-'51;
Cheerleader '52-'53; Jr.
Basketball '50-'51



JANE HODGES,
Scottsboro
Glee Club '47, '48, '49, '50,
'51, '52, Sec. '47, '48, '49;
Treas. '51-'52; FHA '50-'51
FTA '51, '52, '53; Annual
Staff '52-'53

LINA HOLDER, *deceased*
 Fackler
 Student Council '49-'50;
 FHA '50, '51; Wildcat
 Staff '51-'52; FTA '51,
 '52, '53; Vice-president
 FTA '52-'53; Glee Club
 '52-'53; Cheerleader
 '52-'53



SUE WOMACK HOLLAND,
 Scottsboro
 FTA '47-'48, '49-'50,
 '50-'51, '51-'52, '52-'53;
 FHA '49-'50; Glee Club
 '52-'53; Secretary '52-'53

BILLY RAY JAMES, *deceased 1995*
 Scottsboro
 FFA '50-'51, '51-'52,
 '52-'53



JOY JAMES, *deceased*
 Randall's Chapel
 FHA '51-'52, '52-'53;
 President FHA '52-'53;
 Glee Club '52-'53

MARY LISBETH JONES,
 Scottsboro
 Band '47-'48; Jr. Cheer-
 leader '48-'49; Spanish
 Club '51-'52; Annual Staff
 '51-'52, '52-'53; Wildcat
 Staff '48-'49, '51-'52,
 '52-'53; Business Manager
 Wildcat '51-'52



BETTY KEEBLE,
 Scottsboro
 Student Council '51-'52;
 Homecoming Queen '52-'53;
 Wildcat Staff '51-'52,
 '52-'53; Reminder Staff
 '52-'53; Band '49-'50,
 '50-'51, '51-'52; Secretary
 Band '51-'52; Spanish Club
 '51-'52

BOBBY KENNAMER,
 Scottsboro
 Football Manager '50-'51;
 FFA '52-'53; J Club '52-'53



BARBARA KENT,
 Scottsboro
 Band '50-'51; Spanish
 Club '51-'52

deceased
 AILEENE KNIGHT,
 Aspel
 Glee Club '51-'52, '52-'53



ADDIE RUTH LACKEY,
 New Hope
 4 H Club '47-'48; FHA '50-'51;
 Glee Club '51-'52, '53; Student
 Council '47-'48; Wild Cat
 Staff '52-'53

JOYCE LEMONS,
 Scottsboro
 Glee Club '49, '50, '51, '52,
 '53; FHA '50, '51



CAROLYN ANN LEWIS,
 Scottsboro
 Student Council '48-'49;
 Wildcat Staff '50, '51,
 '52, '53; Band '51, '52, '53;
 Treas. FHA '50-'51; An-
 nual '50, '51, '52, '53;
 Spanish Club '50-'51

GLETA LINVILLE,
 Section
 FHA, Pres. '52-'53; FTA
 '50-'51; Band '50-'51;
 Glee Club, Reporter '52-'53;
 Student Council '52-'53



WINOLA McCUTCHEN,
 Macedonia
 FHA '50-'51

TOMMY McCUTCHEN,
 Scottsboro
 4-H Club, Pres. '46, '47,
 '48; Vice Pres. Sr. Class;
 Football '51, '52



ANN MAPLES,
 Scottsboro *Ellen 1943*
 Band '48, '49, '50, '51, '52,
 '53, Pres. '50-'51; Student
 Council '48, '49, '50, '51,
 '52, '53, Sec. Treas. Stu-
 dent Council '50-'51;
 Spanish Club '50-'51, Sec-
 retary; Vice Pres. Jr. Class
 '51-'52; Wildcat Staff '49,
 '50, '51, '52, '53, Assist-
 ant Editor '51-'52, Editor-
 in-chief '52-'53; Reminder
 Staff '51, '52, '53

ROBERT MICHAELS
 Langston
 FFA '50, '51, '52, '53



MARY FRANCES MILLICAN,
 Scottsboro
 FTA '51, '52, '53, Secretary
 '52, '53; Annual '52, '53;
 4-H Club '48-'49

HERSCHEL MOORE
 FFA '50, '51, '52, '53, Treas.
 '52-'53



BRASTEL MATTHEWS,
 Frackler

JO ANN MOORE,
Scottsboro
FHA '51, '52, '53



deceased
WALTER MOORE,
Section
FFA '50, '51, '52, '53; Bas-
ketball '51, '52

MALOY MURPHREE,
Dutton



RAYMOND NIX,
Scottsboro
Basketball '51, '52, '53;
FFA '51, '52, '53

MARY GRACE PACE,
Fackler
FHA '50, '51; Glee Club
'52, '53



LOUISE PACE,
Scottsboro
Glee Club '47, '48, '49, '50,
'51; Band '50, '51; 4-H
Club '47, '48, '49

deceased
TEDDY HUGH PATTERSON,
Section



BOBBY PAYNE,
Scottsboro
Band '48-'49, '50-'51;
President Spanish Club
'50-'51; Vice-President
Student Council '51-'52;
Student Council '51, '52,
'53; Wildcat Staff '52-'53;
Football Co-Captain '52,
'53; President of Sr. Class
'52-'53; Official Bugler
'50, '51, '52, '53

deceased
PRESLEY PENDERGRASS,
Scottsboro
President Student Council
'52-'53; Circulation Mgr.
Wildcat '52-'53; Annual
'51, '52, '53; Glee Club
'47, '48, '49, '50, '51; Boys'
State '52; Spanish Club
'50, '51



JACK PHILLIPS,
Scottsboro
Football '47, '48, '49, '50,
'51, '52, '53; J Club '50,
'51, '52, '53; Glee Club
'51, '52, '53; Boys' State
'52; Wildcat '52-'53; Of-
ficial Flag Raiser '52, '53

WALTER CARL PICKETT,
Section
F. F. A. '50-'51, '52-'53;
Basketball '50-'51, '51-'52



WILLODEAN POPE,
Dutton
FHA '50-'51, '52-'53;
Glee Club '52-'53



JANE PRESTON,
Scottsboro
FHA '51-'52; Band '49-'50



MILDRED PROCTOR,
Tupelo
FHA '50-'51, '51-'52, Re-
porter '51-'52; Glee Club
'49-'50, '50-'51, '52-'53



BETTYE RAY,
Scottsboro
Student Council '52-'53;
Wildeat Staff '52-'53; Sr.
Class Officer '52-'53;
Spanish Club '50-'51;
Annual Staff '52-'53



ROY REED,
Scottsboro



JANE RILEY,
Scottsboro
F. H. A. '52-'53; F. T. A.
'52-'53; Annual Staff
'52-'53

*Revised
2002*



EUGENE ROGERS,
Hollywood
F. F. A. '50-'51, '51-'52,
'52-'53



JAMES ROUNSAVALL,
Scottsboro
Basketball '51-'52, '52-'53;
Glee Club '49-'50, '50-'51,
'52-'53



JAMES W. RUSSELL,
Section
F. F. A. '50-'51; F. T. A.
'52-'53



ANNIE RUTH SELBY,
Larkinsville



ERLINE SISK,
Scottsboro



GARY SIZEMORE,
Scottsboro
Sec of Class '51-'52;
Football '51-'52; Band
'48, '49, '50; Wildcat
Staff '50, '51, '52; Photog-
raphy Club '51-'52;
Reminder Staff '51, '52,
'53, Business Mgr. '52-'53



GENEVA SMITH,
Scottsboro
4-H Club '47, '48, '49



FRED SOTHERLAND,
Preston
FFA '51, '52, '53



WINFRED STEWART,
Scottsboro



GENE STEWART,
Larkinsville
Band '49, '50, '51, '52;
Glee Club '48-'49



MARY FAUZANNE STRAWN,
Section
FHA '50, '51, '52



MARY DELL SWAIM,
Scottsboro
FTA '46, '47, '48, '49, '50,
'51, '52, '53, Pres. '52-'53;
Wildcat Staff '49, '50, '51;
Annual Staff '51, '52, '53,
Assistant editor '51-'52,
Editor '52-'53; Girls' State
'52; Good Citizenship Girl
'52-'53; Spanish Club '50,
'51, '52, Vice pres. '50-'51



HAZEL SWEARENGIN,
Larkinsville
Glee Club '47, '48, '49, '50,
'51, '52, '53; 4-H Club
'47-'48



MARY DAISY TALKINGTON,
Larkinsville



BOBBIE ANN TALLEY,
Randall's Chapel
F. H. A. '49-'50; Glee
Club '52-'53

JOHNSIE THOMAS,
New Hope
Football '51-'52, '52-'53;
Glee Club '47-'48; J Club
'52-'53; F. F. A. '50-'51,
'51-'52, '52-'53, Sec.
'51-'52, Reporter '52-'53



deceased
JEWELL THOMAS,
Carns
F. H. A. '50-'51

WANDA FAYE TRAYLOR,
Dutton
F. H. A. '50-'51; Glee Club
'52-'53



HAZEL WELBORN,
Section
F. H. A. '51-'52; Glee
Club '52-'53

ADDIE RUTH WEST,
Randalls Chapel
Glee Club '52-'53; 4-H
Club '47-'48, '48-'49



CHARLES WHITE,
Scottsboro
Basketball '51-'52; F. F. A.
'50-'51, '51-'52

MARY LOU WHITEHEAD,
Randalls Chapel
4-H Club '46-'47; F. H. A.
'49-'50, '52-'53



FANNIE RUTH WILKERSON,
Hollywood
F. H. A. '50-'51, '51-'52;
Glee Club '52-'53

MARY FRANCES
WILKINSON,
Fackler
FHA '50, '51; Glee Club
'52, '53



LUCINDA WININGER,
Pikeville
Student Council '49-'50,
'50-'51; FHA '50-'51; Sec.
Glee Club '52-'53; 4-H
Club '47, '48, '49

JIMMIE RUTH YANCY,
Section
4-H Club '46, '47, '48;
FHA '50, '51, '52, Sec.
'51-'52



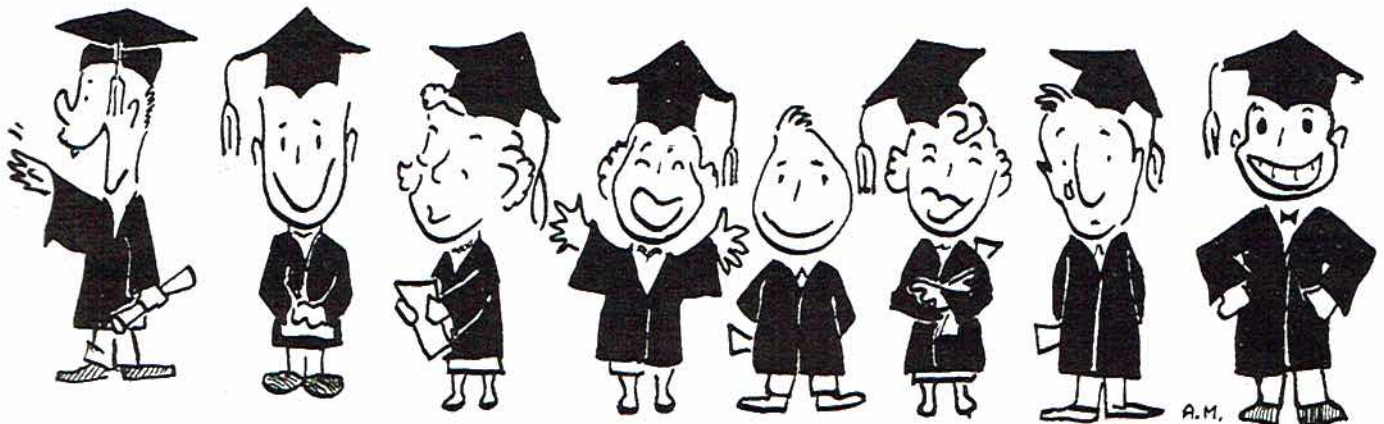
CAMERA SHY

VIRGINIA RUTH HILLEY,
Section
FHA '50-'51

AUBREY LEE OUTLAW,
Section
FFA '50, '51, '52, Sec. '50-'51

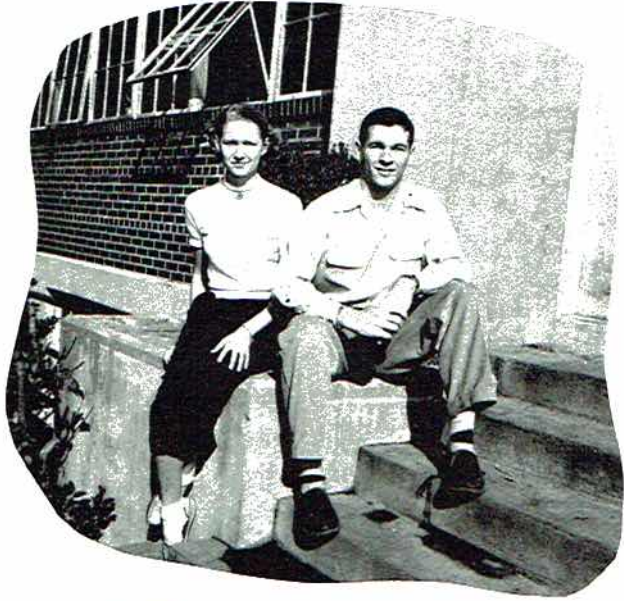
MILDRED HOLLOWAY,
Scottsboro
FHA '48-'49, Sec. & Treas. '48-'49

CHARLOTTE MEWBORN, *deceased*
Section
FHA '48, '49, '52

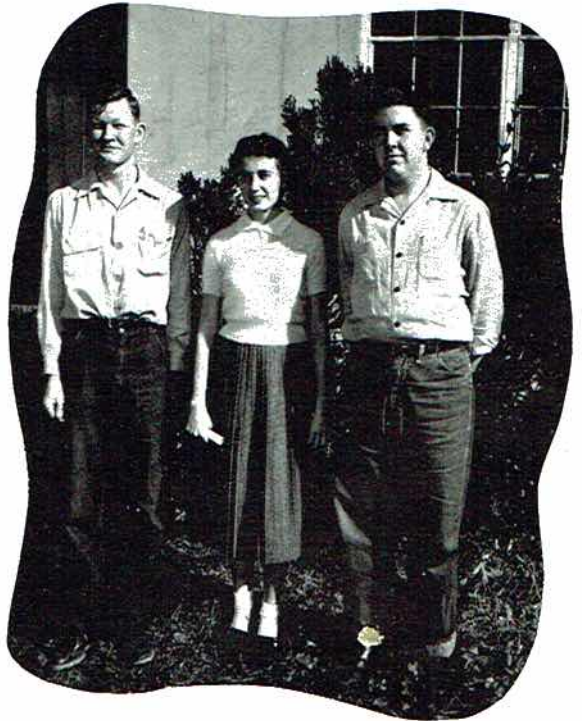


A.M.

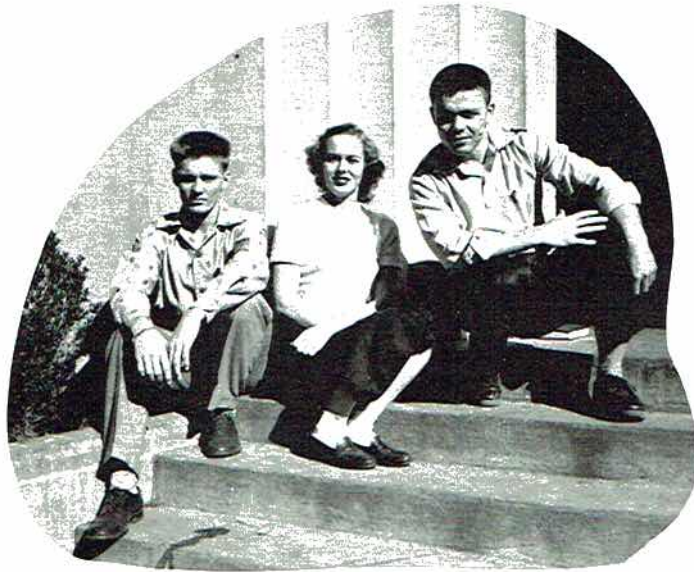
W T I O S W T I O



MARY DELL SWAIM; Most courteous,
Best All Round and Teacher's Pet.
BOBBY PAYNE; Handsomest, Best All
Round, Teacher's Pet.



DORTHAN BLACK; Most Studious.
ANN MAPLES; Most Studious, Most
Likely to Succeed.
PRESLEY PENDERGRASS; Most Likely
to Succeed.



DICKEY DOREMUS; Most Athletic.
BETTY KEEBLE; Prettiest, Most Popular.
ARCHIE BARCLAY; Most Popular.



LINA HOLDER; Friendliest.
B. G. HICKS; Friendliest.



PAT BATES; Wittiest.
BOBBY CARTER; Wittiest.

Last

Will and Testament

We the Senior Class of 1953, Jackson County High School, Scottsboro, Alabama, being of sound bodies and partially whole minds declare this to be our last Will and Testament.

To the faculty, we bequeath our gratitude and appreciation for their patience, kindness, and understanding.

To Mr. Couch, we leave our sincere thanks for his leadership, and having faithfully stood by us for these last six years in our high school education.

To the Juniors, we leave our title of "Dignified Seniors", our front seats in assembly, and one by one the following:

We, Ruth Allison and Pat Harper, will to Pauline Latham our loud mouths.

I, Bobby Payne, leave part of my good looks and my sincerity to Billy Gene Culpepper.

I, Mary Dell Swaim, will my success in all I undertake to do to Sherry Martin.

We, Pat Bates and Charlotte Dilbeck and Jane Ferguson, leave our giggles to Jane Hodge and Joyce Irving.

We, Jack Phillips and Roy Ambrester will to W. C. Walker our barbells.

We, Dickey Doremus and Johnsie Thomas, bequeath our athletic ability to James

Huber and Dan Haynes.

I, James Rounsvall, will try to leave a few feet of my height to Hugh Hancock and J. B. Lusk.

I, Buster White, leave my love to Jean Dawson.

I, Bobby Kennamer, bequeath my friendliness and salesmanship ability to Wiley Finney.

I, Ray Brown, will to James Keller my chewing gum, which will be found in the fourth row in the lab.

I, Bobby Boozer leave my title of "Teller of Tall Tales" to David Matthews and Wannie Lester.

We, Jackie Hamilton and Mary Grace Pace, bequeath our southern drawl to Edwin Britt, Wilma Hilly, and Mildred Stewart.

We, Mary Frances Millican, Wanda Traylor, Ailine Knight, and Roy Reed, will our quietness to Faye Carter, Ray Smith, Carolyn Downey, and Rachel Evett.

We, Jane Ellis Hodges and Annie Ruth Selby, leave our ever-full arms of books to Christine Reed and Imogene Hancock.

I, B. G. Hicks, will my singing to Sam Fred Gross.

I, Ann Maples, will my ever flowing A's to Shirley Jenkins.

We, Bobby Carter, Rodney Bell, and Hershel Moore, leave our art of driving teachers wild to Ollie Crawford.

We, Shirley Carter and Cleaburn Chrisman, leave our inseparableness to any two members of the Junior Class who can live up to the requirements.

We, Joann Moore, Hazel Welborn, and Willodean Pope, leave our never ceasing jokes to Elizabeth Porter, Betty Faye Cotten and Richard Southern.

We, Margaret Dickerson and Addie Ruth Lackey, will our optimism to Rudolph Allen, Betty Jo Dolberry, and Mary Nell Ivy.

We, Dorthan Black, Jimmy Russell, Shirley Headrick, and Jane Riley, will to Louise Holloway and Ann Barbee our studious nature.

I, Thomas Henderson, bequeath my good nature to Carolyn Gilliam.

We, Sue Holland, Carolyn Gist, and Virginia Carter, will our ability to catch a man to Carolyn Sentell and Sue Allen.

We, Tommy McCutchen and Billy Max Hale leave to Billy Charles Perry our way with the women.

We, Betty Ray, Joyce Lemons, Mary Frances Wilkinson, bequeath our neatness to Louise Cline, Betty Rose Berry, Ella Jean Jones, and Betty Dudley.

We, Ruth Hilly and Betty Faye Britt, will our everlasting friendship to Frances Caperton and Barbara Glass.

I, Lina Holder, bequeath my friendliness to Myrtle Guffey and Aubry Pockrus.

I, Presley Pendergrass, will my dignity to William Dean.

I, Elizabeth Hall, leave part of my beauty to Mary F. Proctor.

We, Shirley Crawford and Bonnie Sue Ashmore, bequeath our pleasant dispositions to Wanda Griffin and James McKenzie.

We, Louise Benefield, Mildred Holloway, Joyce Bryant, Margaret Bradford, and Fannie Ruth Wilkerson, leave our sweetness to Mozelle Winger, Shelby Brogdon, and Jane Wilhelm.

We, Lucinda Winger and Joyce Davis will our helpful ways to Sally Sanders and Sue McLaughlin.

We, Louise Pace, Fruzanne Strawn, Eugene Rogers, and Mildred Proctor, will our politeness to Alfred Bellomy, Elizabeth Beard and Marie Campbell.

I, Gary Sizemore, will my interest in radio announcing to Charles Smith.

I, Bill Arnold, leave my deep voice to Charles Robertson.

We, Sheila Blansit, Mary Daisy Talkington, and Geneva Smith, will part of our height to Elizabeth Pittman and Glen Pendergrass.

We, Mazell Dukes, Bobbie A. Talley, and Hazel Swearingin, bequeath our winning smile to Jimmy Cook, Flora Matthews, and Barbara Sparks.

We, Billy Ray James and Walter Carl Pickett, will our interest in agriculture to Robert Blizzard, Johnny Shavers, and Wayne Shelton.

We, Betty Keeble and Barbara Kent, will our flawless complexion to Barbara Sparks and Mary Ruth Coffee.

We, Bill Caperton, Wannie Evans, and Dean Gentle, leave our back seats in class to Paul McCarver and Joy Paradise.

We, Gene Stewart, Jeanette Dean, Brastell Matthews, Jewell Thomas, and Woody Hamilton, leave our slow and easy going manners to Donald Gibson, Joyce Johnson, Charles Stewart, and Dorothy Neeley.

I, Jimmy Ruth Yancy, Joy James, and Erlene Sisk, will my rushing around to Joyce Anderson, Joann Matthews, and Gayla Fosset.

I, Carolyn Lewis, will to Shirley Sargeant my cuteness.

I, Winfred Stewart, will my car horn to Lindsay Vaught.

We, Teddy Hugh Patterson and Fred Southerland, bequeath our innocent stare to Barbara Womack and Bonnie Wade.

I, Paul Brandon, will my reading of comic books in class to James Woosley.

I, Dee Chandler, leave my ability to run a movie projector to Charles Arnold.

I, Johnny Campbell, will my wit to Condon Campbell.

I, Raymond Nix, will my ability to play basketball to Olen Holcomb, Eugene Knight, and Morris Jones.

We, Mary Lisbeth Jones, Janet Conley, and Archie Barclay, bequeath our love for a good time to Kathryn Webb, Frances Gold, and Dale Trammel.

I, Audie Jo Deerman, will my never ceasing babble to Joyce Hodges.

We, Aubrey Lee Outlaw and Robert Michaels will our bright remarks in class to Marvin Miller and Vernon Hoge.

I, Maloy Murphee, will my energetic ways to Eloise Paradise and Jimmie Williams.

I, Addie Ruth West, bequeath my hope for a glee club party to Janette Stone.

We, Winola McCutchen, Charlotte Mewborn, and Mary Lou Whitehead, leave our bashfulness to Helen Orange, Kenneth Welch, and Billy Marie Roberts.

CAMPBELL, JOHNNY, MEMOIRS

COPYRIGHT, 1970 BY THE JACKSON COUNTY HIGH SCHOOL
PUBLISHING COMPANY

Excerpt:

"After receiving an invitation, on May 19, 1968, from my old schoolmate, Rev. Presley Pendergrass, two days later I started for Scottsboro. About twenty miles from town, I tuned my radio to W C R I and recognized the voice of Gary Sizemore announcing the program of the day.

Just at the city limits, the motor started missing. In the first garage, who should I find as head mechanic but James Rounsavall.

Scottsboro was completely changed. I noticed the Silver Fox Theater, owned and managed by Roy Reed and Dee Chandler; White Drugs, owned by Charles White; and Carter's Construction Co., owned by Bobby Carter. Engineers working there were Bobby Boozer, Ray Brown, Wannie Evans, Bill Caperton, and Fred Southerland.

The newest addition to Scottsboro was the newspaper, The Daily Gossip, run by women. The staff consisted of editor-in-chief, Ruth Allison; associate editors, Jane Ferguson and Joy James; business manager, Jimmy Ruth Yancy; typists, Audie Jo Deerman, Margaret Dickerson, Addie Ruth West; reporters, Margaret Bradford, Shirley Crawford, Mazelle Dukes, and Mildred Proctor. With this paper in circulation, the women of Scottsboro knew the latest without having to lean over the backyard fence.

At lunchtime I stopped in at Woody Hamilton's restaurant, and was served by Hazel Swearingin, who told me that Barbara Kent, Carolyn Gist, Carolyn Lewis, Shirley Carter, Patricia Bates, Louise Benefield, Bettye Keeble, and Virginia Carter had married during the time I had been away. Archie Barclay was in command of the local National Guard. Gene Stewart had become band director of J. C. H. S. Cleburn Chrisman was pitching for the "Birmingham Barons".

When I arrived at Presley's study, he was having a church meeting. Among those present were Rev. Jack Phillips; Rev. Roy Ambrester; and Jane Riley, choir director.

Later Presley and I talked about our classmates of '53. Ann Maples had recently been elected United States Senator. Tommy McCutchen and Rodney Bell had opened a resort at Lake View. Mary Elisabeth Jones and Janet Conley were interior decorators. Bobby Payne had become a surgeon at the new hospital, his nurses being Fannie Ruth Wilkinson and Charlotte Mewborn. Fire chief Johnsie Thomas, with his firemen, Billy Max Hale, Thomas Henderson, Brastel Matthews, Teddy Hugh Patterson, Billy Ray James, and Eugene Rogers, was doing a great job at controlling fires in Scottsboro.

The next day, I visited dear old J. C. H. S. and could hardly believe my eyes. The building was completely changed. It was three stories high and covered an acre of ground. Inside I found extra wide halls with lockers built into the walls.

Principal Bobby Kennamer greeted me in the office. He told his secretary, Bettye Ray, that he would show me around. As we went from room to room, I recognized many of the teachers. B. G. Hicks, Jimmy Russell, and Jewell Thomas were teachers of science, chemistry, and physics. Dorthan Black was teaching plane geometry and algebra. Among the teachers of languages were Mary Dell Swaim, English; Mary Frances Millican, Spanish; and Sue Holland, French. Louise Pace was teaching democracy. Jo Ann Moore was in charge of the home economics department. Charlotte Dilbeck and Patricia Harper were the physical education instructors. In the music department, Jane Hodges was doing a remarkable job. Bobbie Ann Talley, Jackie Hamilton, and Lina Holder were Junior III teachers. The coaches were Robert Michaels, football; Raymond Nix, basketball; and Dickey Doremus, track.

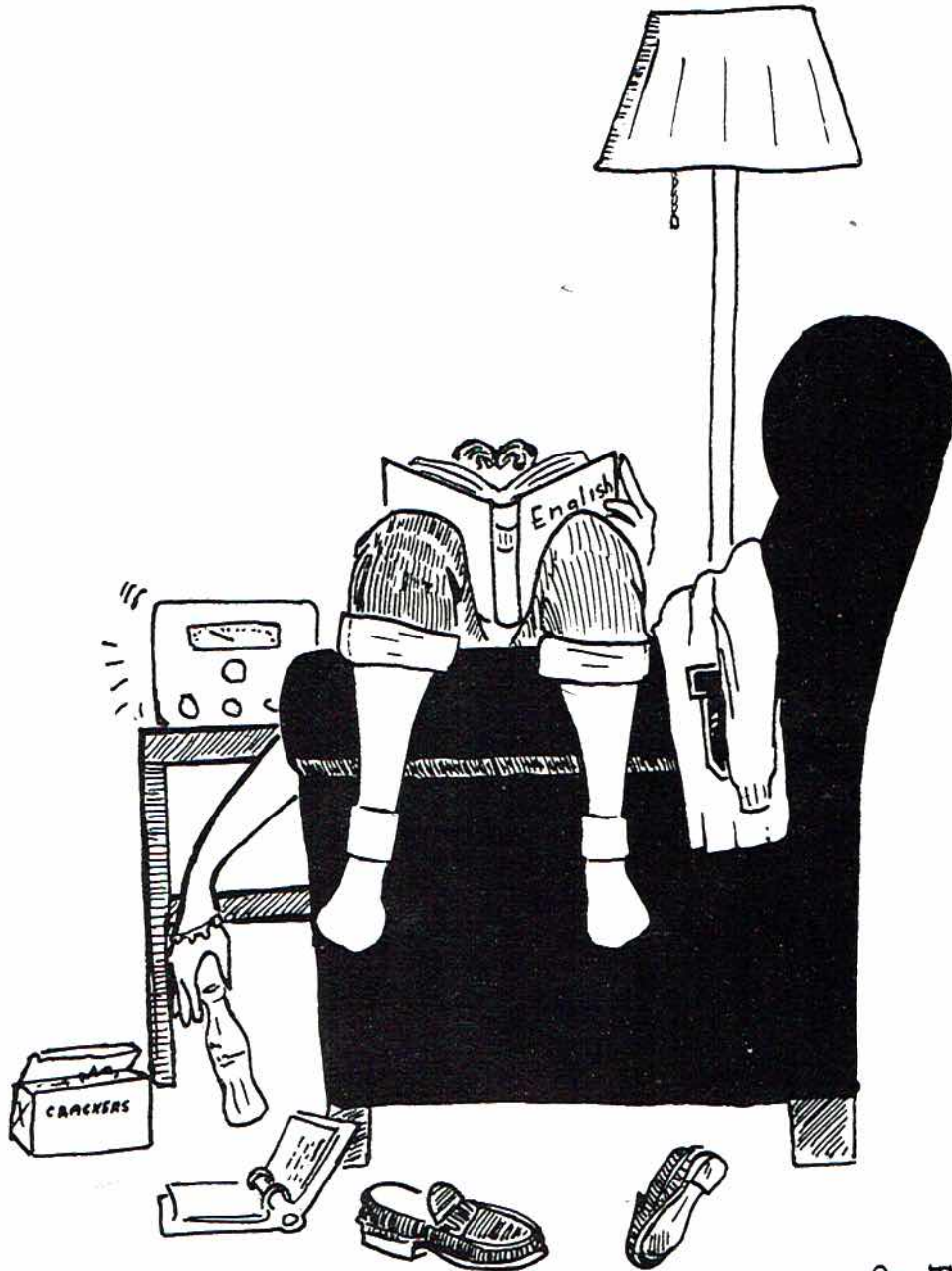
That afternoon in town, I saw Sheriff Walter Carl Pickett and his deputies, Audrey Lee Outlaw and Bill Arnold. While I was talking to them, Paul Brandon and Dean Gentle, two state highway patrolmen, drove by.

Visiting the larger firms of Scottsboro, I found that most of the girls of the class of '53 were doing clerical work. The bookkeepers included Elizabeth Hall, Bettye Faye Britt, Joyce Davis, Mary Grace Pace, Geneva Smith, Lucinda Winger, Shirley Headrick, Jeanette Dean, Bonnie Sue Ashmore, and Mildred Holloway. The stenographers and secretaries were Shelia Blansit, Addie Ruth Lackey, Winola McCutchen, Ailene Knight, Wanda Traylor, Annie Ruth Selby, Erline Sisk, Joyce Bryant, Joyce Lemons, Fruzanne Strawn, and Ruth Hilley.

Presley told me that a few of our classmates had made a career of the different services. Walter Moore and Maloy Murphree had chosen the Navy; Herchell Moore, the Army; and Winfred Stewart, the Marines. Mary Frances Wilkinson and Willodean Pope were in the WAC's. Mary Lou Whitehead and Hazel Welborn were in the WAF's.

Leaving the next morning, I stopped and took one more look at Scottsboro. I hope to come back someday. "

SENIOR II



Ann Maples.

OFFICERS



Bill Riley
 Frances Roach
 Mildred Roberts
 Marilyn Ryan

President	Dale Trammel
Vice President.	Condon Campbell
Secretary	Carolyn Gilliam
Treasurer	Sherry Martin

FAVORITES



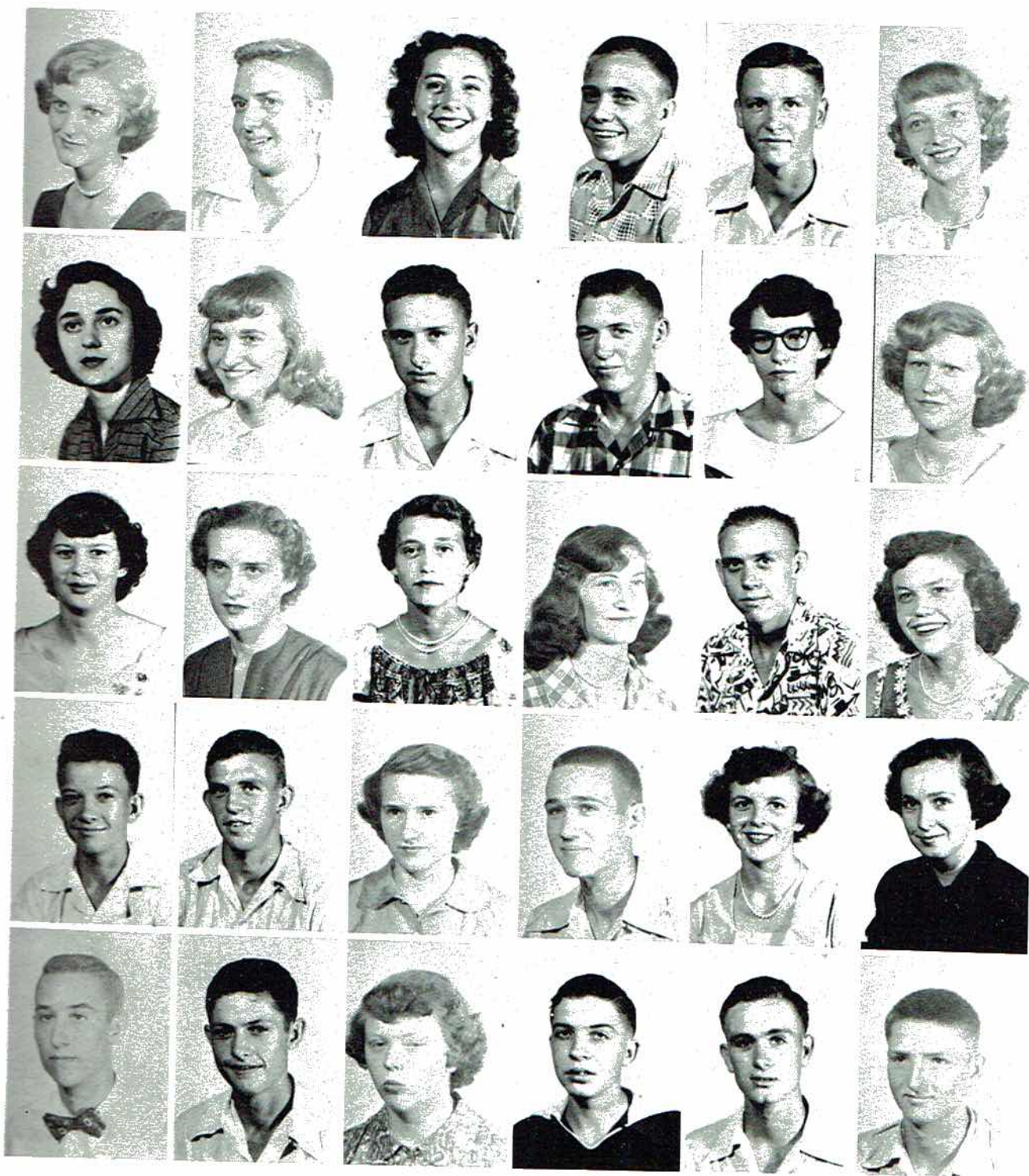
Joyce Irving
 William Dean



FIRST
 SECOND
 THIRD
 FOURTH
 FIFTH



FIRST ROW, LEFT TO RIGHT: Rudolph Allen, Sue Allen, Joyce Anderson, Charles Arnold, Betty Jo Ball, Ann Barbee.
 SECOND ROW: Elizabeth Beard, Alfred Bellomy, Betty Berry, Edwin Britt, Shelby Brogden, Condon Campbell.
 THIRD ROW: Frances Caperton, Faye Carter, Louise Cline, Jimmy Cook, Betty Cotton, Ollie Crawford.
 FOURTH ROW: Jean Dawson, William Dean, Betty Dolberry, Carolyn Downey, Betty Dudley, Elizabeth Dudley.
 FIFTH ROW: Rachel Evett, Wiley Finney, Gayla Fosset, Carolyn Gilliam, Barbara Glass, Frances Gold.



FIRST ROW, LEFT TO RIGHT: Wanda Griffin, Sam Fred Gross, Myrtle Guffey, Hugh Hancock, Dan Haynes, Wilma Hilley.
 SECOND ROW: Jane Hodge, Joyce Hodges, Vernon Hoge, Olen Holcomb, Louise Hollaway, Mary Nell Ivey.
 THIRD ROW: Joyce Irving, Shirley Jenkins, Joyce Johnson, Ella Jean Jones, James Keller, Pauline Latham.
 FOURTH ROW: Wannie Lester, J. B. Lusk, Sherry Martin, David Matthews, Flora Matthews, Joan Matthews.
 FIFTH ROW: Paul McCarver, James McKenzie, Sue McLaughlin, Joy Paradise, Glendon Pendergrass, Billy Charles Perry.



FIRST ROW, LEFT TO RIGHT: Elizabeth Pittman, Aubrey Pockrus, Elizabeth Porter, Mary Frances Proctor, Christine Reed, Billie Marie Roberts.

SECOND ROW: Louise Roberts, Charles Robertson, Shirley Sargent, Sallie Sanders, Carolyn Sentell, Barbara Sue Sparks.

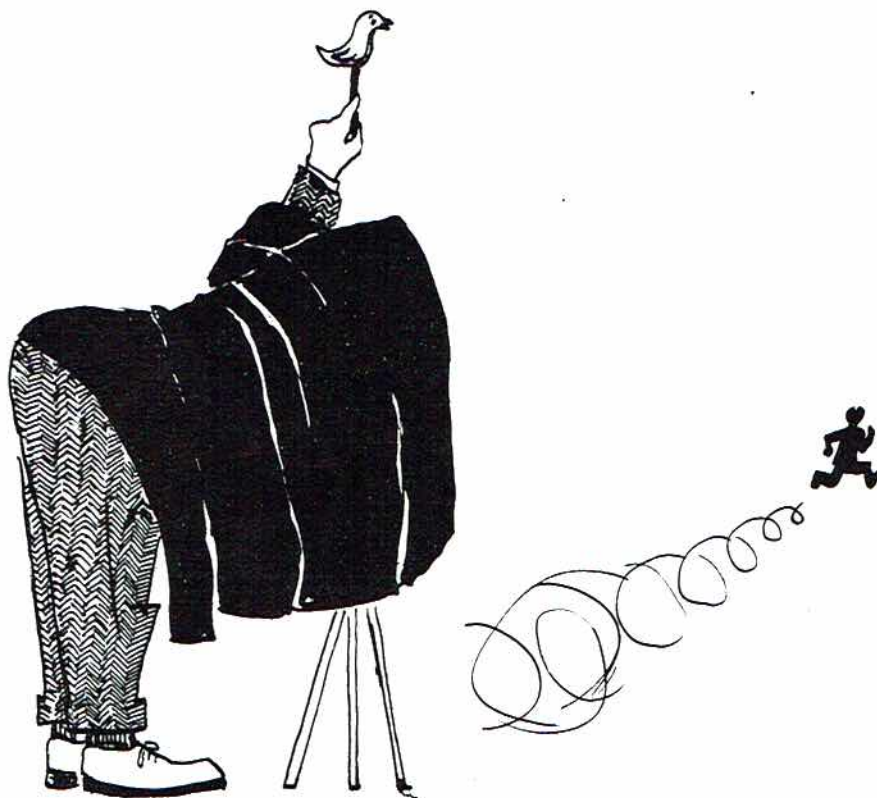
THIRD ROW: W. C. Sparks, Jimmy Spear, Charles Smith, Ray Smith, Charles Stewart, Mildred Stewart.

FOURTH ROW: Jeanette Stoner, Ila Talley, Norma Teague, Dale Trammel, Lindsay Vaught, Kathryn Webb.

FIFTH ROW: Kenneth Welch, Jane Wilhelm, Jimmie Williams, Barbara Womack, James Woosley, James Huber.

Camera Shy

Robert Blizzard, Mary Ruth Coffey, Billy Gene Culpepper, Donald Gibson, Dan Haynes, Morris Jones, Eugene Knight, Marvin Miller, Dorothy Kneely, Eloise Paradise, Ray Smith, Johnny Shavers, Wayne Shelton, Richard Southerd, Henry Sparkman, Bonnie Wade, W. C. Walker, Donald Wilbourn, Mozell Winger, Helen Orange.



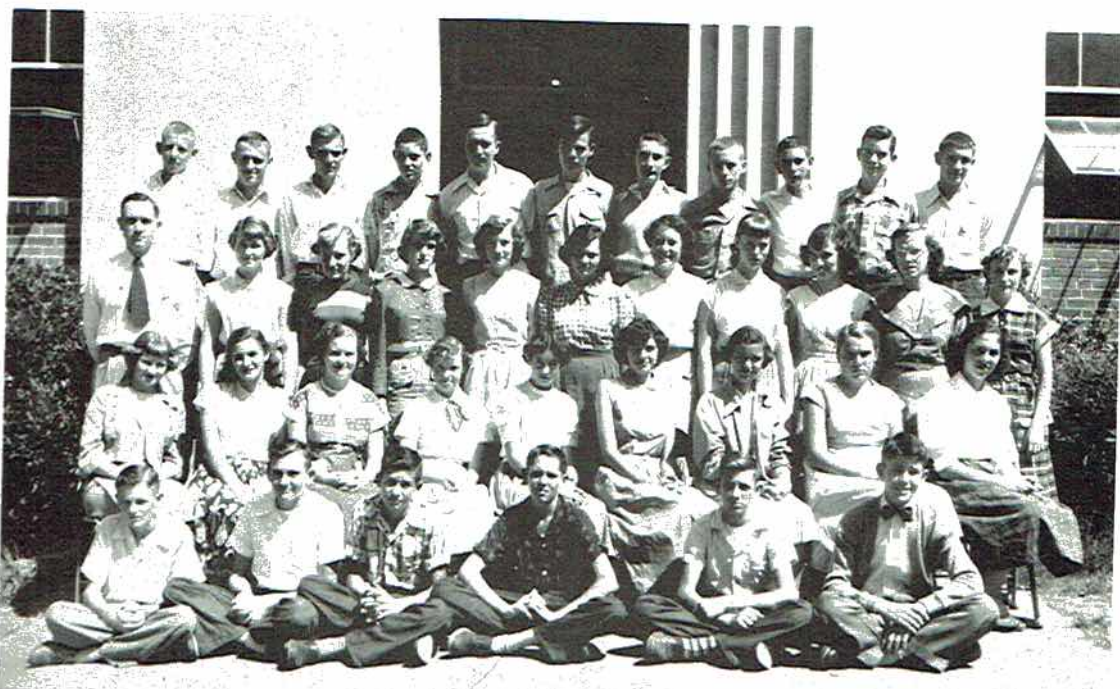


Ann
TTapes



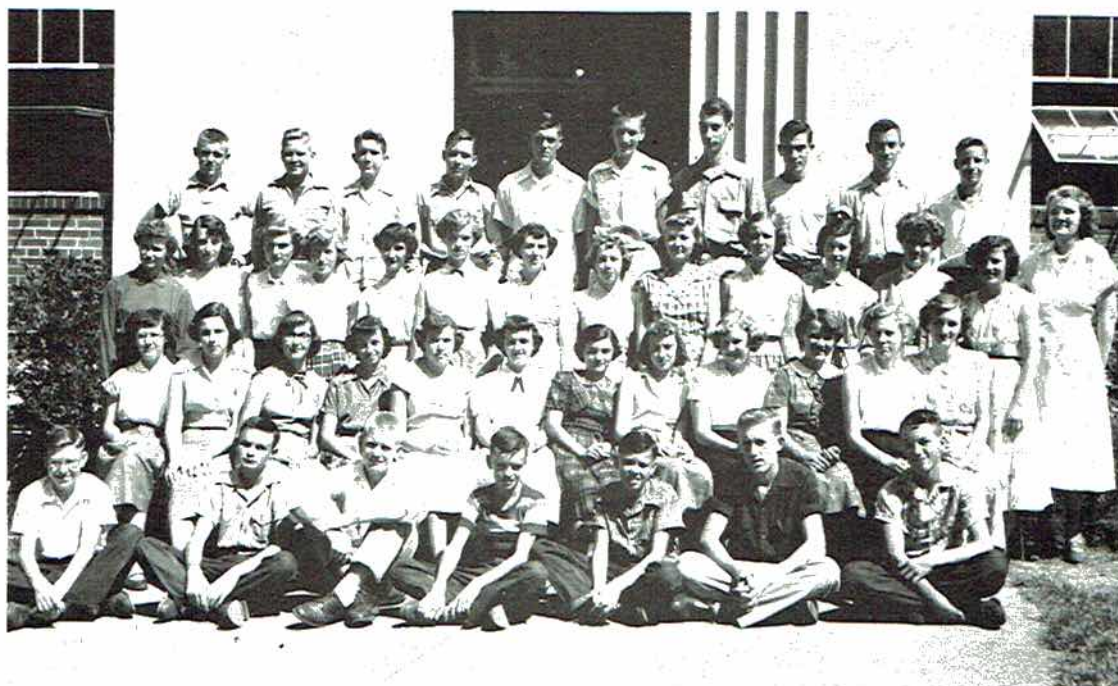
MRS. ARMSTRONG--SR. I

FIRST ROW--LEFT TO RIGHT: B. Riley; P. Holcomb; W. Britt; G. Frazier; J. Hall; H. Carter; B. Goff; H. Bradford. SECOND ROW: S. Baugh; S. Beard; R. Nevils; S. McCutchen; C. Green; B. Berry; S. D. Harper; L. Woens; J. Matthews; M. Ryan; L. Foster; B. Thompson; R. Smart. THIRD ROW: Mrs. Armstrong; W. Ivey; J. Manning; R. Nichols; C. Winger; D. Duke; M. Parker; L. Outlaw; B. Matthews; B. Paradise; B. D. Allen; M. S. Hester; H. Bellomy. FOURTH ROW: K. Johnston; E. Arnold; A. Beard; E. Sisk; C. Jacobs; R. Westmoreland; D. Lackey; W. Lingerfelt; J. Swearingin; T. Killian; G. Johnson; B. Dukes.



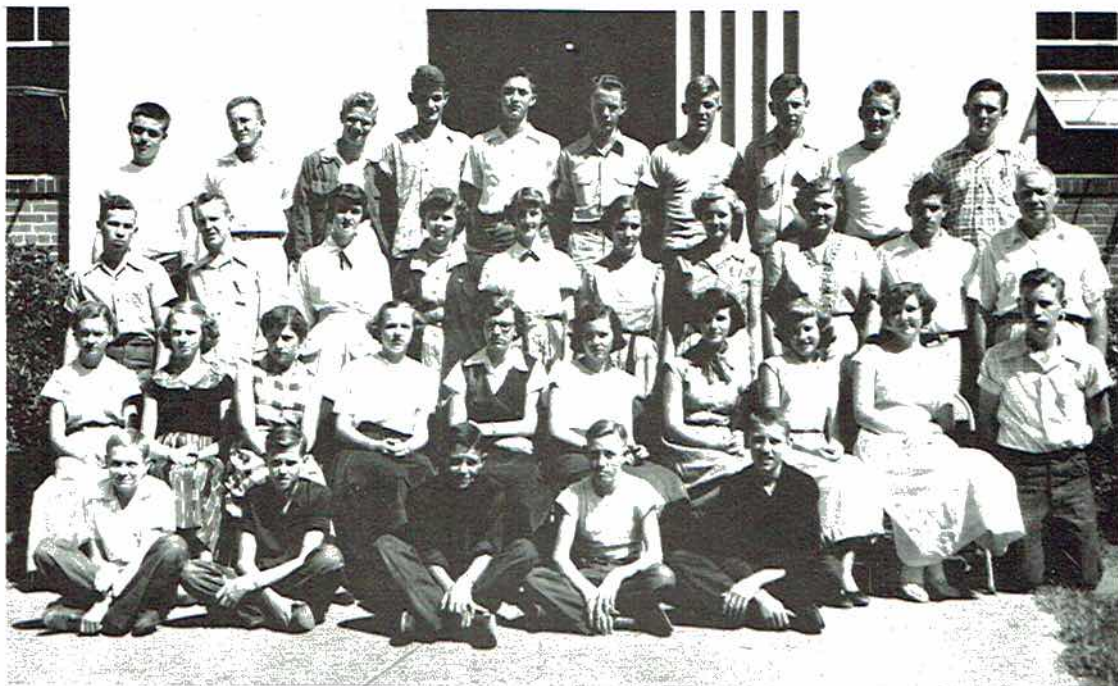
MR. PAGE--SR. I

FIRST ROW--LEFT TO RIGHT: L. Germany; D. Walden; S. Smart; B. James; J. Middleton; P. Swaim. SECOND ROW: M. Jenkins; P. Goolesby; B. J. Reed; D. Haynes; J. Staten; J. Baty; D. Pickel; B. Keasling; J. Thomas. THIRD ROW: Mr. Page; R. Christa; D. Hastings; M. Dean; M. Lusk; M. Swinford; D. Precise; G. Hamilton; F. Roach; J. Sebring; N. Hamilton. FOURTH ROW: B. Keller; S. Ray; G. Hastings; R. Edwards; R. Young; C. King; D. Ashmore; S. Harper; B. Gant; B. Myers; J. Arnold.



MISS PORTER--SR. I

FIRST ROW--LEFT TO RIGHT: B. Shook; J. Beam; W. Jones; E. Shelton; L. McCutchen; J. Bryant; J. Davis.
 SECOND ROW: A. Wilkerson; J. Mann; G. McCutchen; M. Thomas; H. Bellomy; L. Henshaw; J. Gross; L. Snoddy; W. Green; V. Beard; E. Rounsvall; J. Stewart. THIRD ROW: G. Loyd; S. Brandon; C. Blackwell; B. Knopps; D. Crawford; B. Welch; R. Precise; P. Hall; M. Keeton; M. Bynum; J. Myers; J. Morrow; G. Mount; Miss Porter. FOURTH ROW: G. Glass; J. Bray; J. Brown; J. Luttrell; G. Bray; B. Kirby; W. Bentley; G. Gray; B. Precise; G. Dodson.



MR. PHILLIPS--SR. I

FIRST ROW--LEFT TO RIGHT: R. Johnston; D. Womack; W. Reed; A. Pace; K. Chandler. SECOND ROW: B. A. Smith; G. Berry; J. Jeffery; S. Campbell; B. J. Garner; J. Henderson; M. Whitaker; M. E. Shirey; M. L. Stone; G. Wooden. THIRD ROW: F. Ake; C. Miller; B. J. Gann; S. Watson; J. Staton; M. Roberts; S. Grass; C. Brazelton; C. Hass; Mr. Phillips. FOURTH ROW: E. Johnson; R. Gross; F. Evett; A. Brannon; C. Sharp; B. Mitchel; C. Payne; R. E. Rogers; L. D. Garner; W. Wilburn.

JANE STATON
Senior One



CHARLEY PAY
Senior One



NINA JO WANN
Junior Three



HUGH STEWART
Junior Three



BARBARA COUCH
Junior Two



BOBBY DAVIS
Junior Two



BETH LUSK
Junior One



PAT TRAMMEL
Junior One



JUNIOR HIGH



Junior III



MRS. JONES--JR. III

FIRST ROW--LEFT TO RIGHT: G. Goolsby; H. Stewart; T. Dean; J. Campbell; T. Hodges; J. Baker; C. Robertson. SECOND ROW: H. Bates; L. Hall; D. Gentle; V. Jones; G. Sisk; M. Schultz; S. Yarbrough; H. Howard; C. Hayes; J. Barclay. THIRD ROW: J. Lewis; J. A. Vaught; V. Brandon; S. Word; G. James; J. A. Kennamer; B. S. Hastings; B. J. Chandler; E. Campbell; Mrs. Jones. FOURTH ROW: G. Stone; M. Weeks; B. Howland; J. Adams; W. Parks; R. Skelton; J. D. Snodgrass; W. Sims.



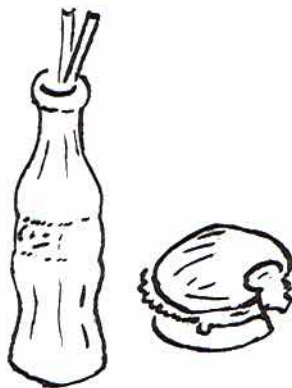
MR. SLOAN--JR. III

FIRST ROW--LEFT TO RIGHT: E. Talley; J. D. Bradford; C. E. Ferguson. SECOND ROW: P. Wright; H. R. Russell; M. Selby; K. Womack; S. Hoge; N. L. Gross; R. F. Phillips. THIRD ROW: B. Leiby; L. Hall; B. Snyder; B. K. James; R. Shelton; F. Talkington; B. Porter; G. Clemens; Mr. Sloan. FOURTH ROW: B. H. Holcomb; K. Southead; R. Downs; M. Brandon; J. C. Hall; B. F. Swearengin; B. J. Proctor; B. F. Dawson; P. Allen.



MRS. HICKS--JR. III

FIRST ROW-LEFT TO RIGHT: L. Cody; D. Jacobs; F. Tubbs; B. York; T. Kirby; J. Bolding; B. J. Haynes; N. Lusk. SECOND ROW: B. Watson; M. L. Bradford; F. Fowler; B. M. Miller; E. McClure; L. McKee; A. P. Shelton; L. Davis; E. Moore; C. Killian; N. J. Wann. THIRD ROW: S. Allen; P. Chambers; T. R. Hubbard; M. Wallace; B. J. Isbell; N. McAbee; B. Allen; J. Bellomy; M. A. Smith; Miss Powell. FOURTH ROW: J. Beard; M. Brannon; B. Miller; J. Rogers; J. Winger; E. Evans; S. Macher; R. Johnson. NOT PICTURED: R. Short.

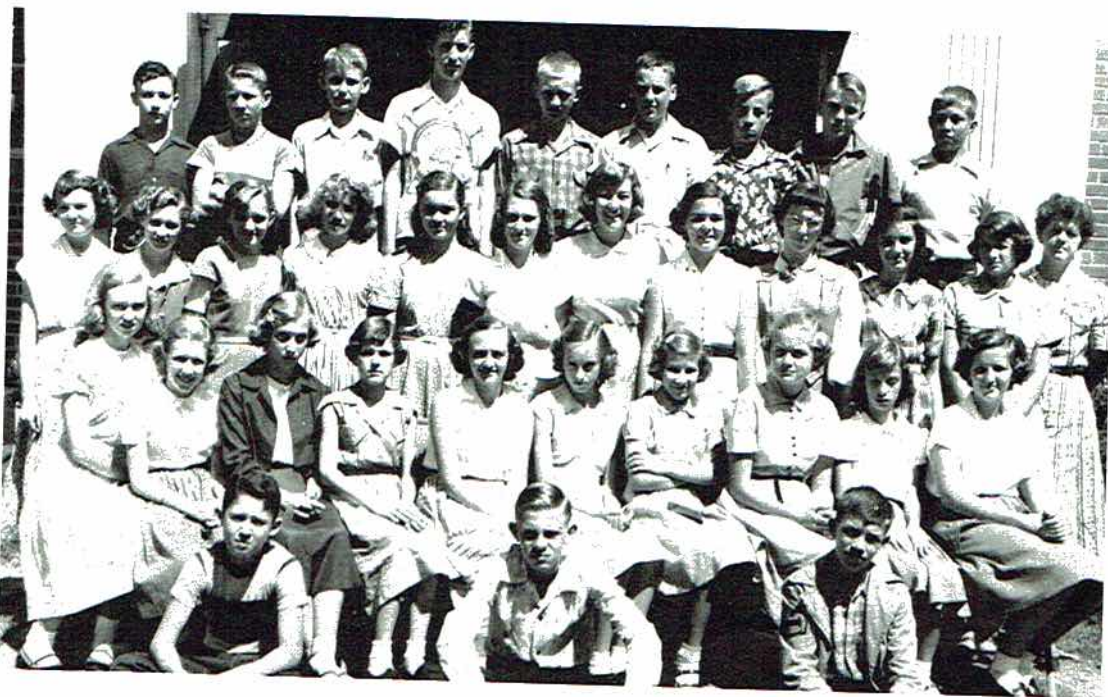


Junior



MR. BATES

FIRST ROW—LEFT TO RIGHT: V. Bellomy; R. McLaughlin; D. Campbell; W. Latham; H. Childress; R. McLaughlin; C. Hancock. SECOND ROW: S. Campbell; E. Nevils; L. Southead; F. Heal; C. Dobbins; B. J. Miller; E. Paris; B. Allen; M. Thompson. THIRD ROW: R. Walden; M. Potter; S. West; M. Weeks; M. Hancock; L. Ashmore; G. Sumner; P. Bryant; Mr. Bates. FOURTH ROW: G. DeJson; F. Sanders; B. D. King; B. Bradford; E. Smith; D. Fowler; J. McCoy; M. A. Miller,



MISS FINNEY

FIRST ROW: LEFT TO RIGHT: A. Gardner, Jr.; J. Cunningham; S. Schmoller. SECOND ROW: O. Lackey; N. Tally; K. Kennamer; M. Barbee; P. Snoddy; F. DeArmand; J. A. Clemens; A. Arendale; N. George; K. Hodges. THIRD ROW: B. Dollberry; A. Sharp; L. Sebring; V. Elliott; L. Bellomy; E. Oneal; B. Couch; P. Proctor; D. Beddingfield; A. McCord; C. Campbell. FOURTH ROW: B. Stewart; P. Boykin; B. Keeble; J. Wilkins; B. Sanders; B. Hodges; R. Gentles; B. Jones; B. Davis.



MRS. VAUGHT

FIRST ROW-LEFT TO RIGHT: W. Nix; H. Tanner; J. Evans; B. J. Farmer. SECOND ROW: S. McCoy; C. Dunn; M. Arnold; R. McCoy; A. Potter; P. Whitehead; B. Benson; B. Treece. THIRD ROW: Mrs. Vaught; J. Dean; Q. Paradise; N. Shelton; G. Bearden; D. Kennamer; A. James; B. Porter. FOURTH ROW: N. McBride; D. McGee; R. Bradford; J. Brandon; L. Mitchell; L. Evans; C. Necklaus; V. Hodges. NOT PICTURED: A. Hess.



MRS. LEE

FIRST ROW-LEFT TO RIGHT: T. Hastings; E. Tubbs; G. Reed; H. Hall; V. Arnold; H. Anderson. SECOND ROW: S. Smith; J. Paradise; M. Hall; H. Wright; C. Selvage; L. Woosley; P. Rodgers; K. Wilkerson; R. N. Reed; S. Allen. THIRD ROW: Mrs. Lee; J. Keel; L. Hastings; B. Wheeler; B. R. Smith; M. Berry; E. M. Westmoreland; J. Allen; M. J. Swaim; B. G. Loyd. FOURTH ROW: M. Belew; B. Bulman; P. Wann; F. Goodowens; B. Tanner; A. Potter; D. Lovell; G. Hastings; S. Lusk.

Junior



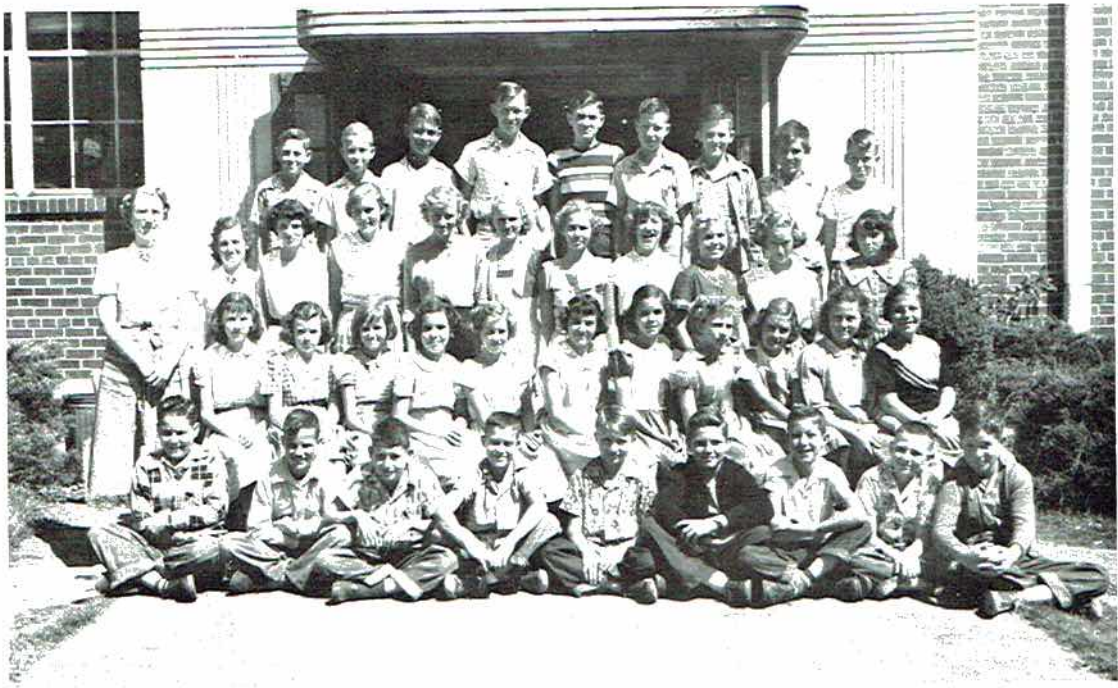
MRS. McCRARY

FIRST ROW: C. Oneal; A. W. Chandler; F. W. Davis; W. Baker; J. Hancock; G. Thomas; B. Cobb. SECOND ROW: P. McCampbell; J. Treece; J. Paradise; M. Mount; M. J. Arnold; M. Selvage; M. J. Allen; L. Hancock; M. Bradford; V. Wright. THIRD ROW: Mrs. McCrary; J. A. Evans; N. King; P. A. Linger; W. Sisk; J. Campbell; M. Oneal; B. Phillips; M. A. Linger; L. E. Selby; J. Wright; A. Potter. FOURTH ROW: W. Stultz; W. Whitehead; S. Talley; W. Ibray; J. Woodall; T. Mitchell; R. Hendrix; H. Precise; B. Ott.



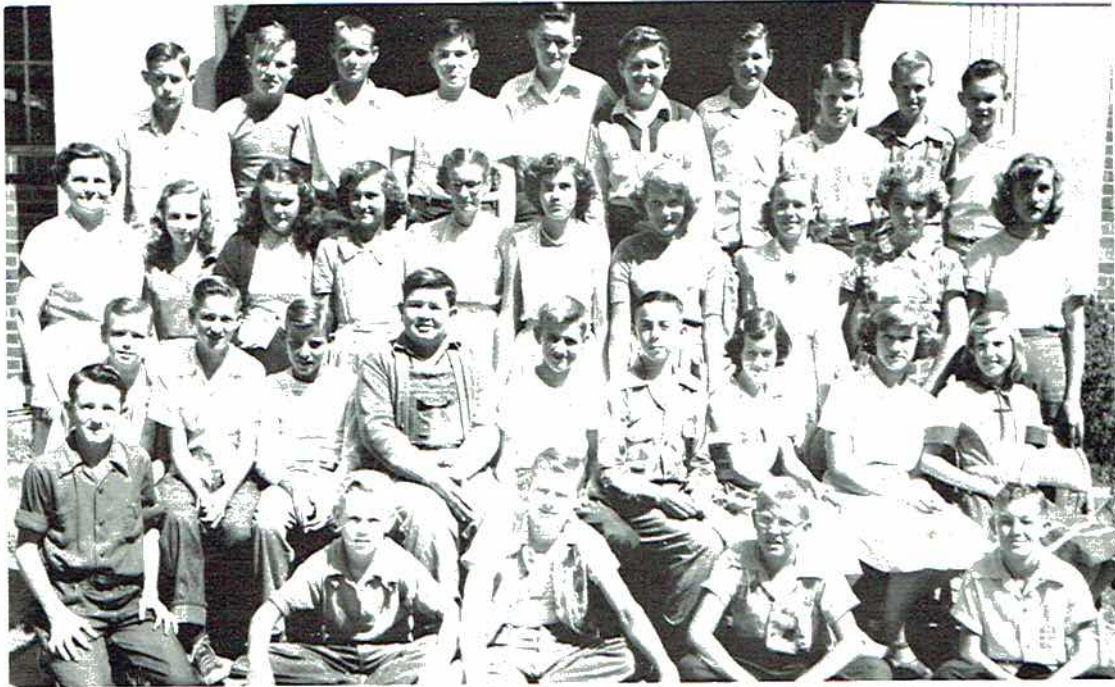
MISS STOCKTON

FIRST ROW, LEFT TO RIGHT: D. Skelton; J. Hodges; F. Scott; B. Boles; C. Wann; C. E. Beard; J. B. Goodowens; A. Hastings; L. Letson. SECOND ROW: F. Luttrell; B. Smith; B. Pace; M. L. Ambrester; J. Cunningham; M. Evans; B. J. McKee; S. Sizemore; D. Finney; J. Hollis; B. Lusk. THIRD ROW: R. McCoy; M. S. Evans; J. Muse; M. Tate; R. Bogue; B. Gilliam; A. Cloud; J. Smith; C. Ashmore; T. Haynes; P. Hodge; Miss Stockton. FOURTH ROW: F. Wallingsford; J. E. Cline; B. Rodgers; D. Webb; J. Turner; B. Kennamer; P. Trammel; C. Webb; M. Latham; G. Payne; O. M. Etheridge.



MISS WEST

FIRST ROW-LEFT TO RIGHT: W. Hamm; B. J. Ward; T. Sisk; W. Allison; F. Roberts; L. Tipton; D. Hethcoat; J. L. Bulman; E. Alkins; SECOND ROW: M. Sloan; B. A. Ledbetter; J. Watson; B. F. Berry; J. Judge; N. R. Judge; M. C. Hodges; A. Wales; L. J. Newell; D. Kirkland; M. Murphy. THIRD ROW: Miss West; R. Freeman; E. M. Chrisman; M. Sumner; P. Manning; V. Westmoreland; J. Keel; F. Vincent; C. Westmoreland; M. S. Farr; W. Latham. FOURTH ROW: W. H. Precise; B. Guthrie; K. Marbut; E. Manning; B. R. Smart; D. Hall; R. Green; D. Fowler; J. King.



MRS. HODGES

FIRST ROW-LEFT TO RIGHT: S. Brandon; B. C. Ward; K. Adcock; K. Hall; B. Mount. SECOND ROW: H. Downs; J. E. Hammer; L. Hollis; L. W. Manning; J. Cunningham; J. N. Bearden; B. Thomas; M. Keith. THIRD ROW: Mrs. Hodges; C. Southern; S. Hancock; G. Guffey; M. S. Pace; G. Lemons; B. Owens; J. Shelton; C. Cosby; L. Pruitt. FOURTH ROW: T. Moor; C. Willmon; B. Evett; P. S. Hall; L. G. Lusk; R. J. Rudder; J. C. Bell; J. Alinger; R. Bell; J. B. Venable. 43



7th GRADE OFFICERS

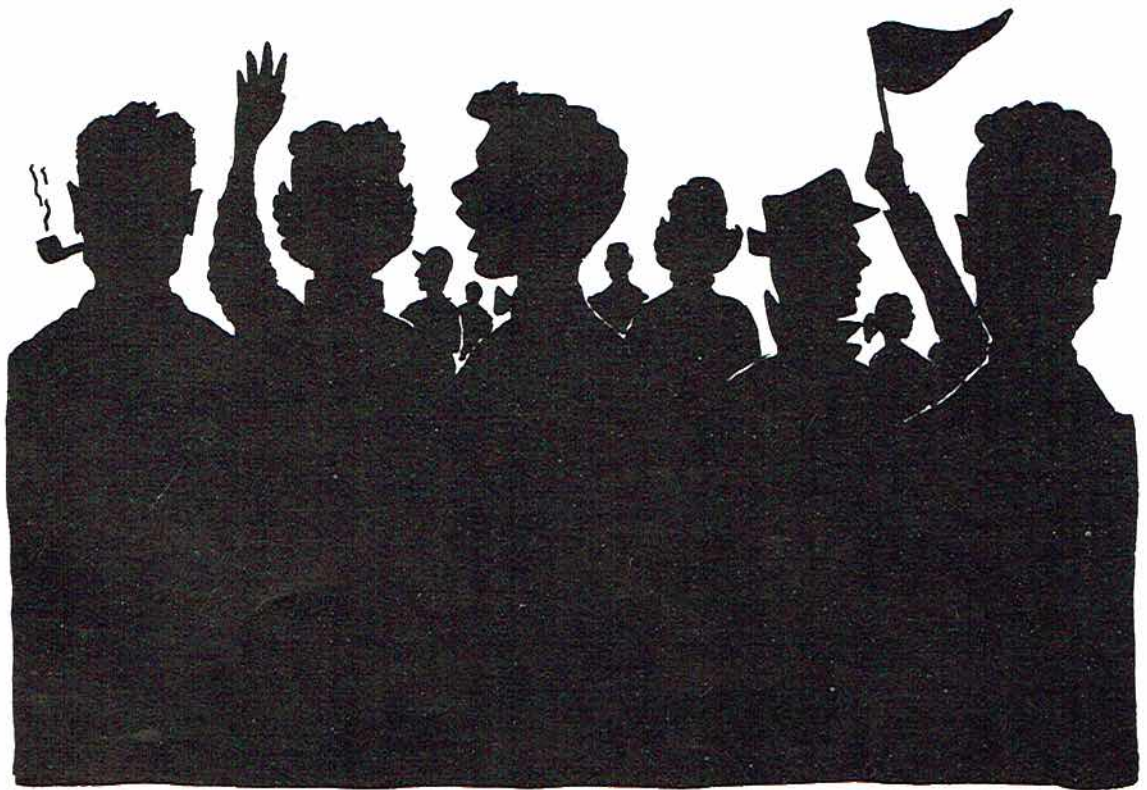
FIRST ROW, L. TO R.: J. Keel, C. Arnold, A. Wales, M. Hodges, P. Olinger, A. Cloud,
 SECOND ROW, L. TO R.: A. Hasting, W. Latham, C. Cosby, T. Haynes, Q. Muse, B. McKee,
 P. Hodge, M. Ambrester
 THIRD ROW, L. TO R.: J. Cunningham, B. Rogers, J. Rudder, L. Hollis, P. Trammell, W.
 Chandler



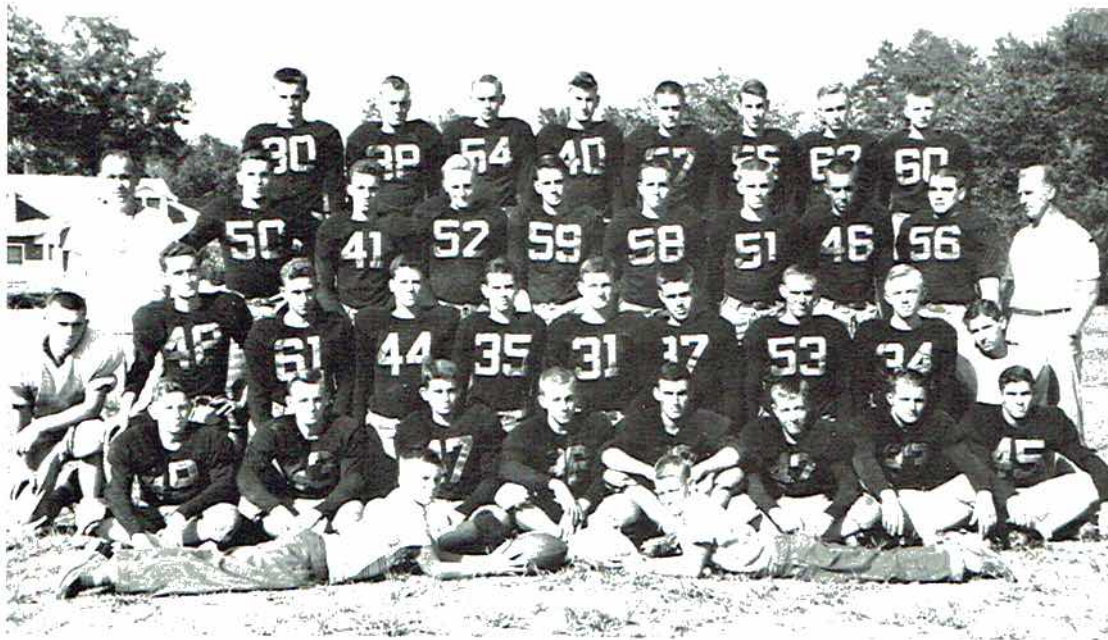
8th GRADE OFFICERS

FIRST ROW, L. TO R.: B. Porter, P. Snoddy, R. Reed, F. Hill, D. Campbell.
 SECOND ROW, L. TO R.: B. Davis, M. Berry, O. Lackey, P. Proctor, M. Swaim, B. Loyd, F.
 De Armond, B. Bullman
 THIRD ROW, L. TO R.: R. Jones, D. McGee, D. Lovell, F. Goodowens, P. Wann, N. McBride

SPORTS



Football



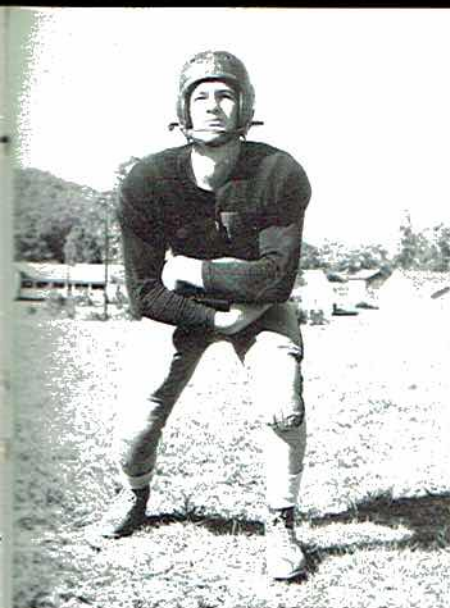
LEFT TO RIGHT, ROW 1--MANAGERS: P. Trammel, R. Hendrix. ROW 2: J. Campbell, E. Arnold, W. Dean, S. Harper, C. Chrisman, J. Huber, H. Sparkman, C. Haas. ROW 3: A. Pockrus, G. Sizemore, V. Hoge, B. Swearingin, B. Myers, J. Thomas, G. Johnson, S. Ray, J. Snodgrass, J. Shavers. ROW 4: Coach Spears, B. Payne, W. Sims, C. Robinson, G. McGee, R. Ambrester, D. Doremus, R. Michaels, J. Phillips, Coach Carter. ROW 5: T. McCutchen, B. Arnold, J. Spears, W. Evans, T. Henderson, W. Bentley, G. Pendergrass, B. C. Perry.



HOME	VISITORS	
12 J.C.H.S.	Gurley	0
13 J.C.H.S.	Blountsville	13
0 J.C.H.S.	Butler	25
19 J.C.H.S.	Albertville	32
0 J.C.H.S.	Cullman	27

HOME	VISITORS	
6 J.C.H.S.	Guntersville	20
20 J.C.H.S.	Oneonta	0
28 J.C.H.S.	Ft. Payne	19
27 J.C.H.S.	Valley Head	
28 J.C.H.S.	Bridgeport	13

Co-Captains: Jack Phillips
Bobby Payne



Johnsie Thomas- F. B.



Cleaburn Christman- Q. B.



Bobby Payne- H. B.



Dickey Doremus- H. B.



Robert Michaels- E



Gene McGee- E

Roy Ambrester- C

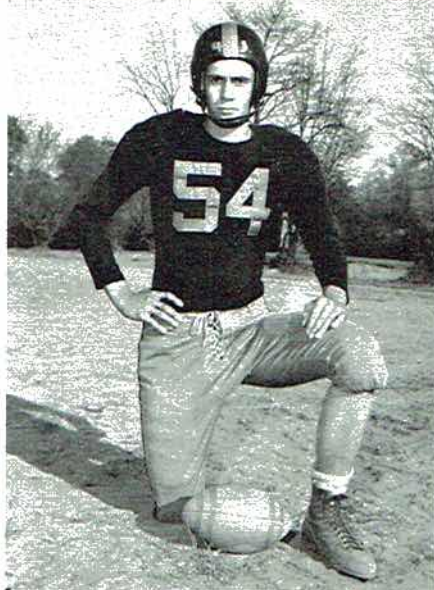
Tommy McCutchen- Q. B.

Jack Phillips- T

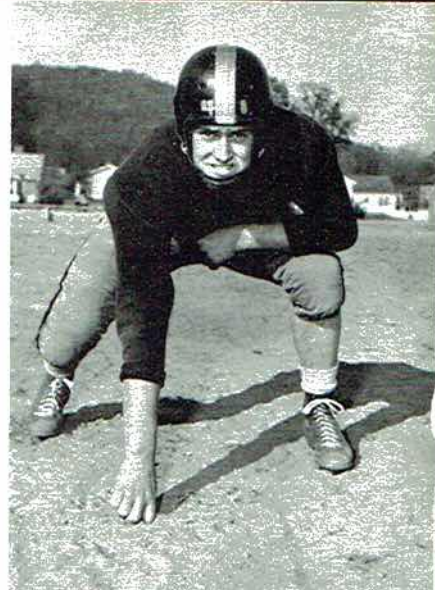




Scott Harper- HB



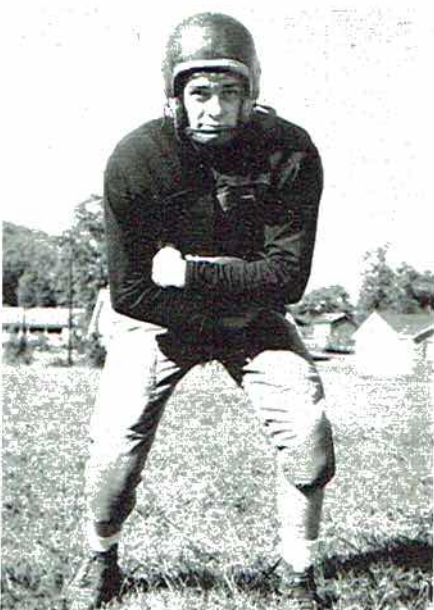
Jimmy Spears- T



Scotty Ray- T



Charles Perry- E



William Dean- FB



William Bentley- E

Henry Sparkman- G

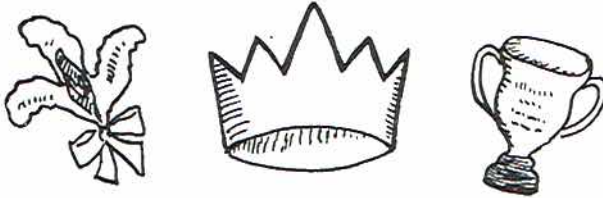
Wannie Evans- G

James Huber- G





Presentation of Loving Cup to Betty Keeble by M. G. Couch

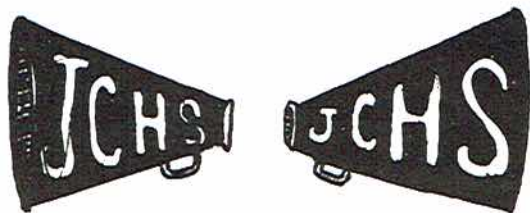


ESCORT-Presley Pendergrass QUEEN-Betty Keeble
ATTENDENTS-Yvonne Letson, Mary F. Proctor

TOXWUOZ-2G



LEFT TO RIGHT: Johnnie Gross, B. G. Hicks, Joyce Hodges, Head Cheerleader: Archie Barclay, Lina Holder.



COMMERCIAL

Basketball



A TEAM, TOP ROW: C. Perry, W. Moore, B. Hale, J. Rounsvall. BOTTOM ROW: R. Nix, B. Carter, T. Whitaker, D. Doremus.

B TEAM, TOP ROW: W. Sparks, B. Keller, W. Bentley, A. Beard. BOTTOM ROW: D. Ashmore, W. C. Walker, O. Halcomb, B. Chandler.





Dicky Doremus



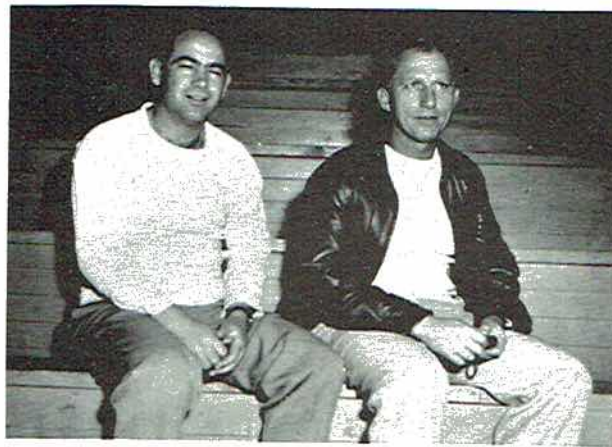
Bobby Carter



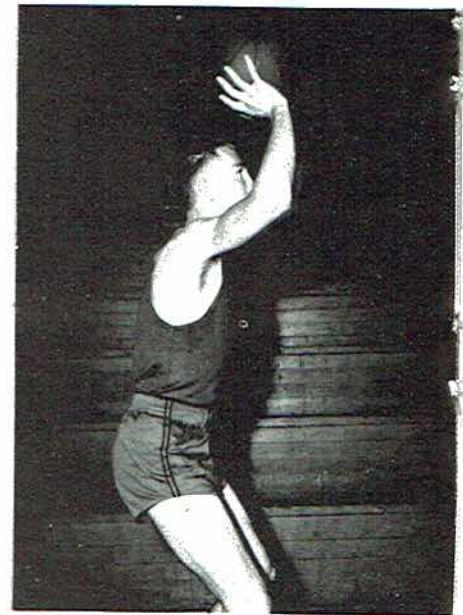
Billy Max Hale



Raymond Nix



Coaches Spear and Carter



James Rounsvall

Walter Moore

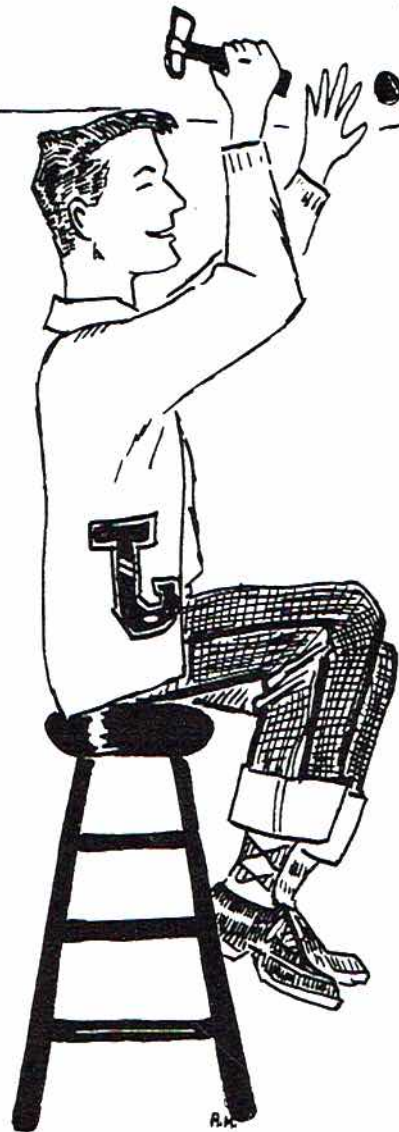


Billy Charles Perry

Thomas Whitaker



ACTIVITIES



Student Council



STANDING: Presley Pendergrass, President. ROW ONE: Bobby Davis; Pat Trammel; William Bentley, Secretary-Treasurer; Charles Smith, Vice President; A. W. Chandler, Bobby Porter. ROW TWO: Jerry Brown, Bobby Payne, Mary Louise Ambrester, Peggy McCampbell, David Campbell, Fowler Goodowens, Wanda Latham. ROW THREE: Dale Trammel, Tommy McCutchen, William Dean, Betty Clyde Ray, Betty Thompson, Jean Dawson, Jimmie Nell Bearden. ROW FOUR: Jo Ann Kennamer, Shirley Machen, Nell Hamilton, Jackie Hamilton. NOT PICTURED: Fred Ake, Ann Maples.

The Student Council, meeting the Tuesday after the first Monday of each month, has been active in discussing and acting upon school problems, with Mr. Couch as faculty advisor. The council, composed of representatives from each homeroom with officers elected from the Senior One, Two, and Three classes, takes up the suggestions of students and teachers. In 1952-53 the council, under President Pendergrass, instigated many campus and building improvements and acted as co-ordinator of faculty and student affairs.



The Wildcat



FIRST ROW, LEFT TO RIGHT: Carolyn Lewis, Jean Cunningham, Tommy Hodges, Jerry Cunningham, Patsy Hall. SECOND ROW: Pat Bates, Jane Hodge, Bettye Thompson, Carolyn Sentell, Carolyn Gilliam, Ann Maples, Ann Barbee, Audie Jo Deerman, Shirley Machen. THIRD ROW: Karen Hodges, Jo Anne Kennamer, Barbara Couch, Mary Lisbeth Jones, Frances Gold, Sherry Martin, Bettye Ray, Betty Keeble, Shirley Carter, Janet Conley. FOURTH ROW: Thomas Dean, Jack Phillips, Archie Barclay, Bobby Payne, Roy Ambrester, Presley Pendergrass, Charles Smith, Pat Trammel.

Editor-in-chief	Ann Maples
Associate Editors	Ann Barbee, Carolyn Gilliam
Business Manager	Archie Barclay
Sponsor	Mrs. Era Spear

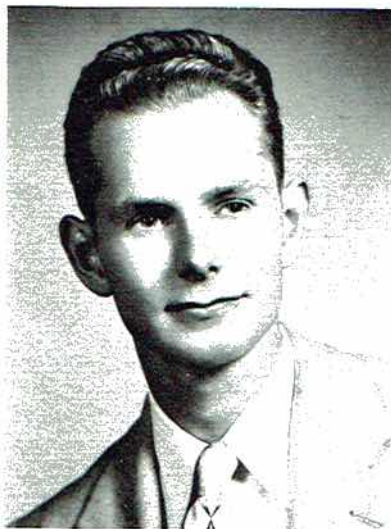
1952-53 saw a radical change in the student newspaper, the "Wildcat". The staff, working on a schedule of one paper a month, brought out an completely new edition of the paper -- in new type, style, and make up. The "Wildcat" is written and illustrated entirely by JCHS students and contains the latest school news, photographs, sports news, features, cartoons and editorials. The many hours of hard work by the staff resulted in a very professional and entertaining student newspaper.



Band



FIRST ROW LEFT TO RIGHT: V. Brandon, J. Paradise - Drum Major, J. Thomas.
SECOND ROW LEFT TO RIGHT: G. Sisk, C. Gilliam, W. Dean, K. McCormick,
B. Couch, J. Vaught, M. Weeks, P. Hall. THIRD ROW LEFT TO RIGHT: A. Maples,
L. Hall, K. Hodges, M. Swaim, R. Precise, M. Keeton, F. Gold, A. Deerman,
FOURTH ROW LEFT TO RIGHT: C. Smith, C. Payne, G. McCutchen, J. Kennamer,
E. Porter, P. Rogers, C. Lewis, J. Adams, G. Stewart. NOT PICTURED: Yvonne
Letson, Carolyn Gist, Autry Gardner, Joel Hodges, Bobby Stewart, Stella Word,
Mr. George Baker.



Bandmaster, George Baker



Carolyn Gilliam,
Pres.



Frances Gold,
Vice-Pres.



Stella Word,
Sec.



Ann Maples,
Treas.



Charles Smith
Bus. Mgr.

Although hampered by the loss of senior members and a little trouble in procuring a director, the Jackson County High School Band has made enormous strides. The number of members are smaller this year but the musical abilities of each member has been developed. These abilities have been demonstrated by the band in several concerts this year. Mr. Baker, the director, states that the band has the capabilities to become one of the top bands of the states in no more than three years. Congratulation, Band and more power to you.





SENIOR GLEE CLUB

AT THE PIANO: Mrs. Frank Hodges: Director. FIRST ROW-LEFT TO RIGHT: R. Allison; G. Linville; A. Knight; E. Sisk; H. Swearengin; M. Bradford; S. Crawford; S. Jenkins, accompanist; L. Cline; B. Cotton; B. Glass; F. Matthews; J. Ferguson; M. Proctor; N. Tigue; J. Lemons; A. R. Selby. SECOND ROW: L. Holder; L. Benefield; J. Stoner; B. J. Ball; E. Beard; S. Blansit; W. Pope; F. Wilkerson; J. Williams; S. Holland; R. Nichols; S. Campbell; M. Guffey; M. A. Smith; V. Beard; G. Berry; J. Henerson; M. D. Talkington. THIRD ROW: J. Hodges; J. James; R. Precise; H. Welborn; I. Hancock; F. Strawn; S. Headrick; A. West; M. Bynum; J. Dean; L. Wininger; M. G. Pace; B. Talley; J. Moore; B. Sparks; L. Henshaw; W. Traylor; F. Woens; F. Wilkerson. FOURTH ROW: B. J. Haynes; E. Evans; G. Glass; B. G. Hicks; C. Smith; J. Phillips; R. Ambrester; C. Robertson; A. Bellomy; C. Sharp; J. Rounsvall; C. Campbell; W. Jones; B. J. Isbel; S. Sanders; S. Carter; V. Carter; B. Wright.

OFFICERS

President- B. G. Hicks
 Vice President-Condon Campbell
 Secretary-Sue Holland
 Treasurer-Charles Smith

Sponsored by A FRIEND

F. T. A.



FIRST ROW LEFT TO RIGHT: A. Barbee, M. Millican, P. Hall, M. Thomas, L. Hollaway, L. Foster, M. Swaim, L. Holder, H. Bellomy. SECOND ROW: B. Berry, S. Jenkins, F. Carter, C. Dilbeck, S. Holland, J. Hamilton, B. Talley, M. Keeton, Mrs. Hambrick, Miss Michaels. THIRD ROW: S. McLaughlin, J. Hodges, B. Hicks, C. Smith, C. Campbell, J. Russell, D. Black, J. Riley, J. Hodge.

Pres- Mary Dell Swaim
 Vice Pres- Lina Holder
 Sec.- Mary Frances Millican
 Treas.- Ann Barbee



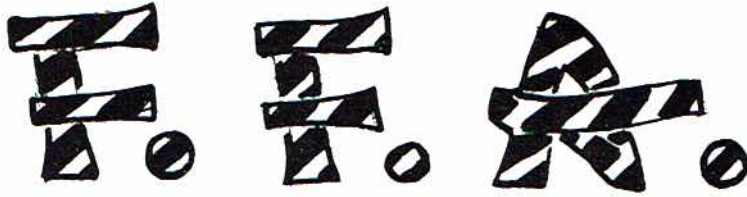
SECOND YEAR

FIRST ROW, LEFT TO RIGHT: J. James, M. Proctor, M. N. Ivey, N. Teague, S. Brogden. SECOND ROW: V. Carter, I. Hancock, E. Hall, C. Lewis, C. Gist, B. Middleton. THIRD ROW: Mrs. Turner, L. Roberts, B. Womack, J. Ferguson, E. Dudley, J. Johnson, R. Allison. FOURTH ROW: J. Riley, M. L. Whitehead, F. P. Hall, M. Stewart, M. Dickerson, S. Watson.



FIRST YEAR

FIRST ROW, LEFT TO RIGHT: N. Hamilton, I. Manning, R. Nevils, B. D. Allen, M. Parker, M. Roberts, E. Shirey, S. Harper, R. Nichols, J. Stewart, D. Pickles, B. E. Smith. SECOND ROW: B. S. Baugh, S. Beard, B. J. Garner, D. Crawford, J. B. Welch, V. Beard, M. Whitaker, B. Reed, E. M. Rounsvall, H. Bellomy, J. Staton, J. R. Meyers, D. A. Haynes, C. Green, G. Linville. THIRD ROW: Mrs. Turner, J. Sebring, P. Goolesby, M. Jenkins, B. Gann, M. Dean, B. Knopps, M. F. Swinford, A. J. Wilkerson, S. McCutchen, D. Hastings, R. Christa, J. Mann, W. Green, J. Preston. FOURTH ROW: J. Staton, G. Hamilton, L. Outlaw, B. Matthews, D. Precise, M. L. Stone, C. Brazelton, L. Foster, S. Gross, L. Snoddy, J. Gross, M. Ryan.



AGRICULTURE I

FIRST ROW--LEFT TO RIGHT: R. Johnson; D. Womack; F. Evett; B. Myers; F. Ake; W. Davis; B. Dukes. SECOND ROW: W. Reed; B. Riley; G. Dodson; L. Germany; E. Shelton; W. Britt; P. Holcomb; J. Beam; L. McCutchen; H. Carter; D. Walden; G. Goff. THIRD ROW: C. Hass; K. Johnson; K. Chandler; J. Middleton; A. Beard; W. Lingerfelt; H. Bellony; G. Hastings; B. James; E. Gray; J. Bryant; Mr. Phillips. FOURTH ROW: B. Gant; J. Arnold; J. Swearingin; E. Arnold; R. Westmoreland; C. Jacobs; A. Brannon; B. Mitchell; G. Bray; W. Wilborn; R. Gross.



AGRICULTURE II

FIRST ROW: R. Nix; T. Whitaker; T. H. Patterson; M. Miller; P. D. McCarver; B. Matthews; T. Hancock. SECOND ROW: D. Culpepper; M. Murphy; H. Moore; B. Boozer; T. Henderson; J. Thomas; W. Evans; A. L. Outlaw; B. Caperton; THIRD ROW: D. Gibson; A. Bellomy; W. Shelton; B. G. Culpepper; D. Lackey; R. Blizzard; G. Pendergrass; J. Cook; V. Hodge; W. Finney; Mr. Phillips. FOURTH ROW: B. Kennamer; R. Michaels; B. Arnold; W. C. Pickett; C. Sumner; F. Southerland; W. Moore; P. Brandon; E. Rogers; D. Gentle.

Sponsored by A FRIEND



The Reminder



Mary Dell Swaim,
Editor.



Ann Barbee,
Assistant editor.

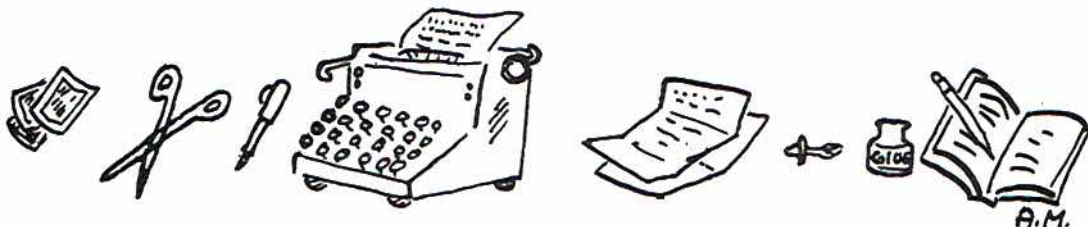


Miss Lilly Porter,
Sponsor.



Gary Sizemore,
Business Manager.

In November the annual staff was selected from volunteers. Some important procedures were changed. Our school pictures were made during the summer. One thing was unchanged, however--the rush to meet the deadline. February saw the last shipment of annual copy on the way to publishers and a much-relieved Reminder Staff.





EDITORIAL STAFF

ROW 1, Janet Conley, Ann Maples, Johnny Campbell, Ann Barbee, Mary Dell Swaim, Jane Hodge. ROW 2, Gary Sizemore, Condon Campbell, Dorthan Black.

SALES AND CIRCULATION

ROW 1, Shirley Crawford, Janet Conley, Mary Lisbeth Jones, Pat Bates. ROW 2, B. G. Hicks, Mary Alice Thomas, Betty Keeble, Shirley Carter. ROW 3, Presley Pendergrass, Johnny Campbell, Gary Sizemore.



TYPISTS AND FEATURES

ROW 1, Jane E. Hodges, Betty Ray, Mary Lisbeth Jones, Carolyn Lewis, Charles Smith. ROW 2, Mary F. Millican, Shirley Carter, Jack Phillips, Roy Ambrester.

WINNERS



Bobby Kenamer,
Magazines
Bobby Carter,
Annals

Shirley Carter,
Ads.

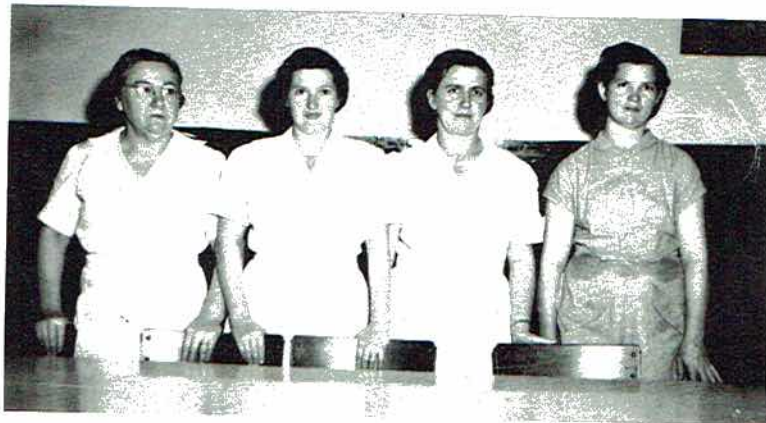


Ann Maples; Birmingham News
Oratorical Contest.



Archie Barclay; American Legion
Oratorical Contest.

CO-WORKERS



s. Andy Hamlet,
s. D. C. Keith,

Mrs. Mary Proctor,
Mrs. Eloise Walker.



Look at me!
Ain't I purty?



UGH! !

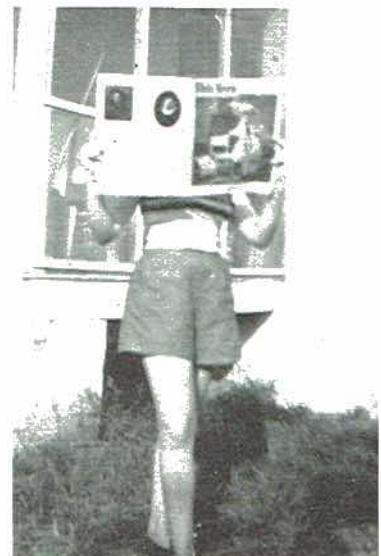


Who's Scared? Me?

"---Grandma's
Lye Soap---



Three birdies watch
the Birdie



"You're sure it
won't go in the
Annual?"





Here is a good start in our future faculty - Supt. Hicks



Commercial teacher - Spear



Reminder Editor - Swaim.



Time pass and people change



but "Pretty Boy" stays the same

Our Fans "Uncle Dan" Clemons



and H. E. Phillips.



"The Young Man With the Horn" - Payne



Guess Who



Charlotte Mewborn

Mary Dell Swaim

Jane Riley

Cleaburn Chrisman

Bobby Payne

Carolyn Gist

Shirley Headrick

Gary Sizemore

Bettye Clyde Ray

Mary Frances Millican

B. G. Hicks

Gene McGee

Charlotte Dilbeck

Audie Jo Deerman

Dorthan Black

Jane Hodges--Jack Phillips

Bobby Kennamer

Shirley Crawford



Dear Diary:

July - School opens; Seniors at last.

August - Pendergrass voted Student Council President; Payne, President of Senior Class
Football season opens with victory over Gurley.

September - Out for cotten picking.

October - Homecoming; Betty Keeble Queen.

November - Started back to school.

Deafeated Bridgeport in last football game of season; won basketball opener.
Started magazine sales.

December - Reminder underway; Mary Dell Swain Editor.
Out for Christmas.

January - Seniors enter essay contest on 'Why I Believe in the American Way of Life.'

February - Faculty - Seniors basketball game;
Proceeds to Senior Trip
Senior Day.

March - Career Day
Last basketball game.
Junior - Senior Banquet
a. e. a.

April -

May - Senior Literature Test
Graduation.

Advertising



E. S. HOLLIS

Shop at Hollis' and See the Difference

Arrow Shirts Roblee Shoes
Robin Hood Shoes Stetson Hats
Tom Sawyer Boys' Wear Hickok Belts

See Our Shoe Department

SCOTTSBORO AUTO PARTS

"Your N A P A Jobber"

W. J. WORD LUMBER COMPANY

Phone 38

VARIETY BAKE SHOP

Bakery Specialties

For all Occasions

Phone 424-J

LOCKER PLANT

Scottsboro, Ala.

WAYNE WOOD'S

GROCERY

WORD MOTOR COMPANY

Oldsmobile Chevrolet

PEGGY'S SHOPPE
"Exclusive but not Expensive"
Scottsboro Alabama

MASSEY-DAWSON EQUIPMENT COMPANY
Massey-Harris Dealer
Tractors, Combines and Implements
Scottsboro, Alabama

SCOTTSBORO PRODUCE COMPANY

Groceries Candy
Plants Shubbery
Seeds Baby chicks
Phone 71

MAJESTIC CAFE
Tom Sisk--Owner

Compliments
of

HAMMER'S

Drygoods Clothing
Shoes
Reasonably Priced

H. B. KEEBLE & COMPANY
General Merchandise
Hugh Keeble - Manager
310 Broad Street
Scottsboro, Alabama

Compliments of
V. J. ELMORE
5 cents, 10 cents & \$1.00 Stores,
Inc.
Scottsboro, Alabama

SADLER'S
You Can Buy For Less
But You Can't
Buy Better

QUALITY STORE
Your Money Worth or Your Money Back
Complete Line Of
Clothing and Shoes
For Men, Women & Children
Scottsboro, Alabama

STEINBERG'S
A Bigger Store
A Better Store
Scottsboro's Largest Store

BEDDING FIELD MOTOR'S
Buick Cars
G. M. C. Trucks

EVERYTHING IN HARDWARE
KELVINATOR APPLIANCES

COPLIN HARDWARE COMPANY

WOODALL'S
READY TO WEAR
Headquarters for School Wear

DARWIN'S
Phone 183-J
Scottsboro, Ala.

Tom Brown, R. A. Kennamer
E. K. Bergman

BROWN-KENNAMER & BERGMAN
INC.

Furniture

210 Broad St. Phone - 94
Scottsboro, Alabama

Frigidaire Maytag

WALES JEWELRY CO.

Scottsboro, Alabama

REID SUNDRIES

RED HOT STORE

Phone 210-J

Scottsboro, Alabama

M. H. CAMPBELL TRACTOR CO.

Ferguson Tractor & Imp.

Pontiac Dealer

Phone 234-J Scottsboro, Ala.

MAPLES COMPANY

Makers of

The Finest chenille Bedspreads,

Bath Sets & Rugs

SCOTTSBORO HARDWARE CO.

The School's Friend

H. O. BYNUM AND SON

Allis Chalmers - Sales & Service

Scottsboro, Alabama

Phone 409-J

B & G BUTANE-PROTANE GAS COMPANY

Cooking

Heating

Refrigerating

Water Heating

PATRICK
LUMBER CO.

CALDWELLS SUPER MARKET
A Good Place to Trade

BUS STATION
Magazines & Sodas
Mr. and Mrs. Joe McGahey

Compliments
of
LINDSAY BOYD

SCOTTSBORO WHOLESALE COMPANY

Wholesale Grocers

Scottsboro, Ala.

Phone 133

Distributors of

Sunflour

American Fence

Stokely*Van Camp Foods

Kelly Springfield Tires

Happy Kids Pickles and Peanut Butter

Dixie Lily Flour

Tenneseal Roofing

Blue Plate Mayonnaise

BENHAM

UNDERWEAR MILL

WESTERN AUTO ASSOCIATE STORE

K. L. Cash, Owner

(The Stores That Serve The Nation)

Phone 146

Scottsboro, Alabama

THE MILL ENDS STORE

Cloth-Sewing Supplies

Hosiery-Underwear

Telephone 447-L

F. D. PROCTOR TRACTOR CO.

P.O. Box 420 Phone 67

Scottsboro, Alabama

MR. & MRS. J. B. PRESLEY

Five Points Motel

BAMATUFT CO.

Scottsboro, Alabama

Manufacturers of Chenille Bedspreads

HODGES DRUG STORE

Where the World's best People

Drink

The World's Worst Coffee

WRIGHT AND MCNEIL

Service Station

Atlas Tires, Tubes, Batteries & Accessories

THOMAS DRUG STORE

Wm. T. Thomas, R. Ph.

Prescriptionist

Phone 115

Scottsboro, Ala.

BRITT'S TOY HOUSE

Toys Bicycles Tricycles

CAMPELL

SEED CO.

FOSTER'S

SUPER MARKET

ROUGH & TUMBLE FURNITURE CO.

The Little Man's Friend

Phone - 238-J

BOBBIE'S BEAUTY SHOPPE

We need your head in our business

Phone 5

Owner - Bobbie Manning

BOYKIN MERCURY SALES

Lincoln Mercury Cars

Harley-Davidson Motorcycles

Sales & Service

DAVIS CLEANER'S

Fancy Dry Cleaning

Phone - 344-L

JULIAN HAMBRICK

Seeds-Feeds-Groceries

Phone 357

Next to Post Office

JESSICA HOTEL

Owner Mr. and Mrs. O. C. Proctor

ANN'S CAFE



West willow Highway 72

The pigs are dying for you to eat

W. E. TANKERSLEY, AGENT

State Farm Insurance Company

SCOTTSBORO FLOWER SHOP

Say it with Flowers

Phone 23

Auto Life Fire

Compliments of

H. O. WEEKS

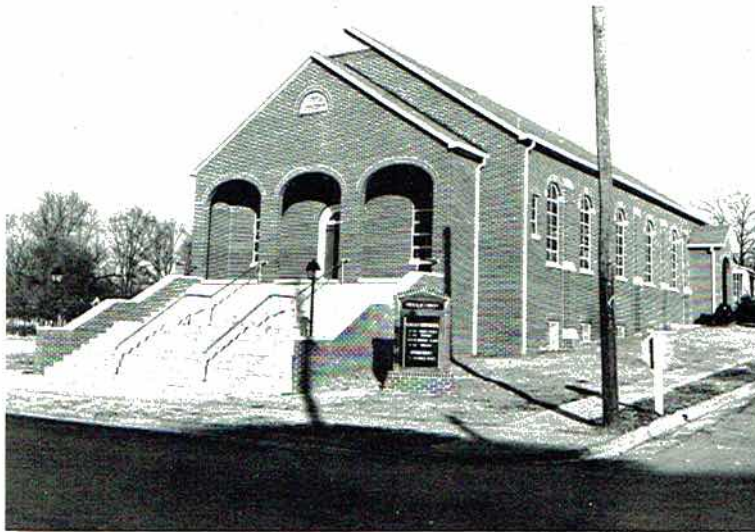
L. G. BALFOUR CO.

Class Rings, Invitation, Personal, Diplomas

210 Clark Building

P. O. Box 1072

Birmingham, Alabama



"Where Christ and Christians Meet"
Broad Street and Charlotte Avenue
Scottsboro, Alabama

"But I will tarry at Ephesus until Pentecost.
"For a great door and effectual is opened un-
to me, and there are many adversaries."
---Apostle Paul, I Cor. xvi, 8, 9.

These words of Apostle Paul in regard to his future plans could well be applied to each of you who are students of Jackson County High School. The doorway which stands ajar for you is simply the right which you have to so many privileges and opportunities for developing yourselves as better servants of God and solid citizens of our land of Freedom. In spite of your own adversaries, will you not determine to "tarry here" until you have made full use of your opportunities to live and learn by which you will be better equipped to serve God in His Church, to serve yourselves, to serve your fellowman, and to serve your Country.

By leaving with your senses sharpened through knowledge and wisdom, you will be prepared for a life that is rich and deep and full of the better things of life. It is only through an unconquerable Faith in Christ which leads you to obey His every command that you can enjoy the best which can be found in Life--and in Death. The doorway to a Christian Life stands open for you; Christ and His Church say, "Come!"

CHURCH OF CHRIST

ELDERS:
Quitman Howard
C. S. Kennamer

Minister
Jack Wilhelm

Deacons
R. B. Derrick
W. J. Derrick
Sanford Roberts

EVERY VISITOR AN HONORED GUEST