



THE REMINDER 1960

*John Darnell*  
*1960, the tenth year*

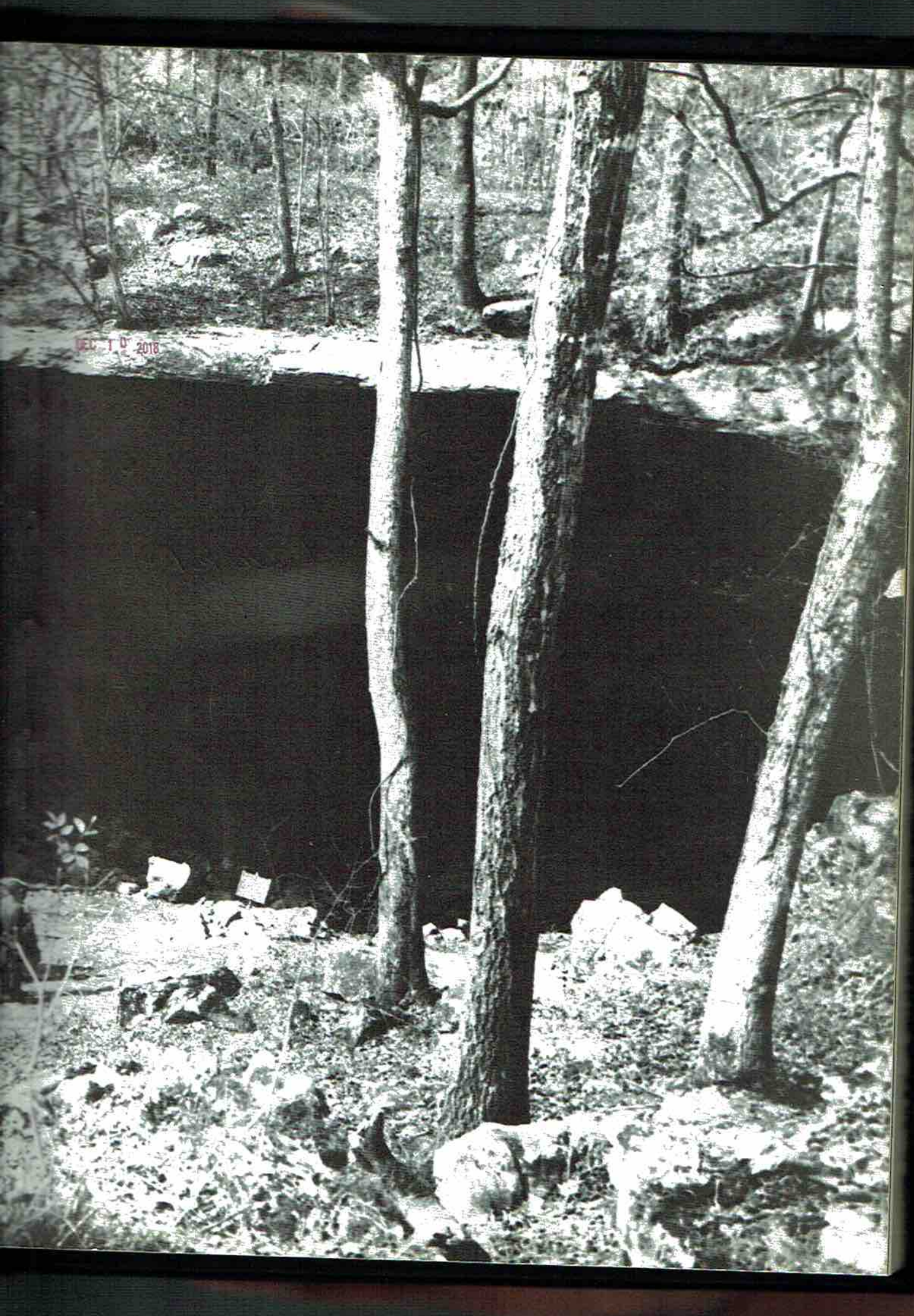
Photographs taken at

CATHEDRAL CAVERNS

Grant, Alabama

R  
Ala  
976.102  
Rem  
1960

3001 S. BOND STREET  
1002 South Broad Street  
Scottsboro, Alabama 35768



# The Reminder



EDITOR - Tommy Armstrong

ASSISTANT - Vera Carter

## THEME

In our modern world of today, there is always the forward look. The 1959-60 Reminder was designed to make us more appreciative of our cultural blessings of today and to light a torch for higher intellectual learning. To do this, let's go back to the days of the Cave Men. You'll see what would happen to Scottsboro High School if civilization were to come to a halt. Won't you join us as we present a very unusual view of a year with Scottsboro High!

# Reminder Staff 1959 - 60



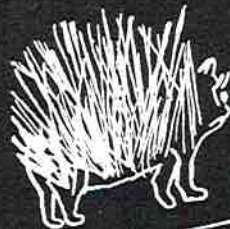
MEMBERS: Linda Blackwell, Elizabeth Wilson, Tallulah Cunningham, Patsy Derrick, Rosalie Maples, Linda Cordell, Sandra Rudder, Brenda Frazier, Charlotte Rudder, Shirley Cook, Bobbie Loyd, Charles Heath, Celeste Chambers, Jo Pell Brandon, Linda Nell Shelton, Frances Edge, Sandra Murrah, Barbara Bankston, Jean Coplin, Jill Porch, Jackie Grider, Elizabeth Shofner, Carolyn Keel, Cathryn Keel, John Blackwell, Mickey Bell, Jerry Girt, Shiles McCord, Martha Campbell.



HEADS OF STAFF: Jackie Porch, Advertising; Tommy Armstrong, Editor; John Frank Armstrong, Circulation; Vera Carter, Assistant Editor; Martha Woodall, Classes; Sue Bradford, Organizations; Bill Beard, Sports; Donna Holder, Art; Mary Ann Harris, Features. SPONSORS: Mrs. Broome and Mrs. Heath.

# Table of Contents

Title Page  
Annual Staff  
Table of Contents  
Dedication  
Faculty  
Faculty Snapshots  
Seniors  
Last Will and Testament  
Prophecy  
Juniors  
Sophomores  
Freshmen  
Miss Homecoming  
Homecoming Attendants  
Miss F.H.A. and Alternates  
F.H.A.-F.F.A. Sweethearts  
Good Citizenship Girl  
Betty Crocker Homemaker  
McCall's Teen Fashion Board  
Senior Who's Who  
Student Council  
Wildcat Staff  
Future Homemakers of America  
Future Farmers of America  
Future Teachers of America  
Science Club  
Library Club  
Nurses Club  
Pep Club  
Majorettes  
Band  
"S" Club  
Office Assistants  
Cheerleaders  
D. O.  
National Honor Society  
Football  
Football Snapshots  
Basketball  
Basketball Snapshots  
Baseball  
Advertising



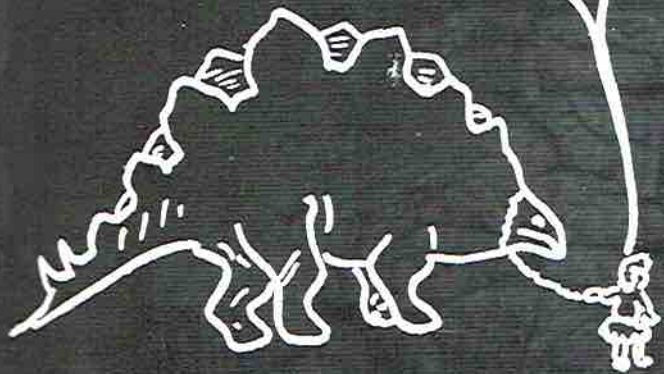


## Dedication

Great pride is taken in the dedication of the 1959-60 Reminder to Mrs. William Sloan. Mrs. Sloan is the capable physical educational director for girls. The students of Scottsboro High believe her worthy of this honor on the basis of her achievement in the aid of our mental, moral, and physical growth. It is our wish that she be a symbol of the untiring guidance, rendered by our faithful faculty in the school year of 1959-60.



Please ma,  
Cant I keep  
him?



D.T.H.



Faculty And  
Administration



# Administration and Faculty



ERSKINE S. MURRAY,  
M.A.  
Florence - Peabody  
Principal



RAY COLLINS, M.A.  
Florence - Peabody  
Assistant Principal



MRS. GEORGE  
ARMSTRONG, M.A.  
Athens - Peabody  
English, History



ORRIS LEE,  
Jacksonville  
Band



MRS. JACK BROOME,  
B.S.  
Florence  
Typing, Bookkeeping



Q. K. CARTER, B.S.  
Jacksonville  
Basketball Coach



MRS. NEWMAN DAVIS,  
A.B.  
Jacksonville - University  
of Alabama  
English, Public Speaking



MRS. R. MINE  
HAMBRICK, M.A.  
Alabama College  
Peabody  
English



H. E. PHILL  
Mississippi  
Peabody  
Vocational A



MRS. CHARLES HEATH,  
B.A.  
Mary Hardin Baylor  
Librarian



MRS. SAM HODGES, JR.  
A.B.  
University of Alabama  
Democracy, Spanish,  
English



MRS. RUDOLPH JONES,  
B.A.  
University of Alabama  
English, Civics



MRS. JOE LEE, M.A.  
University of Alabama  
Peabody  
Biology



MRS. FRED S.  
M.A.  
University of  
Peabody  
Mathema



MORRIS LEE, B.S.  
Jacksonville  
Band



JOHN MEADOWS, M.A.  
Jacksonville - Peabody  
Football Coach



MISS CORA MICHEALS,  
M.A.  
Bethel College  
University of Alabama  
Mathematics



MRS. KENNETH MUSE,  
A.B.  
Athens  
Shorthand, Typing, Book-  
keeping



H. E. PHILLIPS, M.S.  
Mississippi State  
Peabody  
Vocational Agriculture



MRS. J. R. PORCH,  
M.S.  
Jacksonville - Auburn  
English, Math



J. R. PORCH, M.S.  
Jacksonville - Auburn  
Diversified Occupations



MISS LILLY PORTER,  
M.A.  
University of Alabama  
Science



MRS. FRED SANDERS,  
M.A.  
University of Alabama  
Peabody  
Mathematics



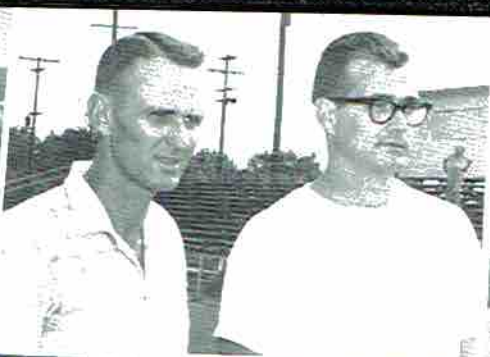
MRS. WILLIAM SLOAN,  
B.S.  
Jacksonville  
Physical Education



MRS. BOYD TURNER,  
B.S.  
University of Tennessee  
Vocational Home  
Economics



RICHARD L. TYLER,  
A.B.  
Birmingham Southern  
American History





Hw, home  
on Rex  
Sibul

# Seniors

CLASS FAVORITES

John Blackwell - Vera Carter

GEORGE DAVID  
ADAMS

Pep Club '58-'60, Foot-  
ball '57, F.F.A. '59-'60.



RAYFORD ALLEN

F. F. A. '57-'60.



WANDA ALLEN

F. H. A. '57-'58, F. T. A.  
'57-'60.



TOMMY ARMSTRONG

Basketball '54-'58, Band  
'54-'57, Student Council  
'56-'57, Wildcat Staff  
'54-'60, Assistant Editor  
'58-'59, Reminder Staff  
'54-'60, Circulation  
Manager '58-'59, Editor  
'59-'60, F. T. A. '57-'60,  
Parliamentarian '58-'59,  
President '59-'60, "J"  
Club '57-'58, Cheer-  
leader '57-'58, National  
Honor Society '60.



BILLY ARNOLD

Football '56-'57, Bas-  
ketball '55-'57, "S"  
Club '55-'57, Science  
Club '58, Baseball '58.



BOBBY ARNOLD

F. F. A. '57-'60, Football  
'58-'59, "S" Club '59-  
'60.



TOMMY ASHMORE

Glee Club '57-'58, Pep  
Club '58-'60, Annual  
Staff '59-'60, Student  
Council '56-'57, Sports-  
man's Club '59-'60.



BILL BEARD

Football '58-'60, Basket-  
ball '54-'60, Baseball  
'56-'60, Annual Staff  
'59-'60, "S" Club '56-  
'60, Vice-President "S"  
Club '60, Sportsman's  
Club '60, Pep Club '60.



MICKEY B

Annual Staff  
Student Council  
Vice-President  
Glee Club '57-  
Club '58-  
'58-'60, Basket  
'58, Football  
Co-Captain  
Baseball '58-'60

GIENDA B

Library Club  
Spanish Club  
F. T. A. '57-'  
Club '58-'59, Vi  
Pep Club  
Science Club  
Band '54-'60, M  
'58-'60, Head M  
'58-'60, Miss  
Camp Jackson  
Homecoming A  
'58, Class Favo  
'58, Good Cit  
Club '59-'60, Ho  
ing Queen '59  
Miss '59-'60.

JAMES BRAD

F. F. A. '57-'60

LINDA BRY

F. F. A. '57-'60  
F. H. A.  
Pep Club '59-'60

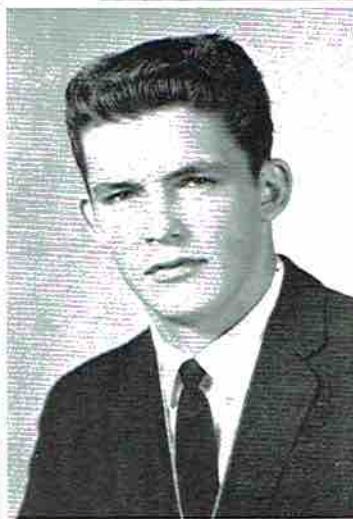
MICKEY BELL



WILDA BELLAMY

F. H. A. '57-'58.

GLENDIA BISHOP



JOHN BLACKWELL

President Student Council '60, F. T. A. '58-'59, Parliamentarian '60, National Honor Society '60, Basketball '54-'60, Pep Club '60, Class Favorite '60, Wildcat Staff '59-'60, Reminder Staff '58-'60, President Junior Class '59, Baseball '58-'60, Football '54-'59, "S" Club '58-'60, Senior Who's Who, Most Handsome, Courteous, Popular, Neatest, Best All Around.

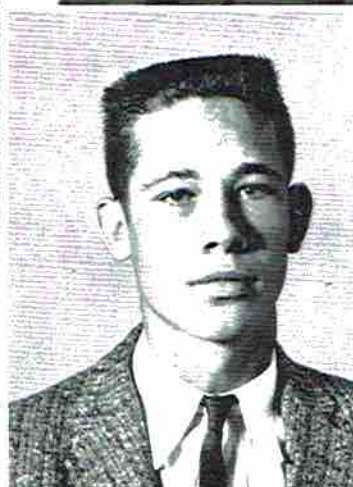
JAMES BRADFORD



KENNETH BRADFORD

F. F. A. '57-'60.

LINDA BRYANT



JAMES BYRD

F. F. A. '57-'60.

Annual Staff '59-'60, Student Council '57-'59, Vice-President '58-'59, Glee Club '57-'58, Science Club '58-'60, Pep Club '58-'60, "S" Club '58-'60, Basketball '54-'59, Football '59-'60, Co-Captain '59-'60, Baseball '58-'60.

Library Club '56-'57, Spanish Club '58-'59, F. T. A. '57-'60, Pep Club '58-'59, Vice-President Pep Club '59-'60, Science Club '59-'60, Head '54-'60, Majorette '58-'60, Head Majorette '58-'60, Miss Junior Camp Jackson '55-'56, Homecoming Attendant '58-'59, Class Favorite '58-'59, Good Citizenship Club '59-'60, Homecoming Queen '59, Who's Who '59-'60.

F. F. A. '57-'60.

F. F. A. '57-'60, President F. H. A. '57-'58, Pep Club '59-'60.

VERA CARTER

Band '54-'57, F. T. A. '57-'60, Chaplain '58-'59, Vice-President '59-'60; Pep Club '58-'59, Secretary '59-'60; Annual Staff, Assistant Editor '59-'60, Vice-President of Junior Class '58-'59, Girl's State '58-'59, Class Favorite '59-'60, Office Practice '59-'60, National Honor Society '60.

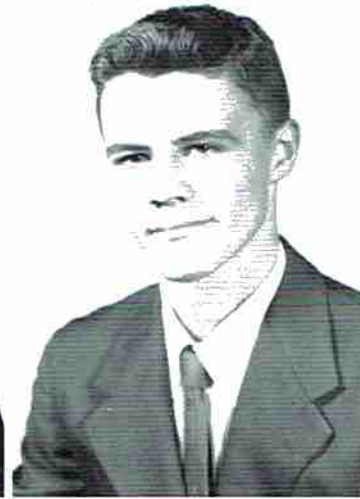


GERALDINE CHANDLER

F. H. A. '57-'59, Treasurer F. H. A. '57-'58, Parliamentarian F. H. A. '58-'59, Nurse's Club '58-'59, Pep Club '58-'60.

JUDY CLEMENS

Glee Club '55-'56, Nurse Club '58-'59.



TERREL CLEMENS

F. F. A. '57-'58, D. O. '58-'60, D. O. Vice-President '59-'60.

DOROTHY CORNELISON

Glee Club '57-'58.



MARVIN CORNELISON

F. F. A. '57-'60.

TALLULAH CUNNINGHAM

Nurses Club '58-'60, Annual '59-'60, Wildcat '59-'60, Pep Club '58-'60, National Honor Society '60, Library Club '56-'59, Glee Club '56-'58, F. H. A. '57-'58.



FRANCES DANIEL

Annual Staff '59-'60, Pep Club '58-'60, F. H. A. '57-'60, President F. H. A. '57-'58, Library Club '59-'60, Secretary of Library Club '59-'60, F. H. A. Representative to Montevallo '59-'60, State Homemaker's Degree '58-'59, Miss F. H. A. '57-'58.

BILLY

Student C  
Vice-Pres  
Class '59-  
'59-'60,  
'60, Conc  
man '59  
Worker '5

GLYNN

Band '54-  
'59, S  
'54-'59,  
Escort '58-  
Inspector  
'58, Junio  
Club '60.

WALTER

F. F. A. '5

**BILLY RAY DAVIS**

Student Council '59-'60,  
Vice-President Senior  
Class '59-'60, Pep Club  
'59-'60, Baseball '59-  
'60, Concessions Chair-  
man '59-'60, Office  
Manager '59-'60.



**ROSS DAVIS**

Band '54-'60, First Lieu-  
tenant of Band '58-'59,  
Captain of Band '59-'60,  
Bugler '57-'60, Basket-  
ball Scorekeeper '58-'60,  
Pep Club '58-'60, Wild-  
cat Staff '59-'60, Annual  
Staff '59-'60, Science  
Club '58-'60, President  
of Science Club '59-'60,  
Friendliest '59-'60, Bas-  
ketball '56-'57, All-  
State Band '60.

**GLYNN DERRICK**

Band '54-'55, Pep Club  
'59, Student Council  
'59, Homecoming  
Committee '58-'59, P.A. and  
Director Manager '59-  
'60, Junior Sportsman's  
Club '60.



**LYNN DERRICK**

Glee Club '57-'58, Re-  
minder Staff '58-'60,  
Science Club '58-'59,  
Pep Club '58-'60, Wild-  
cat Staff '59-'60, Sports-  
man Club '59-'60.

**WALTER DODSON**

F. H. A. '57-'60.



**ERA FAYE EDMONDS**

F. H. A. '58-'57.

**JOYCE EDWARDS**

F. H. A. '57-'60, D. O.  
'59-'60.



**BILLY GENE FARR**

Pep Club '59-'60, Na-  
tional Honor Society '60,  
Junior Sportsmen's Club  
'59-'60.



KATHERINE FINNEY

Glee Club '57-'58, F.H.A. '57-'58, Class Reporter '58, Pep Club '58-'59, F. T. A. '57-'60, P. T. A. Student Representative '60, National Honor Society '60, Betty Crocker Homemaker of Tomorrow '60.



HOLLAND FLOYD

Basketball '55-'60, F.F.A. '57-'60, Student Council '59-'60, "S" Club '57-'60, Pep Club '59-'60.

BRENDA FRAZIER

Band '54-'57, F. H. A. '57-'59, F. H. A. Vice-President '58-'59, State Homemaker's Degree '58-'59, F. H. A. Representative to Montevallo '57-'58, F. T. A. '57-'60, Pep Club '58-'60, Wildcat Staff '59-'60, Annual Staff '59-'60, Office Assistant '59-'60, Class Staff of Annual '59-'60.

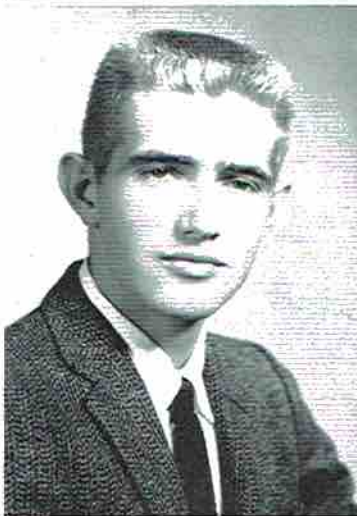


BILLIE RUTH GENTLE

F. H. A. '57-'58.

TOM GEORGE

D.O. Club Reporter '59-'60, D.O. Club '58-'60.



JERRY GIST

Football '54-'57, Basketball '55-'60, "S" Club '55-'60, President Pep Club '58-'59, Pep Club '58-'60, Student Council '55-'58, Wildcat Staff '58-'59, Annual Staff '57-'60, Class Favorite Junior Class '59, Library Club '58-'59.

PHILLIP GREEN

"S" Club '55-'60, Student Council '57-'58, Pep Club '58-'60, Football '55-'60, Basketball '55-'58.



BILLY ZAKE GROSS

D.O. Club '58-'60.

JIMMY GROSS

Science Club '58-'60.



LEE HARRINGTON

F.T.A. '58-'60, Pep Club '58-'60, President Pep Club '59-'60, Science Club '58-'60, Wildcat Staff '57-'60, Sports Editor Wildcat Staff '58-'59, Business Manager Wildcat Staff '59-'60, National Honor Society '59-'60, Wittiest of Senior Class '59-'60.

ALICE HASTINGS

F.H.A. '57-'58.



BOBBIE JEAN HAYNES

Glee Club '57-'58, Pep Club '58, Nurses' Club '58, F.H.A. '57-'58, Library Club '58, Most Athletic '59-'60.

CHARLES HEATH

Basketball '57, Wildcat Staff '59-'60, Reminder Staff '59-'60, Spanish Club '59, Secretary-Treasurer Spanish Club '59, Science Club '59-'60, Band '54-'60, National Honor Society '60, School Sports Reporter '59-'60, Basketball Statistician '59-'60, National Science Foundation Scholarship '59, Treasurer of Senior Class '59-



ANN HESS

F. H. A. '58-'59, Vice-President F. H. A. '58, Class Favorite '58, F.F.A. Sweetheart '58-'59, Pep Club '59-'60, State Degree '59.

GLENN HOLT

F.H.A. '57-'58, D.O. '58-'60.



DOYLEENE HOOPER

Nurses Club '58-'60, Science Club '59-'60, Library Club '59-'60.

10913

NORA HUNTOON

Glee Club '57-'58, F.T.A. '57-'60, Secretary Senior Class '60, National Honor Society '60.



WANDA JACOBS

F.H.A. '58-'59.

MARGARET JAMES

F.H.A. '57-'59, Nurses Club '58-'60, Pep Club '58-'59.



JEWEL JOHNSON

F.H.A. '57-'58.

ELIZABETH JUDGE

Glee Club '57-'58, Pep Club '58-'59, F.T.A. '57-'60, Library Club '59-'60.



MARTHA KEETON

BERTHA LEWIS

F.H.A. '56-'58, Nurses Club '58-'59.



TOMMY LEWIS

Band '54-'60, Pep Band '59-'60, Science Club '58-'60, National Honor Society '60.

BOBBIE LOYD

Annual Staff '59-'60, Pep Club '58-'59, Glee Club '57-'58, Nurse's Club '58-'59.



HELEN MARTIN

F.H.A. '57-'58, Nurses Club '58-'59, Glee Club '56-'57, Pep Club '59-'60.

ALVIN MATTHEWS



F. H. A. '57-'58, Secretary '59-  
Football '57-'58.

HELEN MORROW



Student Council '56-'57, Glee  
Club '58-'59.

SANDRA MURRAH



Council, Band '56-'57,  
F. H. A. '57-'60, President '58-  
Secretary, Treasurer of  
Class, Wildcat Staff '54-  
Pep Club '58-'60, F. H. A.  
Annual Staff '59-'60,  
Club '58-'59, National  
Society, Alt. Miss F. H. A.,  
Teen Board, Chairman  
Career Day, Library '56-'57,  
Who's-Most Courteous.



TIM MC COY

Pep Club '59-'60, Band '56-'58.

HAROLD NEWELL



'57-'59, "S" Club '57-  
Student Council '56-'57.



MARY NEYMAN

Feature Writer '57-'58, Librar-  
ian '57-'58, F. T. A. '59-'60,  
Boca Ciega Choir '58-'59,  
Foreign Language Club '58-  
'59, Senior Science Club '59-  
'60, Pep Club '59-'60, Library  
Club '59-'60, Transferred  
from St. Petersburg, Florida.

MARGARET ODOM



Club '52-'55.



JERRY PACE

F. F. A. '57-'60.

LINDA PAGE



Annual Staff '59-'60, Pep Club  
'59-'60, Nurses Club '57-'58,  
F. H. A. '57-'60, Vice-President  
'59-'60, Reporter '57-'58, Rep-  
resentative to Montevallo '59,  
State Homemaker Degree '59,  
Alternate Miss F. H. A. '60,  
Who's Who's '60.

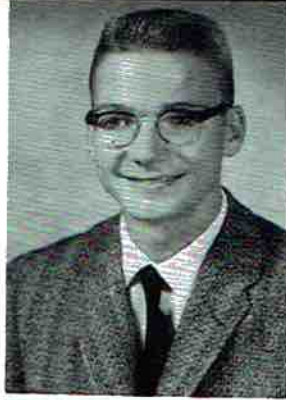


JIMMY PHILLIPS

Pep Club '59-'60, Science Club  
'58-'59.

STANLEY PICKLES

Library Club '59-'60, Pep Club '59-'60.



JACKIE PORCH

National Honor Society '59-'60, Cheerleader '59-'60, Pep Club '58-'60, Vice-President '58-'59, Science Club '58-'60, Treasurer '59-'60, F. T. A. '58-'60, Secretary '59-'60, Student Council '58-'59, Office Assistant '58-'59, "S" Club '59-'60, Advertising Manager of Annual Staff '59-'60, Editor Wildcat '59-'60.

JOHN PRECISE

F. F. A. '57-'60.



LEON PRECISE

"S" Club '58-'60, Pep Club '59-'60, Basketball '54-'60, Baseball '54-'60.

JIMMIE PRITCHETT

F. H. A. '57-'58, Library Club '59-'60.



TOMMY PROCTOR

F. F. A. '58-'60, 4-H Club '53-'55.

BRENDA REED

F. H. A. '57-'58, Library Assistant '57-'58, Hall Marshall '58, Fashion Show '57.



MAC ARTHUR SANDERS

F. F. A. '57-'60, 4-H Club '53-'56.

JOAN SELVAGE

Wildcat Staff '59-'60, Glee Club '57-'59, F. H. A. '57-'58, Nurses Club '58-'59, Library Club '59-'60.



MARY JO SHARP

F. H. A. '56-'60, Pep Club '58-'60, Office Assistant '58-'60.

FREDDIE SHERRELL

Band Club '59-'60, Pep Club '59-'60, F.F.A. '59-'60.



MARTHA SMITH

Pep Club '58-'59, F.H.A. '57-'58, Nurses Club '58-'59, Office Assistant '58-'60, Library Club '56-'58.

GERALD STONE

Band '54-'58, Annual Staff '59-'60, Pep Club '59-'60.



HOWARD TALKINGTON

KENNETH THRASHER



HAZEL RUTH THURMAN

May Queen Attendant '56-'57, Secretary and Treasurer, Student Council '57-'58, Library Club '57-'58, Wildcat Staff '57-'58, Reminder Staff '57-'60, F.T.A. '57-'60, Student Council '58-'59, F.H.A. '58-'59, Office Assistant '58-'60, Glee Club '57-'58.

CAROLYN TRAVIS

Library Club '54-'55, Cheerleader '57-'59, Head Cheerleader '59-'60, Wildcat Staff '59-'60, Annual Staff '54-'56, F.T.A. '57-'60, Pep Club '58-'59, "S" Club '58-'60, Homecoming Attendant '58-'59, National Honor Society '59-'60.



CALVIN VENABLE

F.F.A. '58-'60.

SAMMY WALLINGSFORD



WILBOURN WARREN

F.F.A. '57-'58, D.O. Club '59-'60.

EDITH WEBB

F. H. A. Historian '59-'60, F. H. A. '57-'60.



PAUL WEBB

Football '55-'59, "S" Club '55-'60, Sportsman's Club '59-'60.



DAVID WEEKS

Glee Club '56-'59, Sportsman's Club '59-'60.



SHIRLEY WILKERSON

Glee Club '57-'59, Pep Club '58-'60, Nurses Club '58-'59.



MARTHA WOODALL

Junior Homecoming Queen '54, Majorette '55-'59, Twirler '57-'59, Flag Bearer '55, Band '54-'59, F. T. A. '59-'60, Pep Club '58-'60, Homecoming Attendant '59, Who's Who, Neatest '59-'60, Wildcat Staff '57-'60, Feature Editor '57-'60, Student Council '59-'60, Annual Staff '59-'60, Class Editor '59-'60, Office Assistant '59-'60.



BILL WOOD

Football '54-'60, "S" Club '56-'60, Captain Football Team '59-'60, Student Council '59-'60, President Senior Class '59-'60, Flag Raiser '59-'60, Outstanding Line-man '59-'60, Basketball '55-'58.



DOYLE WORD

F. F. A. '56-'58, Science Club '58-'59, Sportsman's Club '59-'60.



DAVIS WORLEY

Boy's State '59, National Honor Society '60, Basketball '54-'60, Baseball '59-'60, Science Club '58-'60, Pep Club '59-'60, Sports Editor Wildcat Staff '59-'60, Who's Who, Most Likely to Succeed '59-'60, Office Staff, Band '54-'60, Secretary-Treasurer Band '59-'60, Pep Band '58-'60.



# Last Will And Testament

WE, THE SENIOR CLASS OF SCOTTSBORO HIGH SCHOOL, CITY OF SCOTTSBORO, COUNTY OF JACKSON, AND STATE OF ALABAMA, BEING OF SOUND MIND AND MEMORY, DO HEREBY MAKE, PUBLISH, AND DECLARE THIS TO BE OUR LAST WILL AND TESTAMENT.

- We, George David Adams, Billy Ray Davis, and Billy Arnold will our love of a good time to Raymond Pendergrass, Jimmy Beason, and Howard Stewart.
- We, Doyle Word, Rayford Allen, and Glynn Derrick will our lead foot on the accelerator to John Frank Armstrong and Doug Green.
- I, Glenda Bishop leave my place as head majorette to some lucky Junior Majorette.
- We, Alvin Matthews and Tommy Ashmore will our sense of humor to R. C. King, Jerry Wynn, and Sammy Woosley.
- We, Mickey Bell, Bill Wood, and Harold Newel will our love of football to Don Benningfield, Bob Derrick, and Aubrey Machen.
- I, Wilda Bellomy will my love of Ford cars to Mary Melton.
- We, John Blackwell and Jerry Gist leave our good looks to Charles Dawson, Ronald Rogers, and Phil Dutton.
- We, James Bradford and Terrel Clemons leave our black hair to Earl Reed, and Julian Shelton.
- I, Kenneth Bradford leave my walk to Don Trammel.
- I, Linda Bryant will my love of short boys to Carolyn Womack, Wilma Lusk, and Jennie Ruth Richie.
- I, Vera Carter leave my neatness to Elizabeth Dolberry, Barbara Bankston, and Jean Coplin.
- I, Geraldine Chandler will my winning ways to Carolyn Hancock, Mary Ann Harris, and Kathleen Holt.
- I, Judy Clemons will my personality to Joyce Luttrell, Celeste Chambers, and Louise Sisk.
- I, Dorothy Cornelison will my laugh to Joyce Gentle, Charlotte Rudder, and Mary Clyde Gray.
- We, Frances Daniel and Edith Webb leave our place in Home Economics to Addie Phillips and Ann Nevils.
- I, Calvin Venable leave my study hall to Jackie Martin, and Jerry Rodgers.
- I, Sammy Wallingsford will my shyness to Ray Dunn, Paul Cornelison, and Billy Deerman.
- I, Shirley Wilkerson leave my curly hair to Marjorie Blackwell, Patricia Keel, Veda Warren, and Carolyn Keel.
- We, Paul Webb and Bill Beard leave our bright remarks to Jerry Baker, and Johnny Johnson.
- We, Faye Edmonds and Billy Ruth Gentles will our sweet ways to Ruby Guinn, Jackie Grider, Martha Whitehead and Ruby Lee Proctor.
- We, John Precise and Tommy Proctor leave our serious nature to Sonny Hodges, and James Austin.
- We, Ruby Edwards and Margret James leave our place in D. O. to Carol Smith and Fannie Batey.
- We, Jimmy Phillips and Billy Zake Gross will our gift for gab to Vinson McClendon and John Darnell.
- I, Billy Jean Farr leave my Trig book to Mike Goldston and Elizabeth Shofner.
- I, Jimmie Prichett leave my freckles to Barbara Weeks and Mary Elizabeth Shelton.
- I, Kay Finny will my blush to Peggy Gentle, Sue Bradford, Carolyn Bellomy, and Tommie Womack.
- I, Joan Selvage leave my worn out typewriter to Betty Jean Gullatt, Wanda Phillips, and Carolyn Roach.
- I, Holland Floyd will my love of basketball to Larry Nevils, Jimmy Griggs, and Kelly Goodowens.
- I, Phillip Green will my smile to Larry Hancock and Eugene Lewis.
- We, Mary Jo Sharp, and Bobby Jean Haynes will our shortness to Carolyn Hodges and Anne Baker.
- I, Alice Hastings will my sweet personality to Bettye Irvine, Louise Edmonds, and Helen Keller.
- I, Freddie Sherril, will my love for younger girls to Billy Earl Schultz.
- We, Glenn Holt and Howard Talkington leave our unfinished homework to Douglas Brown, Hershel James, and Vester Potter.
- We, Martha Smith, Wanda Allen, and Helen Morrow will our quiet ways to Judy Wilkerson and Gay Nell Thomas.
- I, Nora Huntoon will my scholastic ability to Donna Jo Holder.
- We, Gerald Stone and Tommy Lewis will our neatness to Harry Hancock, Larry Hood, and Kenneth Atkins.
- We, Wanda Jacobs and Jewel Johnson will our shyness to Lilly Dunn, Virgin Guthrice, and Linda Vaught.
- We, Kenneth Thrasher and Davis Worly leave our studious ways to Bobby Atkins, Neal Bolding, and John Pepper.
- I, Elizabeth Judge will my class ring to Doris Shelton, Sarah Roden, and Alice Poland.
- I, Hazel Thurman will my ability to flirt to Rosalie Maples, Carol Keeble, and Martha Campbell.
- I, Bertha Lewis leave my wink to Elaine Wilson and Annie Carlton.



# Last Will And Testament

- We, David Weeks and Lynn Derrick leave our flat-top to Rayburn Selvage, Jerry Atkins, Bill Procter, and Charles Wallingsford.
- I, Tallulah Cunningham will my ability to put my foot in my mouth to Jo Pell Brandon, Ruth Bryant, and Lyle Hass.
- I, Tom George leave my place in D. O. to Billy Martin and Roy Venable.
- We, Jerry Pace, Marvin Cornelison, and Wilbourn Warren will our disregard of booklearning to Jimmy Kent, Bill Walden, Buddy Berry, and Billy Johnson.
- I, Helen Martin leave my ability to forget poems as fast as I learn them to Linda Cordell, Paula Chambers, and Peggy Hall.
- I, Ross Davis will my dancing ability to Shiles McCord.
- I, Linda Page leave my voice to Mary King.
- We, Tim McCoy and Lee Harrington leave our ability to bother teachers to Barney Brooks and Milo Harper.
- We, Doyleene Hooper, and Bobby Loyd will our long blond hair to Elizabeth Wilson, Louise Phillips, and Bettye Watson.
- We, Sandra Murrah and Ann Hess will our smile to Billie Ann Sebring, Bernice Latham, and Sandra Rudder.
- I, James Byrd leave my great muscles to Wendell Dudley, Jerome Dean, and Jack Owens.
- I, Mary Neyman leave my inquisitive expression to Shirley Traylor, Gladys Kindred, and Barbara Brandon.
- I, Walter Dodson leave my place in Ag. to Ronald Hammond, Bobby Hammonds, and Sammy Arnold.
- I, Carolyn Travis will my place as head cheerleader to Linda Nell Shelton, Jill Porch, and Carol Ann Berry.
- We, MacAuthur Sanders and Bobby Arnold will our mischievous ways to Billy Johnson, Tommy Brown, and John Talley.
- I, Jimmy Gross will my enthusiasm for radios to Kenneth Manning.
- I, Martha Woodall will my ability to make friends to Cathrine Keel, Pasty Derrick, and Frances Edge.
- I, Jackie Porch leave my place as Editor of the Wildcat to some lucky Junior.
- I, Stanly Pickles will my manners to Gary Crawford, Larry Wallingsford, and Harry Hancock.
- I, Margaret Odom leave my athletic ability to Brenda Perry and Patricia Elliott.
- I, Tommy Armstrong will my place as Editor of the Annual to some lucky Junior.
- We, Brenda Frazier and Charles Heath leave the Last Will and Testament to some unlucky Junior.

## Senior Prophecy

"Twas the night before graduation, and all through the town, Not a Senior was sleeping--visions in their heads were flashing around, Visions of the future, and what they would be. Everyone was dreaming, even we. When all of a sudden, from behind future's veil, A genie, beckoning to us, we beheld. Taking us by the hand, a journey into the future we took; Come with us, and at a scene from each Senior's future, together we'll look.

We see that Kenneth Thrasher and Zack Gross have gone into business together; They make chewing gum out of worn-out shoe leather. It is said that they'll stay at this task Just as long as the flavor will last.

Linda Page, who was noted for her laughing disposition, Now stars on the Grand' Ole Opry in Minnie Pearl's position.

Davis Worley, a great and wealthy salesman is he, Sells toothpaste with that miracle-magic new ingredient, M-U-D.

Frances Daniel's life is really full of joy, She finally has her own little boy. The way he winks and flashes that grin, He has baby-blue eyes, dark hair, and is only five feet ten.

Hazel Thurman and Edith Webb have really been on the scene, the clothes in this town are always clean because of the Thurman-Webb Washing Machine.

Linda Bryant, whose favorite color was pink, is a home-owner who has everything in that color, even her kitchen sink.

Though in the Boy Scouts, Leon Precise wouldn't be very hot, He's a Justice of the Peace, and ties a dandy knot.

Doyleene Hooper, Harold Newell, and David Weeks--scientists of great reknown, beclare that a freckle-remover cannot be found; but at other discoveries they are really a whiz--They even perfected a soda pop that's nothing but a fizz.

# Senior Prophecy

When it came to working, Charles Heath was never inferior; he is now the assistant manager of a salt mine in Siberia.

Beautician Joan Selvage has customers by the oodles; she even goes to the White House to fix the hair of the President's poodles.

We see that Ruby Joyce Edwards is certainly in a flutter---hubby just tried to feed 2 weeks-old Jr., a spoon of peanut butter.

Sandra Murrah has become such a celebrity that to her, Elvis is a bore; Yesterday, when he asked her for an autograph, she kicked him out the door.

Gerald Stone and Doyle Word are Senators of great reknown; they speak their piece on the Senate floor and then go "do the town."

Lynn and Glynn Derrick are prosperous and their bankroll is fat; they sell accident insurance to owners of black cats.

Of tact and diplomacy U.S. Ambassador, Geraldine Chandler has no lack; she recently told King Saud that his waistline needed 12 inches of slack.

Terrel Clemons is a mechanic and has become a real ball of fire Since someone pressed the starter while he was holding a spark-plug wire.

Congressman Billy Ray Davis, in speaking for his new bill, has almost burst his lungs. It provides for a limit on the time that women can wag their tongues.

Telephone operator, Elizabeth Judge, is heartily in favor of this clause; women keep her lines so busy, she'd like to lock their jaws.

Judy Clemons, Margaret James, Margaret Odom, Brenda Reed, Bertha Lewis, Ann Hess and Wanda Jacobs are housewives evermore. Though the usual burned biscuits, skinned knees, torn pants, runny noses, and troubles galore keep their days in a 24 hour whirl, they're seven of the happiest girls in the world.

Martha Keeton, also a housewife now, for cups and saucers to a lot of money says ahoy. She uses them on Saturday night to throw at hubby Roy.

If it's marriage you want and if you can afford, then go to Phillip Green's marriage board. Every couple that visits him leaves in sweet accord.

A new lovelorn advisor in town, she's really makin' a hit; Vera Carter is the girl--stop in and see her a bit.

Jerry Pace, Mickey Bell, John Precise, Tommy Proctor, and MacArthur Sanders--these boys have excellent taste; They test the brew at the factory that makes tomato paste.

Bily Arnold and Glenn Holt joined the Air Force because they heard that it was easy as easy could be. They are now the best potato peelers and dishwashers that have ever been on K. P.

Tommy Ashmore joined the Army, and it's rumored that pretty soon He's going to be another Sergeant Bilko in his platoon.

Bobby Ann Loyd, who had such a fine way and manner, Is now a fashion editor for the Fackler Daily Banner.

Jimmy Phillips, Freddie Sherrel, Wilburn Warren, and Marvin Cornelison are men of high regard. They are managers of a shortening factory--great sellers of lard.

At his inattentive music students Bandmaster Ross Davis sometimes shouts; But his keen instruction they couldn't do without.

Jimmy Gross is a Texas millionaire because of oil, But he gets it from castor beans and not from the soil.

Are any of you getting thirsty as through the future we zoom? Then let's stop at the Dairy Queen that Bobby Haynes has built on the moon.

Speaking of planets, Paul Webb has a farm on Mars, And Calvin Venable and Tim McCoy have opened a grocery store on each of the stars. The space-patrol almost arrested them the other day; They were selling milk from the Milky Way.

Good Citizenship Girl Glenda Bishop is fighting for world peace with all her might. She has recently written a book for men entitled, "The Woman is Always Right."

President bound since he was born, Howard Talkington said he'd rather become a Frosty Morn.

Kay Finney, who wanted to study health and anatomy, Has accepted instead an appointment to West Point Academy.

# Senior Prophecy

Well, well, here is Bill Wood, the sweet little guy, He's milking cows at API,

Dorothy Cornelison, who was always so sweet and kind in every feature, Has been voted the Post Herald's Favorite Teacher.

Helen Morrow, now in Michigan, is a prominent figure in Ann Arbor; She's really keeping the population in trim, for she's their only barber.

Lee Morris Harrington is a radio-news reporter in the Middle East; He covers everything from wars to the signing of an oil lease. The Communists captured him, but held him only a day; To keep from going crazy, they sent him home with pay.

Alice Hastings has a job that could become quite a bore; You see she sells sea-shells at the seashore.

George David Adams and Tommy Armstrong are making money by the tubs; They auction off flash lights to de-lighted lightning bugs.

Kenneth and James Bradford are making money by the stacks. They work for Uncle Sam, collecting income tax.

Rayford Allen and Tom George have a job that's really a pip; They drive chartered buses for Seniors on their trips. In all the confusion and calls We wonder they can drive at all.

Nurses Shirley Wilkerson and Jewell Johnson in their first operation did fail. They removed an on-grown toe instead of an in-grown toe nail. They carry most of their patients to the town morticians, Jerry Gist, Billy Farr, and Sammy Wallingsford. Jerry is out "running down" some business now, so they won't be sunk; In the last four weeks, their only work was on a dead pet skunk.

When it came to music, Mary Neyman was a real hum-dinger. Now she has her own T.V. show and is a famed calypso singer.

Brenda Frazier is now a waitress, and apparently always on the go; But for slow service she can't be outed; When you finally get your vegetable plate, the beans have already sprouted.

John Blackwell, who was outstanding in sports, Has recently appeared before the courts. A ball that he knocked out of Yankee Stadium Broke a window in the judge's palatium.

Getting away with crime is certainly no cinch. Not when Judge Holland Floyd is sitting on the bench. For tearing up his wife's new rug, He gave his puppy three days in the jug.

Carolyn Travis is a stewardess for TWA airline; She's constantly on the go all of the time. On her first flight, however, she was really a sight--Her face changed colors so, they thought she was a traffic light.

Two hot-drivers in high school were Walter Dodson and James Byrd. Now racing at Indianapolis, I'm sure you've heard. Their last race was the greatest by far, They broke 10 MPH in their souped up pedal car.

Though she really makes her subjects toe the line, Martha Lou Woodall is the Queen of Sheba and likes it very fine.

Bobby Arnold and Alvin Matthews now have their own service station; Their new gas, H<sub>2</sub>O has created quite a sensation.

Jerry Marlowe is still doing the thing he loves best; The quartet he's singing in, you'll never guess.

There was an Old Man with a beard Who said, "It is just as I feared, Two Owls and a Hen Four larks and a Wren, Have all built their nests in my beard."

Now wouldn't you know it. Nora Huntoon has become a poet.

Here we are at the Tuscaloosa Mental Institution---is that Mary Jo Sharp down the hall? Yes, that's her all right--she's the receptionist for one of the nation's best psychiatrists, Dr. Van Vogelweider Screwball.

The kindness of civic workers, Martha Smith and Billy Ruth Gentle, is known through all the land. They're at the seashore now, helping tired Mary Ann sift her sand.

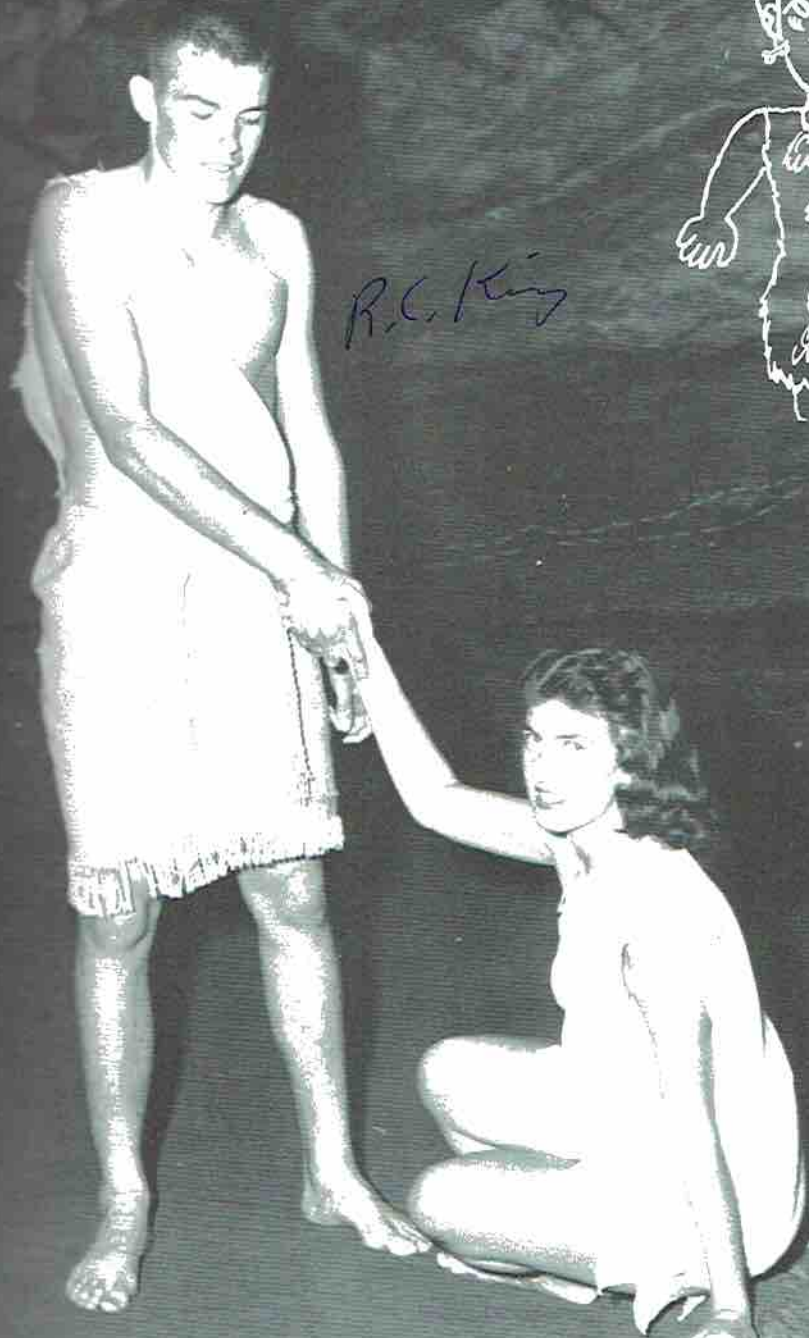
Bill Beard, Tommy Lewis, and Stanley Pickles are drawing funny cartoon strips and oh, Brother! You'll laugh until you rip, for they are drawing each other.

Missionary nurses Wanda Allen, Wilda Bellomy, Helen Martin, Jimmy Pritchett, and Faye Edmonds may everywhere be found; They're spreading Christianity the world around. However, things keep them in such a confusion, they don't know whether to give an aspirin or a transfusion.

Then the genie dropped our hands, But we bade him say how our future would stand. To us he answered, "You are Tallulah Cunningham and Jackie Porch I bet; Twelve years in high school and you're not out yet."

# Juniors

But Ma, It's the latest !



*R.C. King*



*D.J.H.*



Homer Ake  
John Frank Armstrong  
Sammy Arnold  
Bobby Atkins



Jerry Atkins  
Kenneth Atkins  
James Austin  
Anne Baker



Barbara Bankston  
Fannie Batey  
Jimmy Beason  
Donald Beddingfield



Carolyn Bellamy  
Buddy Berry  
Carol Ann Berry  
Marjorie Blackwell



Neal Bolding  
Sue Bradford  
Barbara Brandon  
Jo Pell Brandon



Barney Brooks  
James Doug Brown  
Thomas Brown  
Ruth Bryant

Martha Campbell  
 Annie Carlton  
 Celeste Chambers  
 Jean Coplin



Linda Cordell  
 Paul Cornelison  
 Velma Cornelison  
 Gary Crawford



John Darnell  
 Charles Dawson  
 Jerome Dean  
 Bill Deerman



Bob Derrick  
 Patsy Derrick  
 Elizabeth Dolberry  
 Wendell Dudley

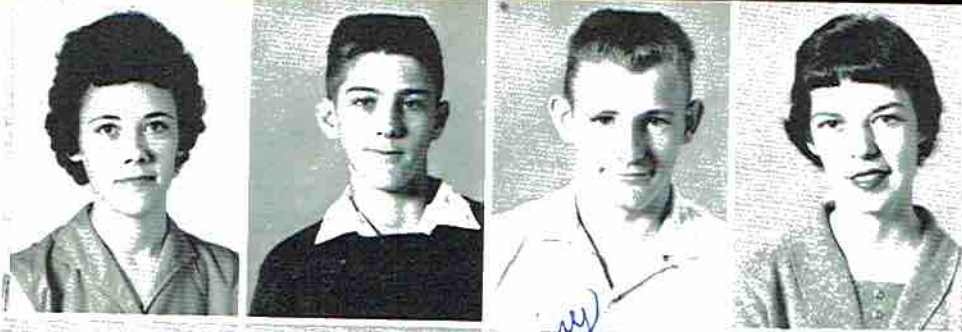


Lily Dunn  
 Nellie Dunn  
 Phil Dutton  
 Frances Edge



Louise Edmonds  
 Patricia Elliot  
 Jane Gentle  
 Joyce Ann Gentle





Peggy Gentle  
Mike Goldston  
Kelly Goodowens  
Mary Clyde Gray



Doug Green  
Jackie Grider  
Jimmy Griggs  
Glenda Guffey



Ruby Guinn  
Betty Jean Gullatt  
Lyle Haas  
Peggy Hall



Bobby Hammonds  
Ronald Hammon  
Carolyn Hancock  
Harry Hancock



Larry Hancock  
Milo Harper  
Mary Ann Harris  
Carolyn Hodges



Sonny Hodges  
Donna Jo Holder  
Betty Jean Irvine  
Herschel James

Kenneth James  
 Billy Johnson  
 Johnny Johnson  
 Jane Judge



Carol Keeble  
 Carolyn Keel  
 Cathryn Keel  
 Patricia Keel



Helen Keller  
 Jimmy Kent  
 Mary King  
 R. C. King



Bernice Latham  
 Eugene Lewis  
 Wilma Lusk  
 Joyce Luttrell



Aubrey Machen  
 Kenneth Manning  
 Stanley Manning  
 Rosalie Maples



Billy Martin  
 Jackie Martin  
 Mary Melton  
 Vinson McClendon







Shiles McCord  
Ann Nevils  
Larry Nevils



Jack Owen  
Raymond Pendergrass  
Brenda Perry



Addie Phillips  
Louise Phillips  
Wanda Phillips



Alice Ruth Poland  
Jimm Porch  
Vester Potter



Bill Proctor  
Ruby Lee Proctor  
Earl Reed



Jennie Ruth Ritchie  
Carolyn Roach  
Sarah Roden

Ronald Rodgers  
Charlotte Rudder  
Sandra Rudder



Bill Schultz  
Billie Ann Sebring  
Rayburn Selvage



Doris Shelton  
Mary Elizabeth Shelton  
Linda Nell Shelton



Julian Shelton  
Elizabeth Shofner  
Louise Sisk



Carol Smith  
Howard Stuart  
John Tally



Gaynell Thomas  
Don Trammel  
Shirley Traylor





Linda Vaught  
Roy Venable  
Billy Walden



Charles



Charles Wallingsford  
Larry Wallingsford  
Veda Ruth Warren



Bettye Watson  
Barbara Weeks  
Martha Whitehead.

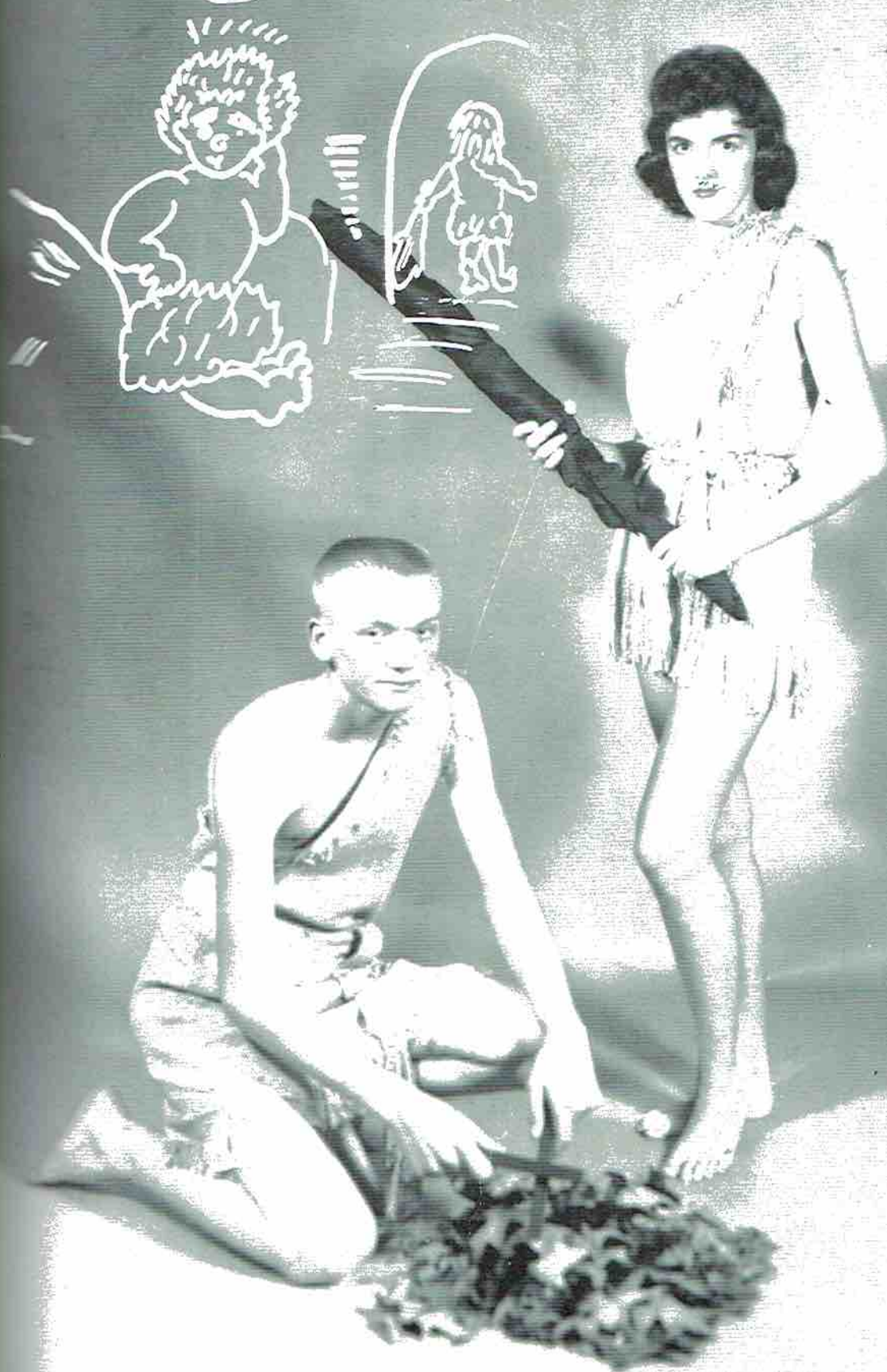


Judy Wilkerson  
Elaine Wilson  
Elizabeth Wilson



Sammy Woosley  
Marvin Wright  
Jerry Wynn

I told her that her stockings were wrinkled and  
she wasn't wearing any.

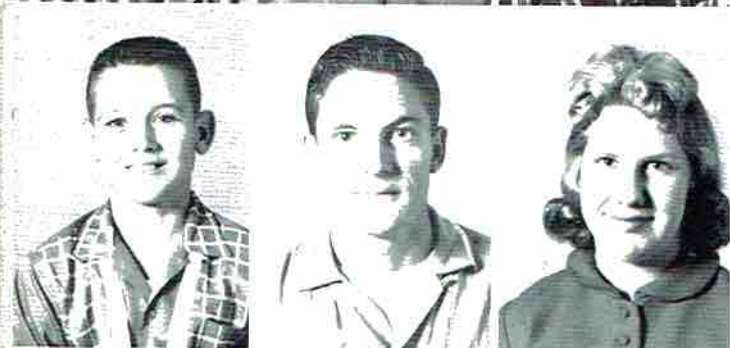




James Adams  
Carolyn Allen  
Howard Allen



Jim Ashburn  
Bobby Baggett  
Jerry Barclay



Wesley Barnett  
Wendell Aubray Batey  
Barbara Bell



Dana Lynn Bennett  
Nathan Black  
Linda Blackwell



Johnny Bradford  
John Brewer  
Carol Sue Bryant



Douglas Bryant  
Randy Bryson  
Roger Carter

Edward Cornelison  
Dora Sue Cowart  
Mary Dell Cowley



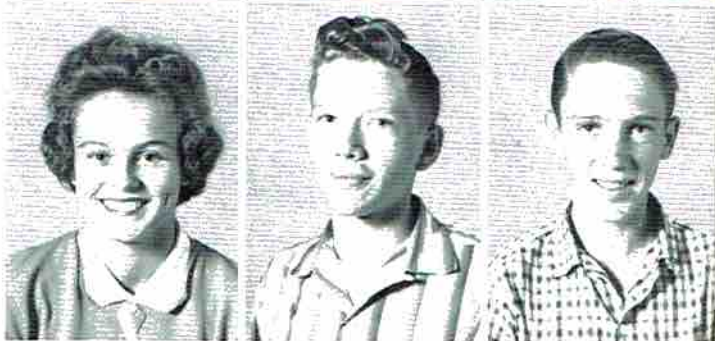
Sadie Bea Cross  
Skippy Cunningham  
Blanche Davis



Erma Lee Davis  
Nita Dawson  
Wade Deerman



Jo Ann Dickerson  
Wendell Dolberry  
Prince Edwards



Benny Farr  
David Fowler  
Brenda Garner



Shelby Geckles  
Joyce Goldston  
Carole Goolesby





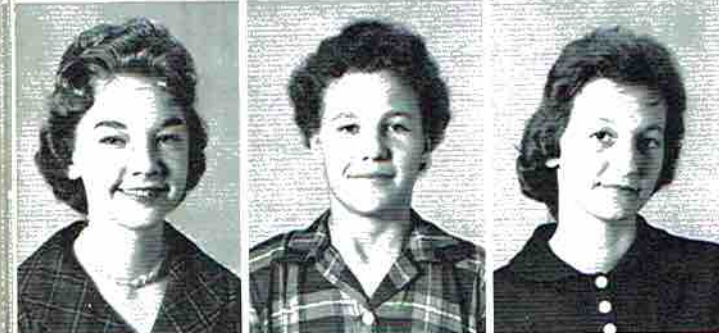
Jackie Green  
Jimmy Green  
Marie Grider



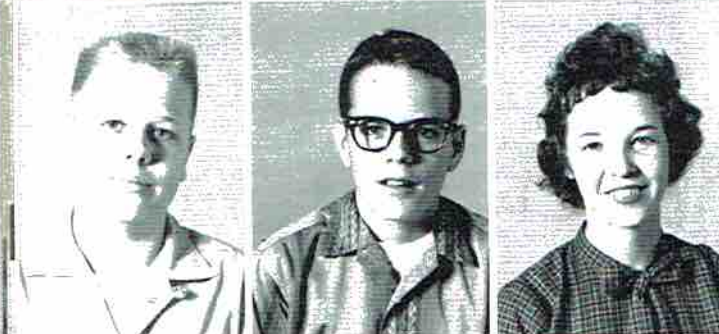
Rayford Guffey  
Carolyn Hall  
Val Hamlin



Brenda Hastings  
Larry Henderson  
Jessie Dell Hicks



Rachel Higginbotham  
Carolyn Hinkles  
Jean Hinkles



Donald Hodges  
Doug Hodges  
Laverne Holcomb



Raymond Holcomb  
Robert Hollis  
David Howell  
*'Chu Chu'*

Judy Hubbard  
Tommy Hurt  
Shirley Jacobs



Faye Jordan  
Cecil Keith  
Joan King



Charles Kirkland  
Sybil Knight  
Virginia Lackey



Allen Lee  
Faye Lewis  
Ann Liles



Buddy Lusk  
Yvonne Lusk  
Alice Sue Manning



Eunice Manning  
Shirley Manning  
Billy Matthews







Shirley Matthews  
Helen McCoy  
Gary McGuffey



Barbara Middleton  
Harvey Miller  
Dennie Mitchell



Sandra Mitchell  
Shirley Mitchell  
Gayle Muse



Harry Ott  
Mary Frances Phillips  
William Phillips



Franklin Poland  
Jimmy Porter  
Clarence Potter



Canna Mae Proctor  
Janice Proctor  
Samuel Proctor

Bobby Reed  
Robert Reed  
Roy Reed



Troy Reed  
Glenda Roberts  
Carol Roden



Kenneth Rogers  
Lillie Sanders  
Sammy Sanders



Nellie Selvage  
Ruby Shavers  
Patsy Sherwood

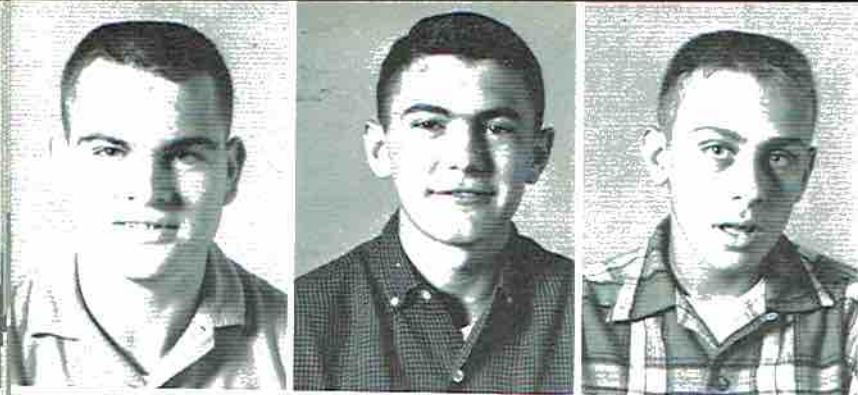


Carol Sloan  
Bobby Southead  
Alvin Stewart



Patsy Stewart  
Thomas Swancey  
Sammy Thomas





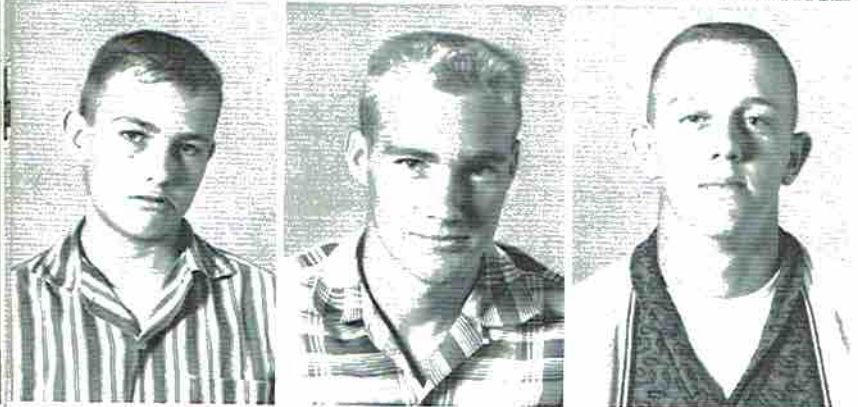
Wayne Treece  
Parks Tubbs  
Larry Upton



Betty Walker  
George Walker  
Vivienne Webb



Thomas Weeks  
James Westmoreland  
Jerry White

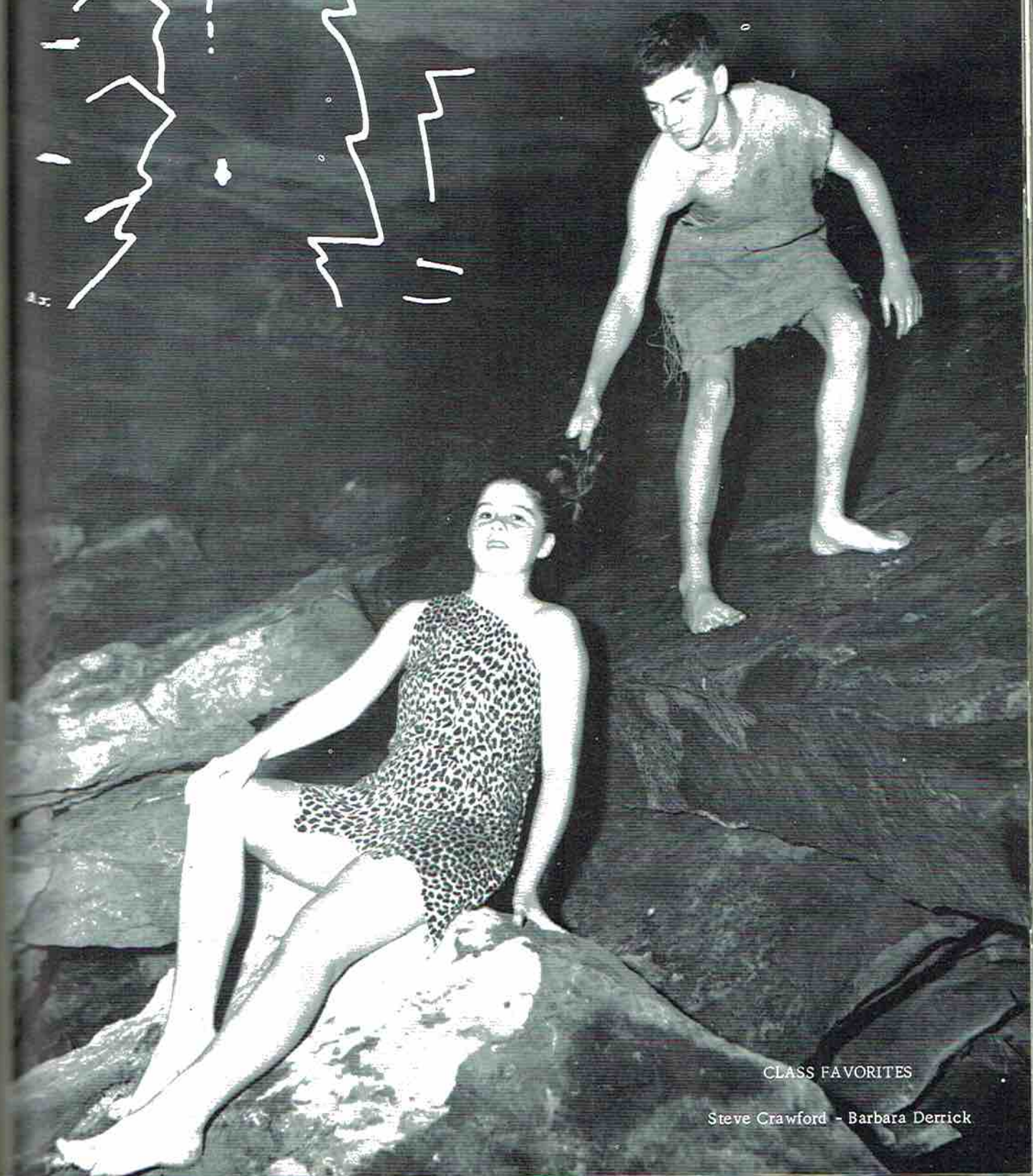


Wayne Willman  
Clyde Wilson  
Wayne Womack



Rita Womack  
Peggy Jo Wynn  
Charles Yarbrough

# Freshmen



CLASS FAVORITES

Steve Crawford - Barbara Derrick



Patricia Adkins  
Betty Allen  
Catherine Allen  
Clay Alspaugh



Kaye Archer  
Leroy Armstrong  
Clyde Arnold  
Mike Ashmore



Elizabeth Bailey  
Kenneth Barclay  
Gloria Barnett  
Linda Bates



Cecelia Beard  
Mildred Bellamy  
Larry Bolton  
Charles Bradford



Raymond Brandon  
Leon Bufford  
Peggy Busby  
Robert Byrd



David Campbell  
Walt Cargile

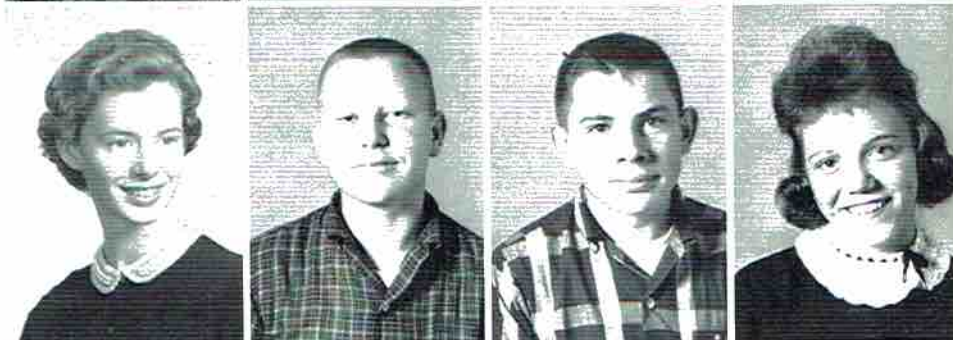
Nancy Clemons  
James Cosby  
Donald Cotten  
Steve Crawford



Phyllis Davis  
Barbara Derrick  
Carol Derrick  
Izzy Derrick



Jerry Derrick  
Ronnie Drummond  
Clabourn Edge  
Carolyn Elliot



James Evans  
Winfred Earl Evans  
Wanda Ferguson  
Gordon "Butch" Foster



Susan Frazier  
Tommy Gardner  
Paulette Gentle  
Annette Grider



Paulette Grider  
Martha Haas





Betty Hall  
Jimmy Harrington  
Shelia Hill  
Glenda Hodges



Rayford Hodges  
Richard Howell  
Shirley James  
Grady Johnson



Dale Jordan  
David Keeble  
Sandra Kenamer  
Bobby Lands



Sharon Lands  
Carl Latham  
Roger Allen Lee  
Kenneth Ledbetter



Betty Liles  
Carolyn Lusk  
Irene Manning  
Carol Maples

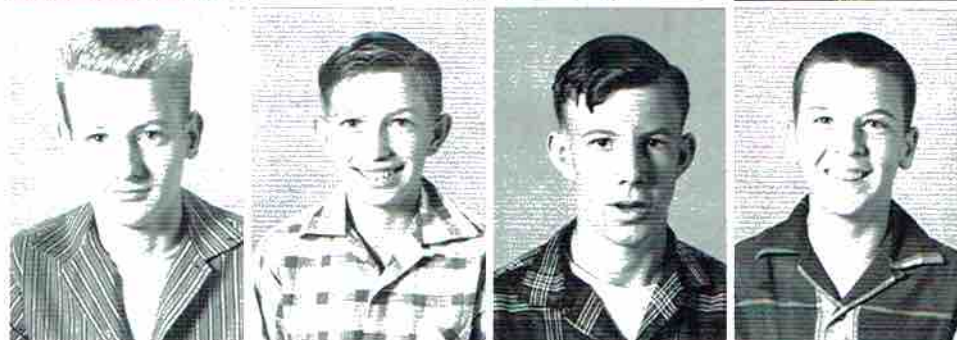


Wade Maples  
Doris Jo Martin  
Ena Martin  
Josie McAllister

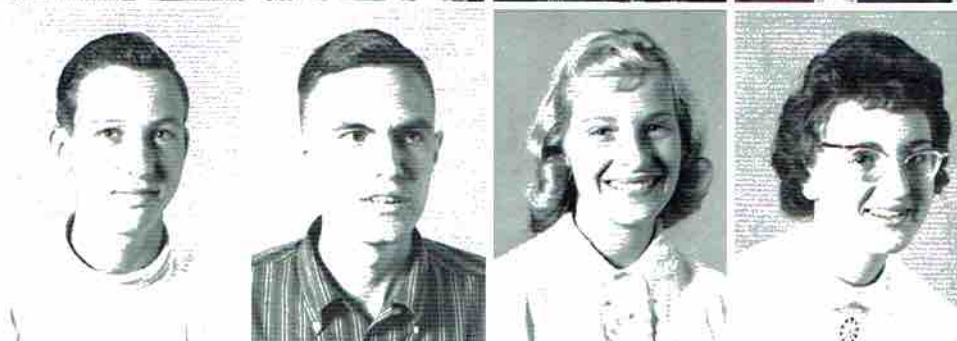
Celestine Metcalf  
 Betty Moore  
 Billy Murrah  
 Loretta Nash



Lewis Pace  
 R. L. Pittman  
 J. B. Potter  
 Joe Power



Charles Ritchie  
 Derwood Rodgers  
 Janith Rodgers  
 Billie Marie Rogers



Ira Sue Rousseau  
 Larry Sanders  
 Nora Lee Sebring  
 Alvie Shelton



Sara Sisk  
 Myra Sloan  
 Donald Smith  
 Jerry Smith



Glenneth Staton  
 Kenneth Staton  
 Carolyn Steeley  
 Sudie Stuart



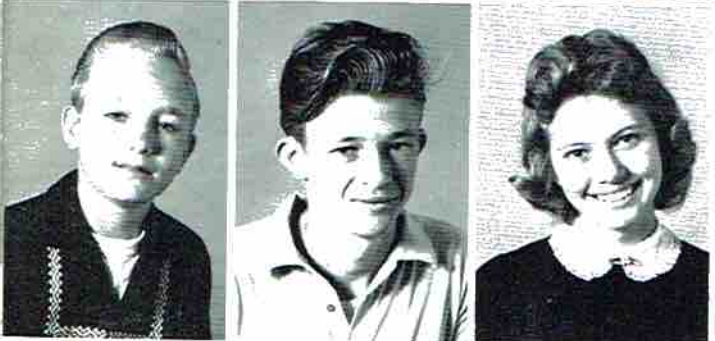




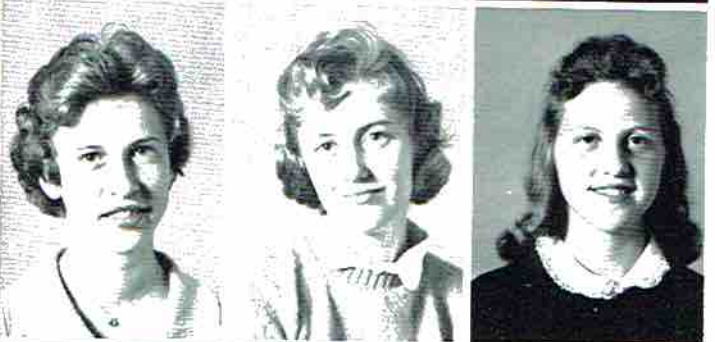
Faye Thomas  
Larry Thomas  
Lynda Thompson



Edith Tidwell  
Joyce Tiffin  
Yvonne Ward



Doyle Weeks  
Wayne Whitehead  
Shirley Wilhelm



Lucy Wilson  
Rebecca Wilson  
Bobbie Nell Womack



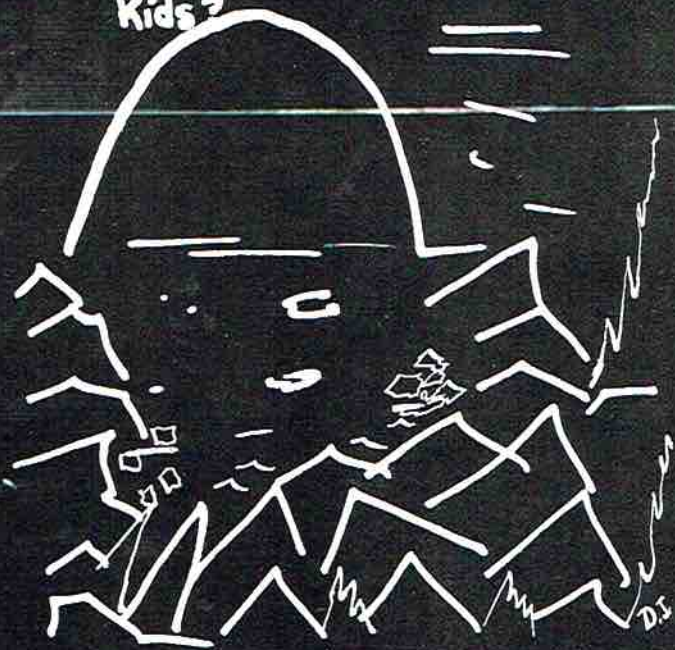
R. C. Womack  
Becky Wood  
Floyd Woosley



Lloyd Woosley  
Jackie Wright  
Elna Vaught

# Features

Wonder why they called  
cavemen the "Dead End"  
Kids?



*Frances*

1957

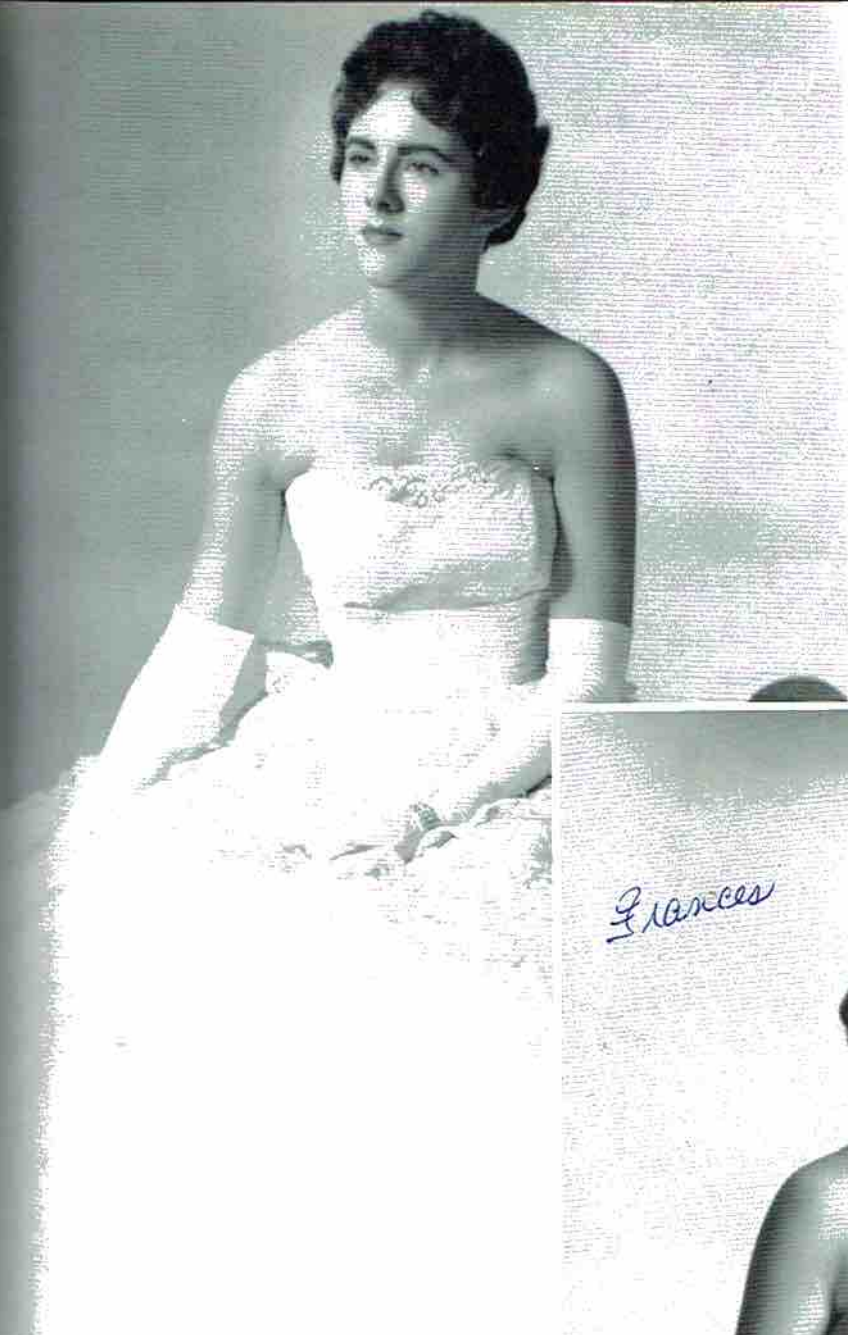


MISS HOMECOMING

GLENDA BISHOP

# Homecoming Attendants

MARTHA LOU WOODALL



FRANCES EDGE



# Homecoming Attendants

REBECCA WILSON



LINDA BLACKWELL



## Miss F.H.A.

JUDY HUBBARD

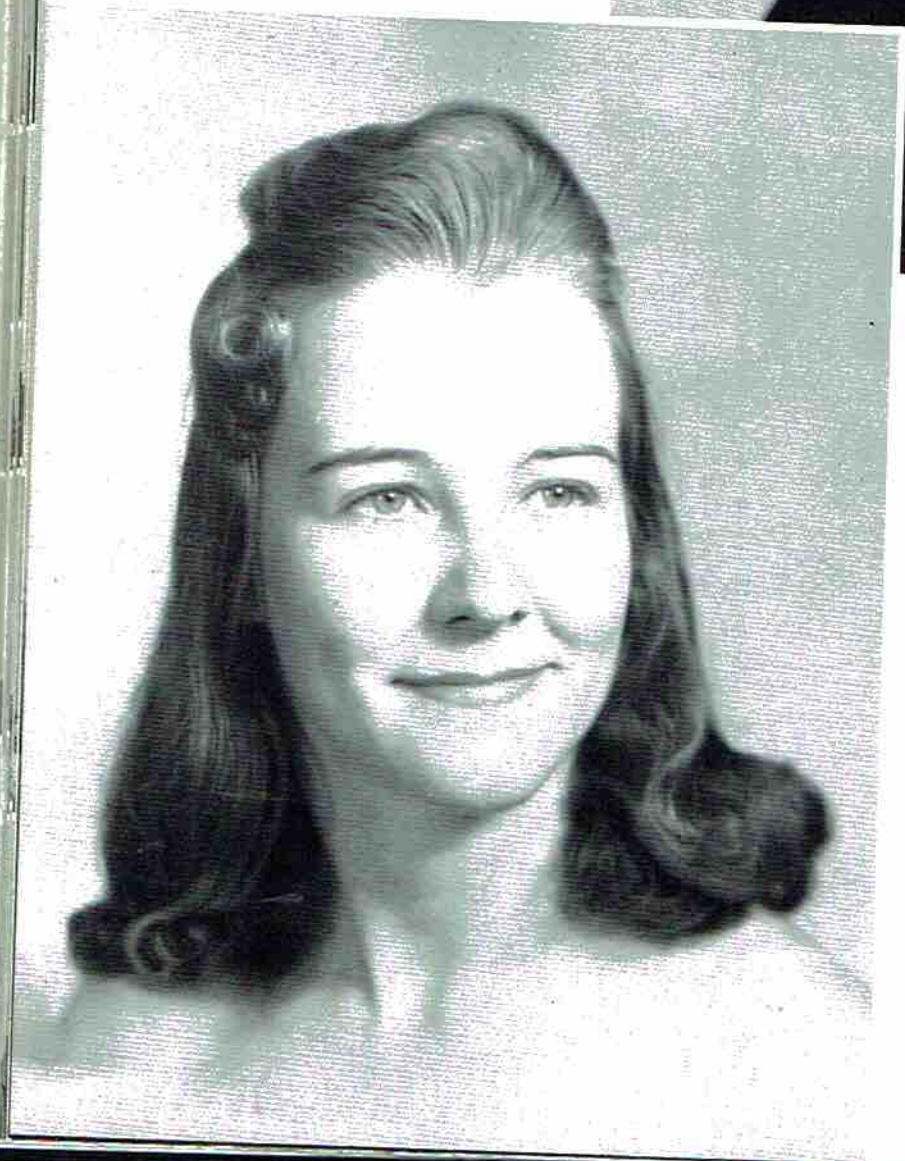
## Alternates

LINDA PAGE - SANDRA MURRAH



**F.H.A.**  
**Sweetheart**

BOBBY ARNOLD



**F.F.A.**  
**Sweetheart**

LINDA BRYANT



## Good Citizenship Girl

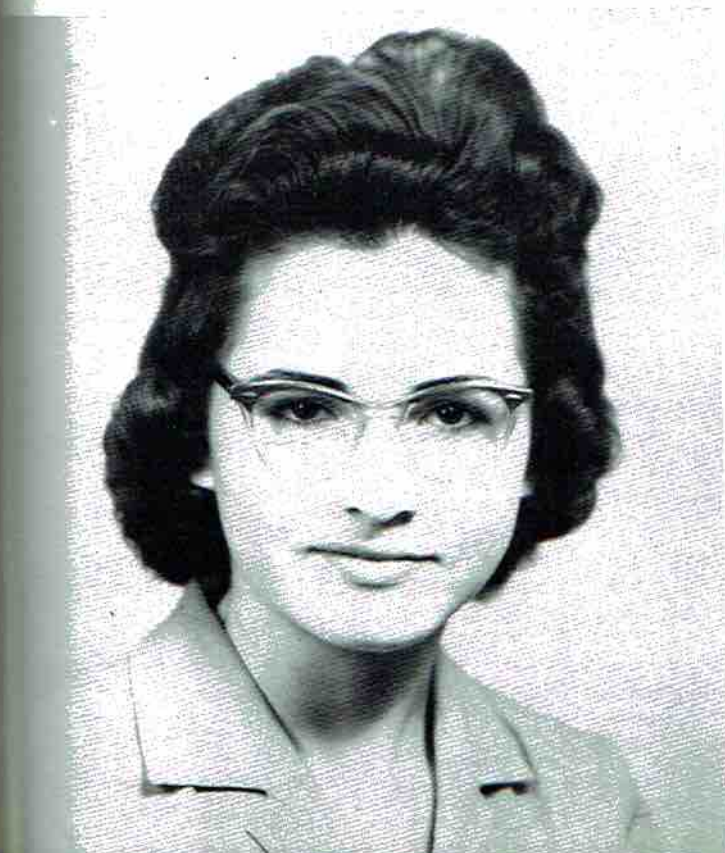
GLEENDA BISHOP



**McCalls**

**Teen Fashion Board**

SANDRA MURRAH



**Betty Crocker  
Homemaker of Tomorrow**

KAY FINNEY

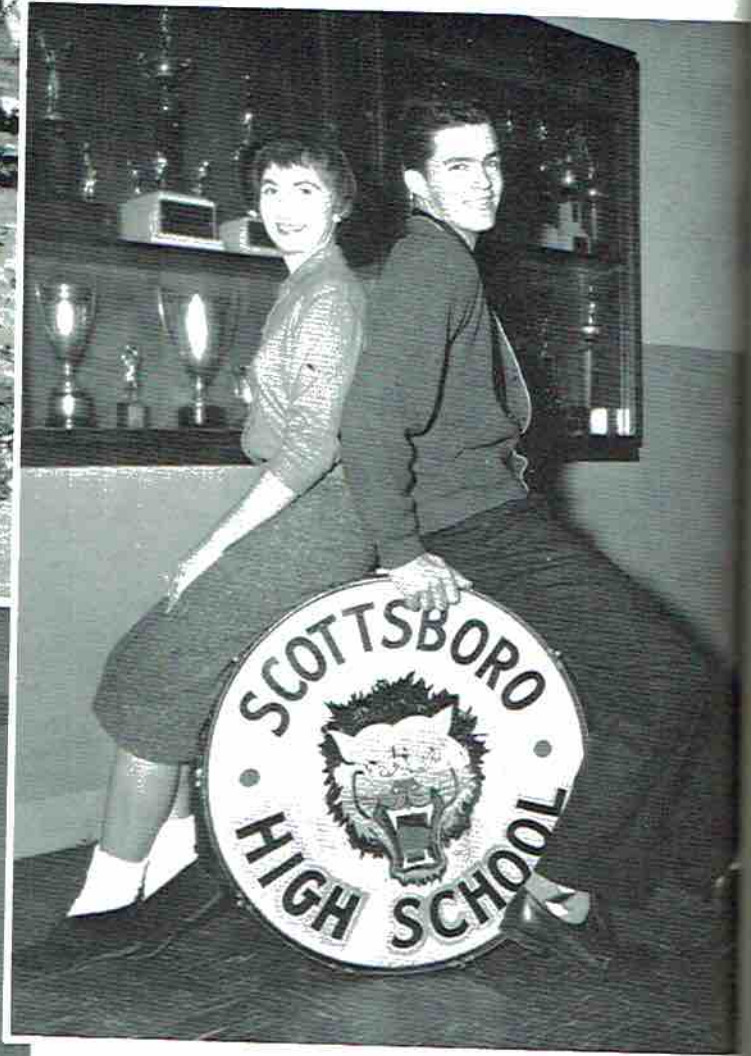


# Who's Who

in the Senior Class

## Most Courteous

Sandra Murrah  
John Blackwell

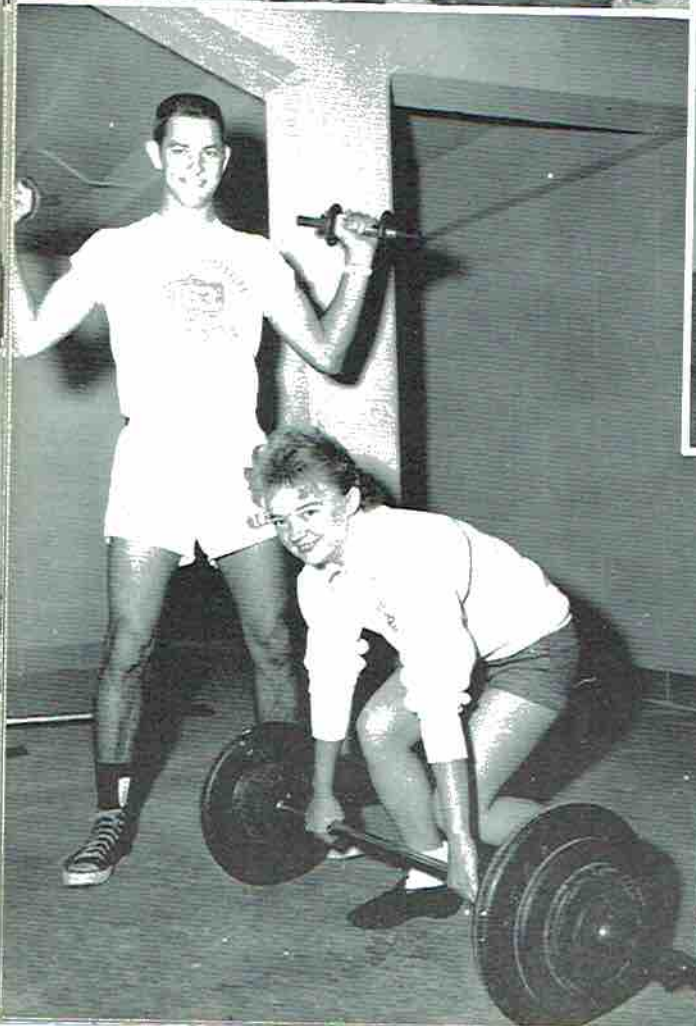


## Best All Around

Jackie Porch  
John Blackwell

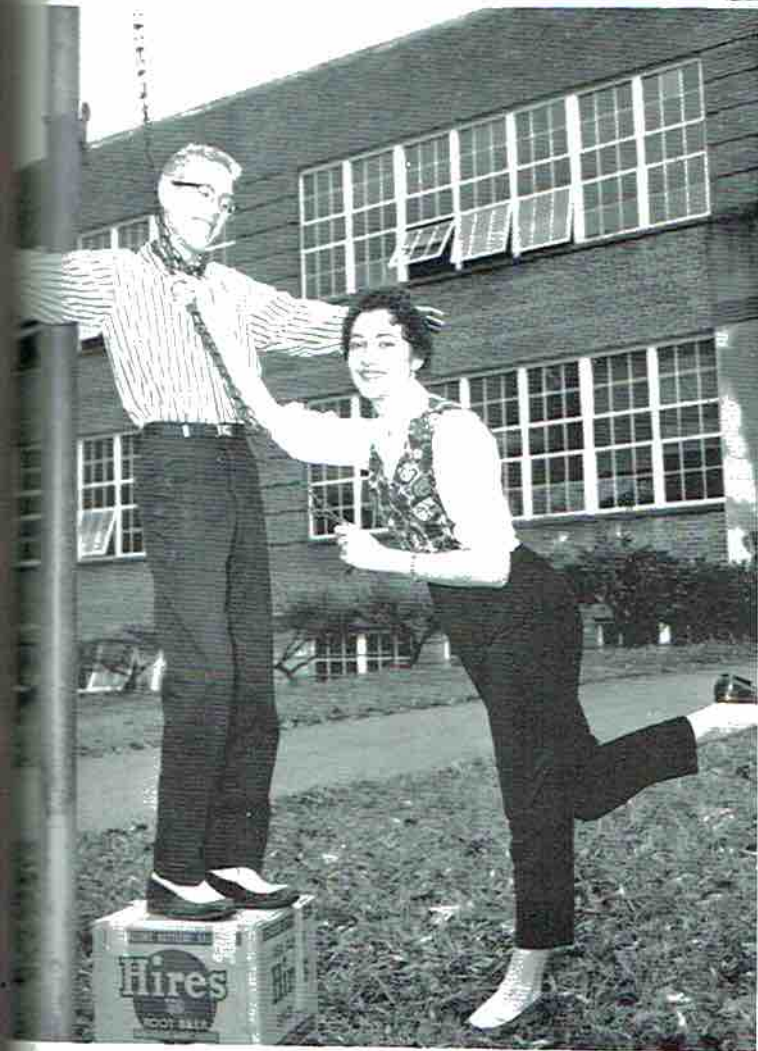
## Most Athletic

Bobbie Haynes  
Mickey Bell



## Wittiest

Linda Page  
Lee Harrington



## Most Likely To Succeed

Nora Huntoon  
Davis Worley

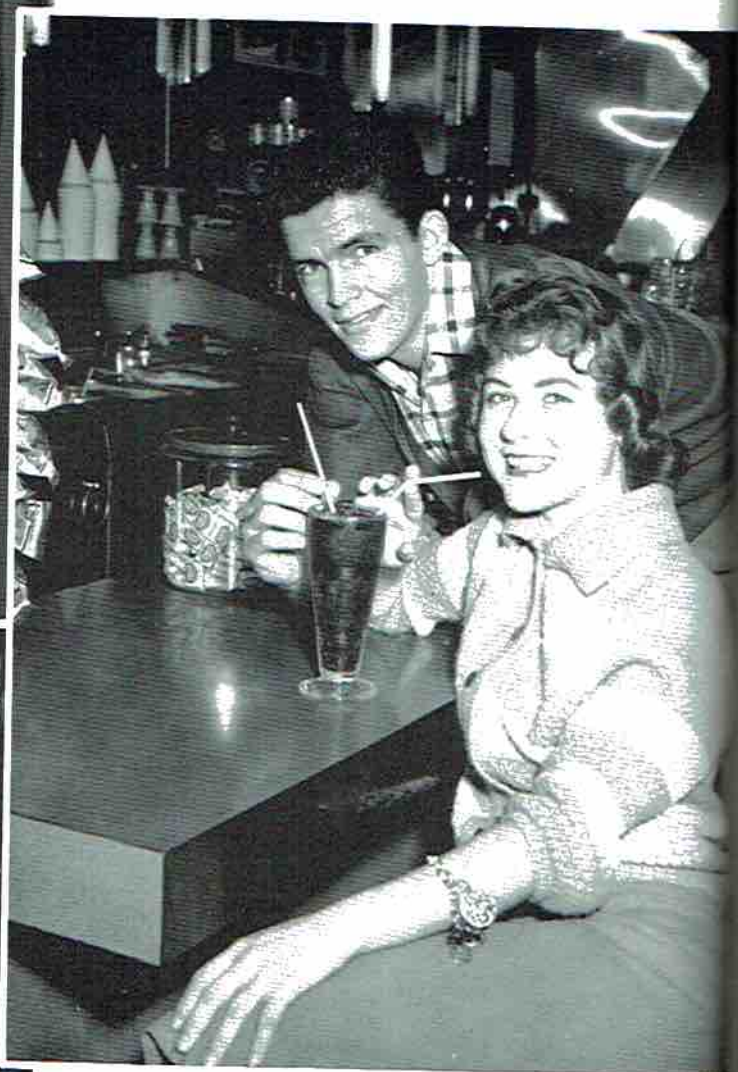
## Friendliest

Jackie Porch  
Ross Davis



## Neatest

Martha Lou Woodall  
John Blackwell



## Most Popular

Glenda Bishop  
John Blackwell

## Prettiest And Most Handsome

Glenda Bishop  
John Blackwell



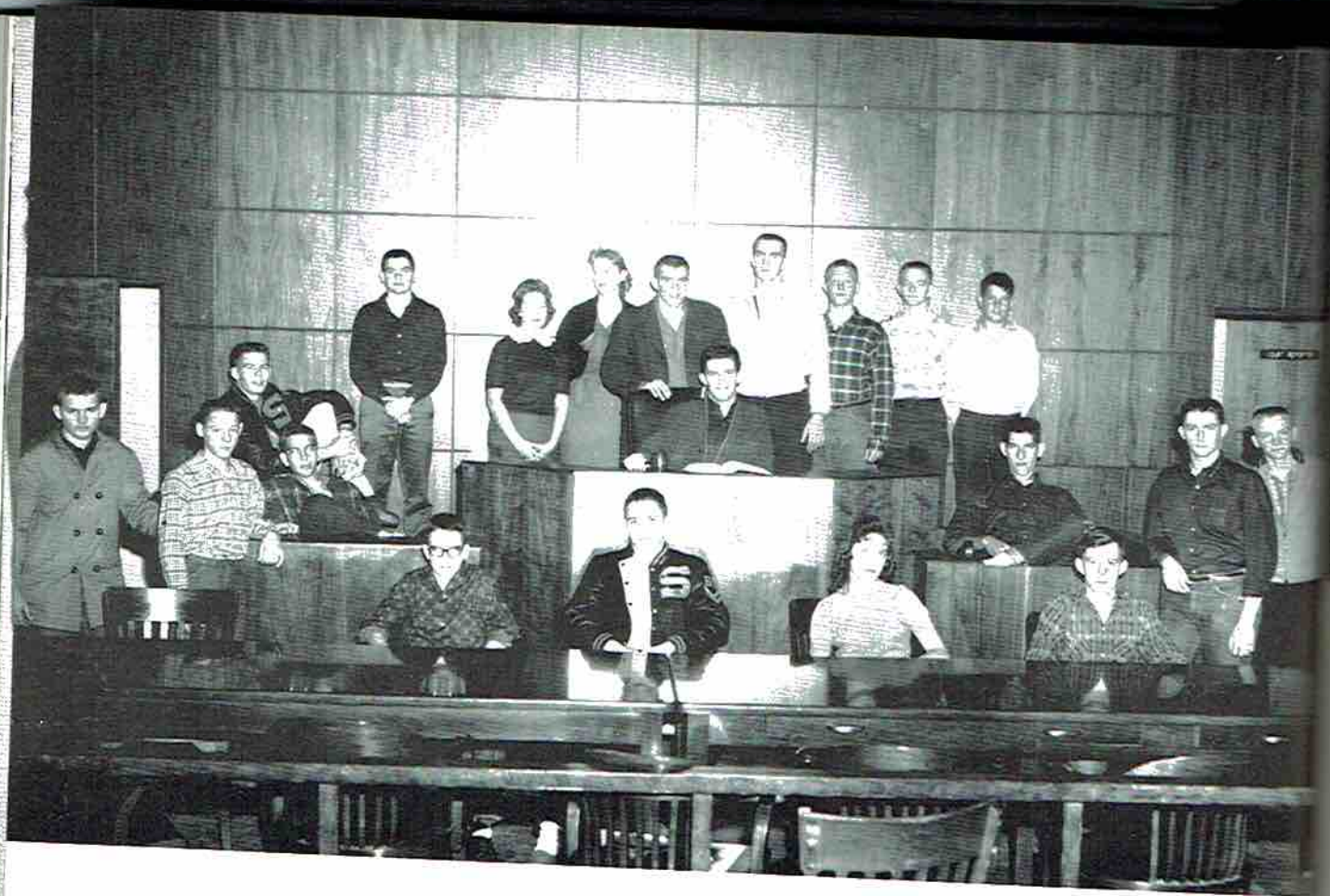
# Organizations



I in got up  
what's an excuse?



Jean



## Student Council

### OFFICERS

- President . . . . . John Blackwell  
 Vice-President . . . . . Charles Dawson  
 Secretary-Treasurer . . . . . Allen Lee  
 Sponsor . . . . . Mr. Collins



Sports  
 Worley  
 Rosalie  
 Stan.  
 Activities  
 Bell H  
 Patch,  
 Exchange



# The Wildcat Staff

Editor . . . . . Jackie Porch

Sponsor . . . . . Mrs. Kenneth Muse

Typists, Brenda Frazier, Tallulah Cunningham, Joan Selvage, Carolyn Travis, Lee Morris Harrington, Business Manager; Lynn Derrick, Photographer.



Sports Editors, Doug Hodges, Davis Worley, John Blackwell; News Editors, Rosalie Maples, Jo Pell Brandon, Carol Sloan, Vivienne Webb; Clubs and Activities Editors, Sandra Murrah, Jessie Dell Hicks; Feature Editors, Jill Porch, Martha Woodall, Charles Heath; Exchange Editor, Virginia Lackey.





1st Year

F  
H  
A



2nd and 3rd  
Year

OFFICERS

- President . . . . . Frances Daniels
- Vice-President . . . . . Linda Page
- Secretary . . . . . Billie Ann Sebring
- Treasurer . . . . . Donna Jo Holder
- Reporter . . . . . Sandra Murrah
- Parliamentarian . . . . . Linda Bryant
- Historian . . . . . Edith Webb





## Future Farmers of America



### OFFICERS

- Rayford Allen . . . . . President
- Holland Floyd . . . . . Vice-President
- Alvin Matthews . . . . . Secretary-Treasurer
- MacArthur Sanders . . . . . Reporter
- Bobby Arnold . . . . . Sergeant-at-Arms



F  
T  
A

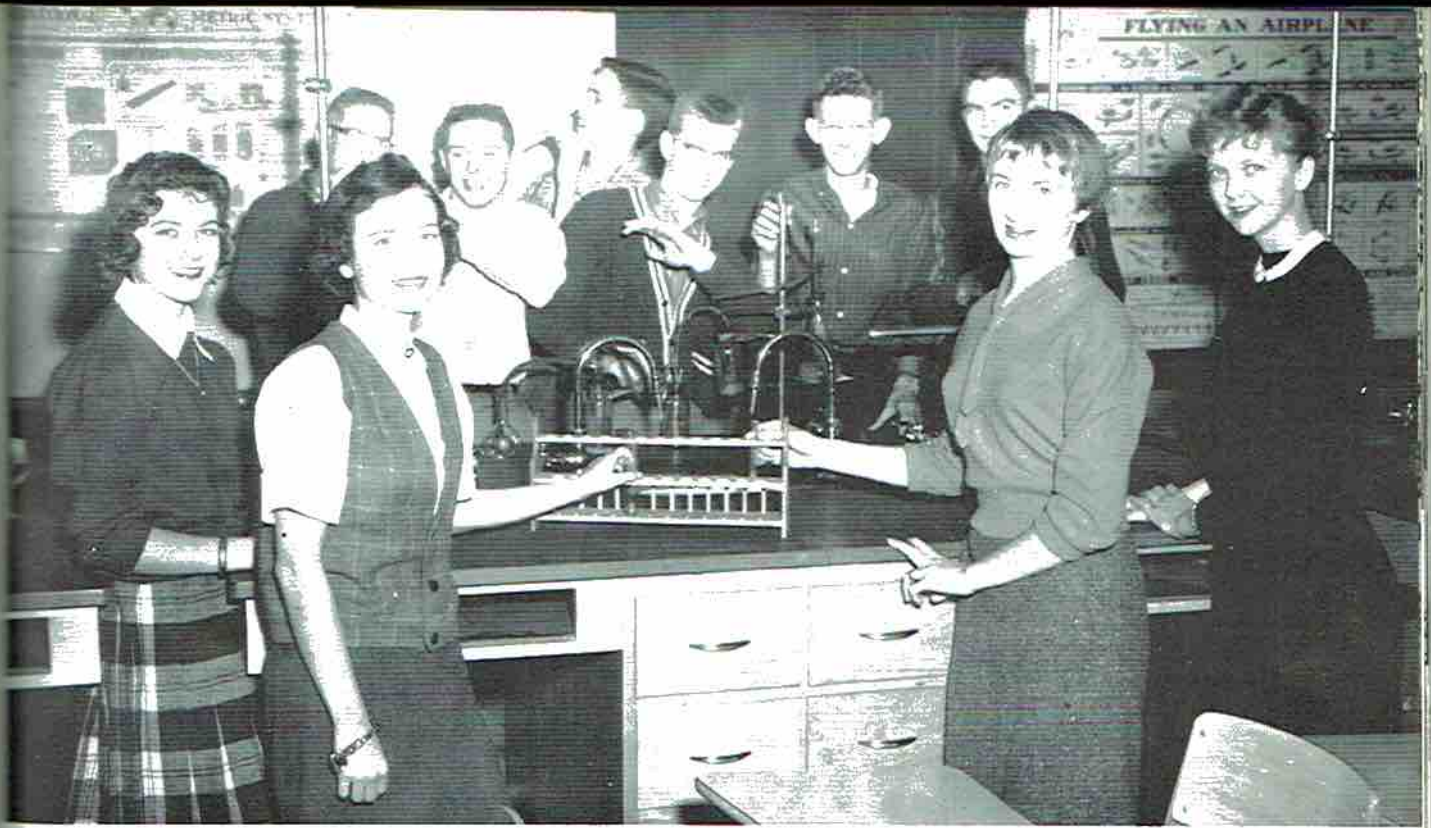


MEMBERS: Tommy Armstrong, John Blackwell, Glenda Bishop, Carolyn Travis, Lee Morris Harrington, Vera Carter, Brenda Frazier, Jackie Porch, Martha Lou Woodall, Elizabeth Judge, Kay Finney, Sandra Murrah, Nora Huntoon, Wanda Allen, Mary Neyman, Barbara Bankston, Frances Edge, Jo Pell Brandon, Elizabeth Shofner, Jackie Grider, Sue Bradford, Elizabeth Wilson, Sandra Rudder, Jill Porch, Carol Berry, Mary Ann Harris, Patsy Derrick, Rosalie Maples, Mary King, Donna Jo Holder, Judy Hubbard, Jessie Dell Hicks, Carol Sloan, Carol Roden, Linda Blackwell.

OFFICERS: John Blackwell, Parliamentarian; Tommy Armstrong, President; Jackie Porch; Mary Harris; Vera Carter; Frances Edge.

SPONSORS: Mrs. Armstrong and Mrs. Sanders.





Glenda Bishop, Mary Neyman, Lee Harrington, Davis Worley, Charles Heath, Ross Davis, Jimmy Gross, Tommy Lewis, Jackie Porch, Doyleene Hooper.

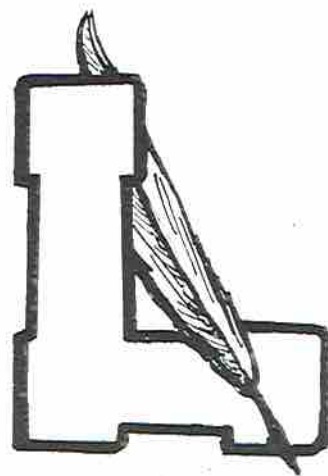
## Science Club

Martha Campbell, Shiles McCord, Sonny Hodges, Mike Goldston, Charles Dawson, Don Trammel, Tommy Brown, John Frank Armstrong, John Tally, Jimmy Beason, Kenneth Manning, Jill Porch.





**LIBRARY ASSISTANTS:** Sarah Roden, Frances Daniel, Jimmie Pritchett, Joan Selvage, Elaine Wilson, Mary King, Elizabeth Judge, Carolyn Roach, Jean Gullatt, Charlotte Rudden, Doyleene Hooper, Mary Neyman, Ruby Lee Proctor, Mrs. Heath, Sponsor. **NOT SHOWN:** Carolyn Lusk, Helen Keller.



**REPRESENTATIVES:** Bobbie Loyd, Charles Heath, Stanley Pickles, Charles Dawson, Addie Phillips, Celestine Metcalf, Martha Campbell, Gloria Barnett, Nora Huntoon, Ena Faye Martin, Judy Hubbard, Patsy Sherwood, Dora Cowart, Billy Earl Schultz. **NOT SHOWN:** Gerald Stone, Kelly Goodowens, Canna Mae Proctor, Samuel Tubbs, Nancy Clemens.



**OFFICERS:** Ruby Lee Proctor, Jean Gullatt, Charlotte Rudder, Frances Daniel, Carolyn Roach, Elaine Wilson.



## Sportsman's Club

MEMBERS: Ronald Rodgers, James Adams, Raymond Pendergrass, Jimmy Griggs, Bob Derrick, Lyles Haas, Donald Beddingfield, David Howell, Donald Hodges, Glynn Derrick, James Austin, Sells Arnold, Earl Reed, Homer Weeks, David Weeks, Paul Webb, Billy Farr, Mickey Bell, Vinson McClendon, Rayburn Selvage, Jimmy Harrington, Richard Howell, Tommy Ashmore, Jimmy Porter, John Darnell, Jerry Baker, Doyle Word, Howard Stuart, Bill Beard. SPONSORS: Mr. Pete Class and Mr. Richard Tyler.

# Pep Club

Lee Harrington . . . . . President

Glenda Bishop . . . . . Vice-President

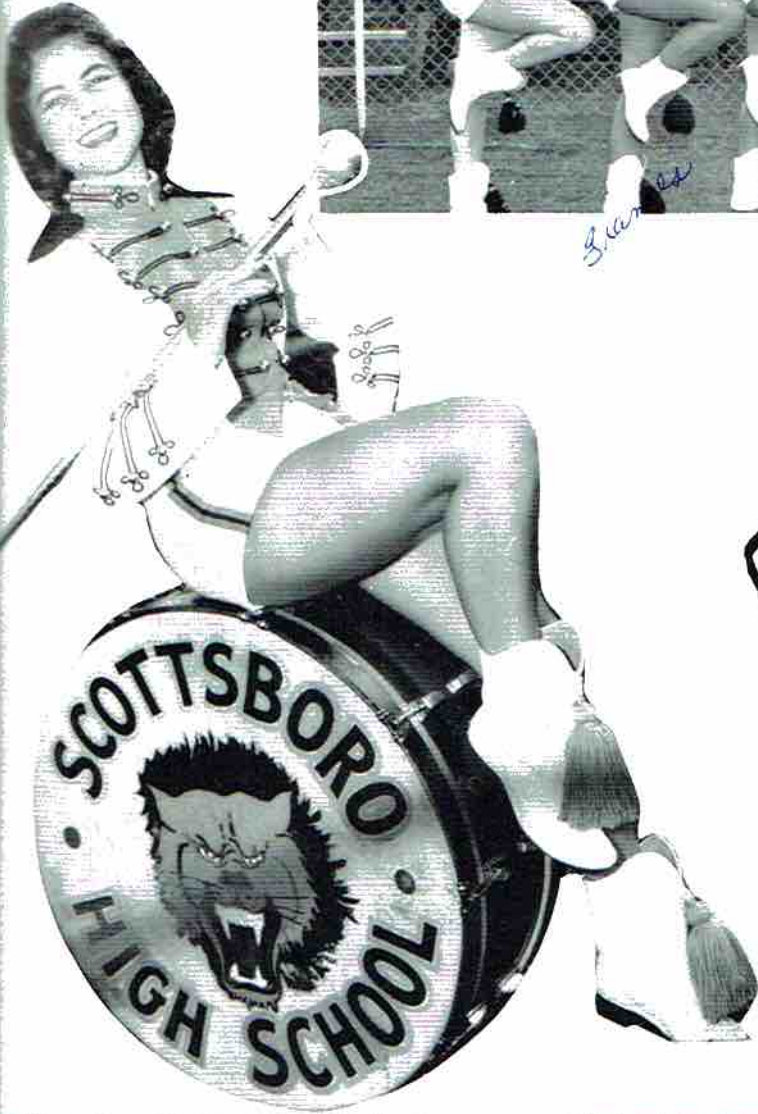
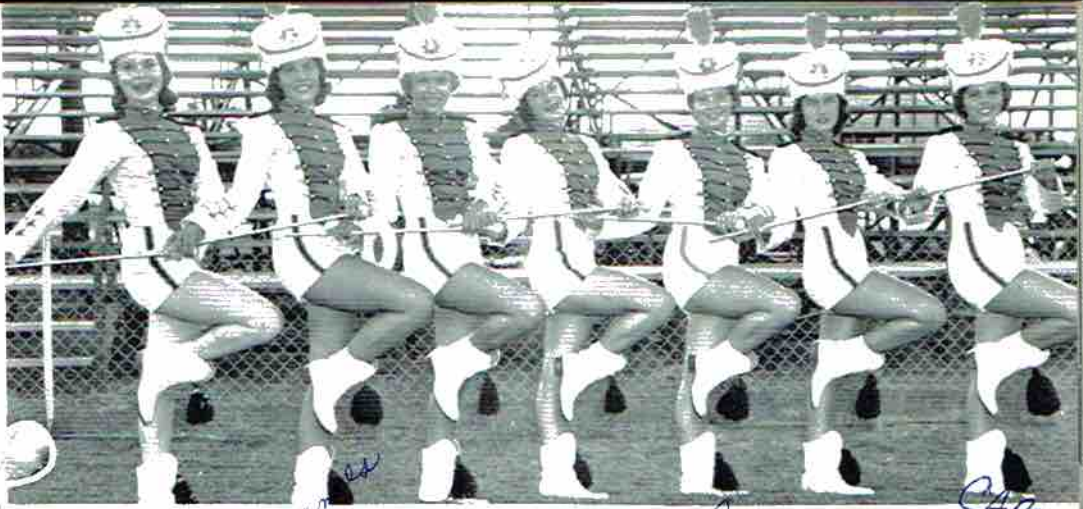
Vera Carter . . . . . Secretary

Sue Bradford . . . . . Treasurer



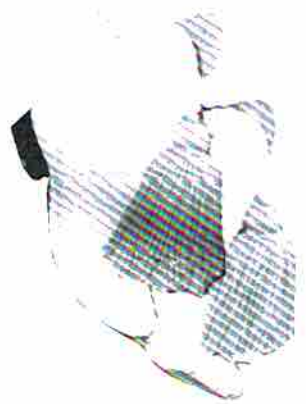
CHEERLEADERS--Porch, Hubbard Blackwell, Travis, Shelton, Porch--Pep Club--Rudder, Hess, Daniel Rodgers, Stuart, Kennemar, Brandon, Cordell, Goldston, Maples, Derrick, Campbell, Derrick, Derrick, Nash, Archer, Barnett, Derrick, Neyman, Adkins, Berry, Carter, Cunningham, Frazier, Bishop, Derrick, Woodall, Page, Vaught, Murrah, Wilkerson, Martin, King, Metcalf, Harrington, Gentle, Coplin, Wilson, Harris, Grider, Elliot, Bradford, Roden Webb, Dawson, Hicks, Proctor, Chambers, Edge, Bankston, Derrick, Grider, Frazier, Wilson, Shofnor, Hill, Atkins, Sloan, Mitchell, Davis, Bryant, Rodgers, Liles, Sharp, Blackwell, Cunningham, Lee, Worley, Chandler, Hancock, Phillips, Watson, Maples, Bryant, Latham, Hass, Beard, Grider, Yarbrough, Brewer, Hamlin, Precise, Floyd, Farr, Wilhelm, Wilson, Rudder, Treece, Hass, Crawford, Stuart, Thomas, Davis, Pickles, Elliot, Sebring, Adkins, Adams, McCord, Beard, Gist, Trammell, Hodges, Irving, Roberts, Cowart, Adams, Barnett, Bell, McCoy, Hodges, Stone.

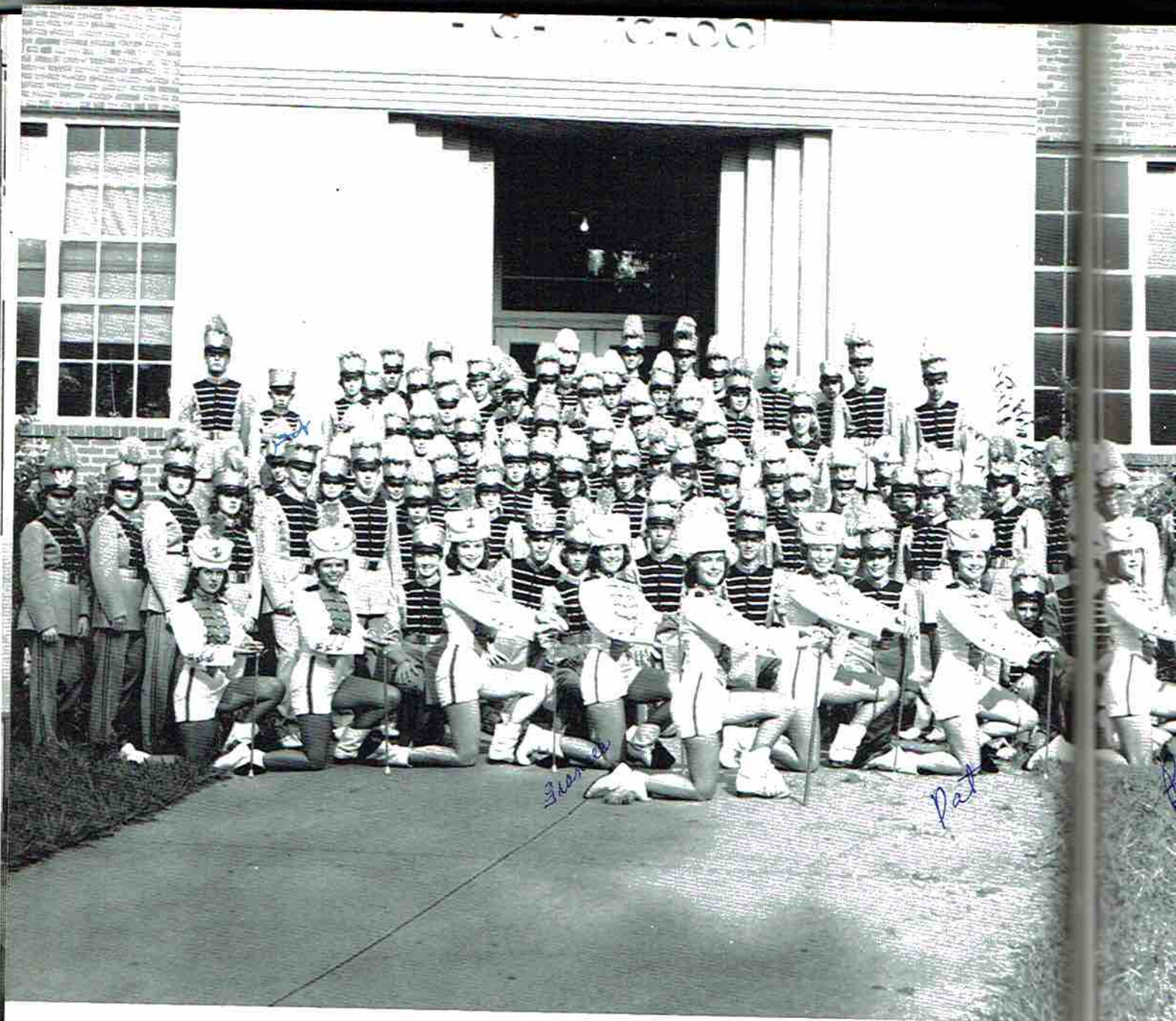
Glenda Bishop  
Head Majorette



## Majorettes

- Martha Campbell
- Frances Edge
- Carol Roden
- Barbara Bankston
- Patsy Derrick
- Carol Sloan
- Sandra Rudder

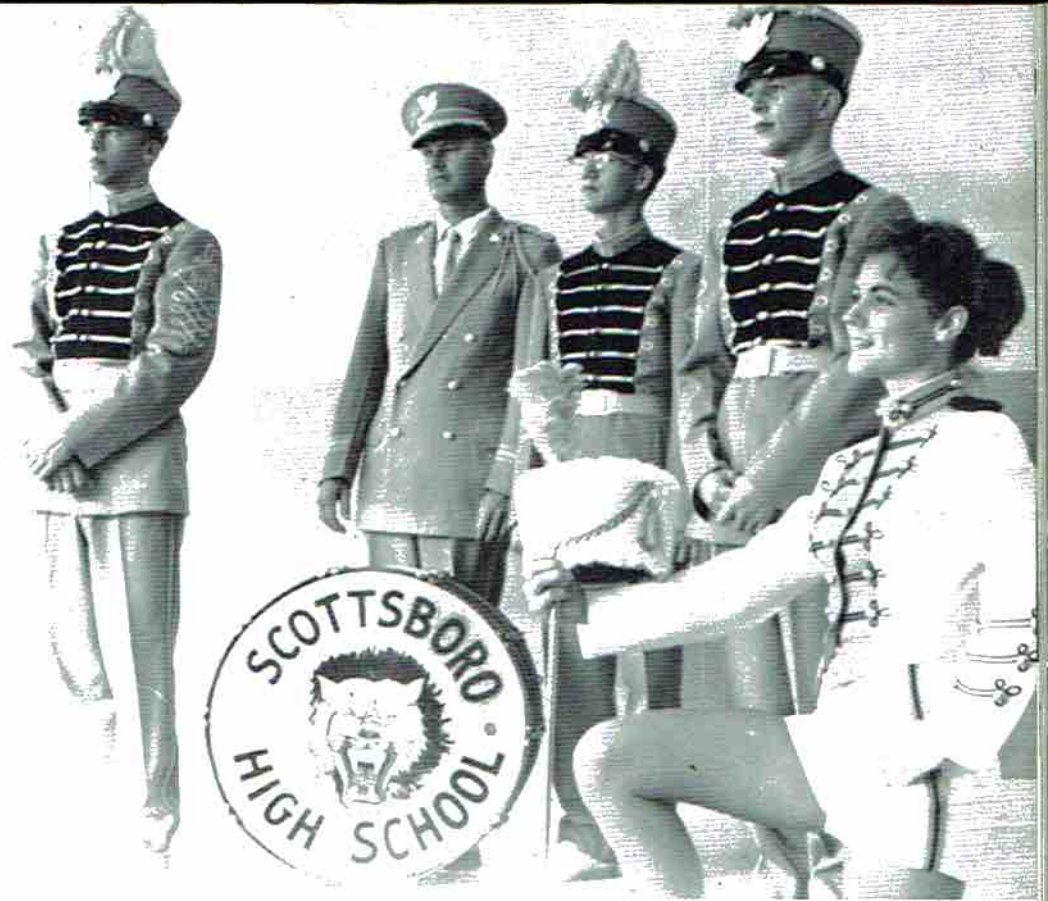




## Scottsboro High School Band

DIRECTOR: Mr. Orris Lee

MEMBERS: Patricia Adkins, Clay Alspaugh, Kaye Archer, John Fred Armstrong, John Frank Armstrong, Barbara Bankston, Elizabeth Barnes, Glenda Bishop, Bonnie Bradford, Martha Bramlett, Ronald Brandon, Jo Pell Brandon, John Brewer, Clyde Broadway, Tommy Brown, Randy Bryson, Sylvia Campbell, Lucy Campbell, Martha Campbell, Celeste Chambers, Glenda Chaney, Shirley Cook, Erma Lee Davis, Ross Davis, Nita Dawson, Susan Deerham, Carol Derrick, Barbara Derrick, Jerry Derrick, Patsy Derrick, Larry Derrick, Frances Edge, Patricia Elliot, Carolyn Elliot, Myron Gardner, Paulette Gentles, Johnny Green, Carolyn Hall, Val Hamlin, Carlene Hamlin, Mary Ann Harris, Charles Heath, Dorothy Heath, Jessie Dell Hicks, Carolyn Hodges, Sonny Hodges, Betty Irvine, Alva Dell Johnson, Danny Kennamer, Sandra Kennamer, Kenny Lewis, Tommy Lewis, Gloria Martin, Patsy McNeil, Mary Helen Mecklous, Celestine Metcalf, Jeanie Muse, Louretta Nash, Gaylia Nash, Thomas Nelson, Bonnie Nevils, Buddy Nichols, Patsy Nygard, Bill Parks, Joe Power, Lynn Price, Janice Proctor, Margaret Proctor, Carol Roden, Don Rodin, Janith Rogers, Ira Sue Rousseau, Sandra Rudder, Carol Sloan, Jo Ann Starnes, Sudie Stewart, Alice Faye Stewart, John Tally, George Walker, Vivienne Webb, Shirley Wilhelm, Judy Williamson, Lucy Wilson, Elizabeth Wilson, Bobby Nell Womack, Becky Wood, Davis Worley, Hilda Woosley.



OFFICERS; President, Ross Davis; Vice-President; John Frank Armstrong; Secretary-Treasurer, Davis Worley; Head Majorette, Glenda Bishop.







David  
"Cha" Cha



COACHES--Q.K. Carter, Sam Hambrick, John Meadows, Lawrence Robinson. MEMBERS--B. Arnold, Griggs, Rogers, K. Atkins, Byrd, Beddingfield, Schultz, Webb, Machen, Hammonds, Ashmore, Crawford, Campbell, Derrick, Blackwell, Johnson, Foster, King, Nevels, Newell, D. Howell, J. Atkins, S. Arnold, Womack, Brandon, Dawson, Precise, Bolton, R. Hodges, Armstrong, Evans, Cotton, R. Howell, Baggett, Gist, Darnell, Beard, McCord, Woods, Treece, Trammell, Floyd, Bell. CHEERLEADERS--Jackie Porch, Carolyn Travis, Linda Nell Shelton, Jill Porch, Judy Hubbard, Linda Blackwell.



Mrs. Muse, Jill Porch, Roger Carter.



Mrs. Broome, Aubrey Machen, Vera Carter, Billy Ray Davis.

## Office Assistants

Skippy Cunningham, Brenda Frazier, Bobby Baggett.



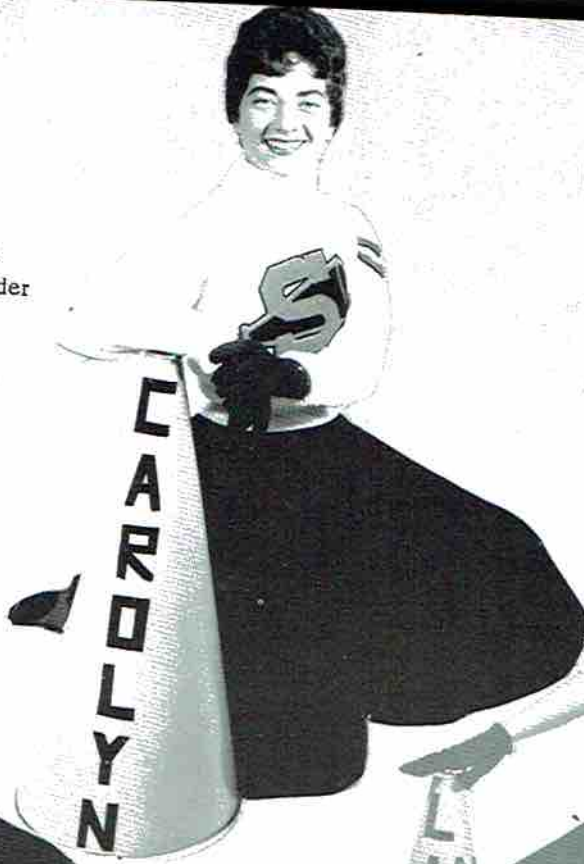
Davis Worley, Martha Lou Woodall, R. C. King.



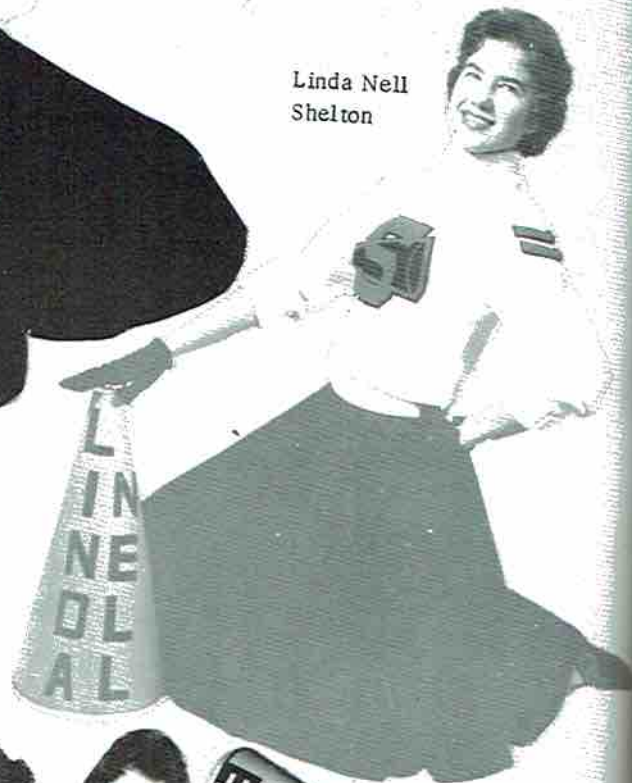
# Scottsboro

Carolyn Travis  
Head Cheerleader

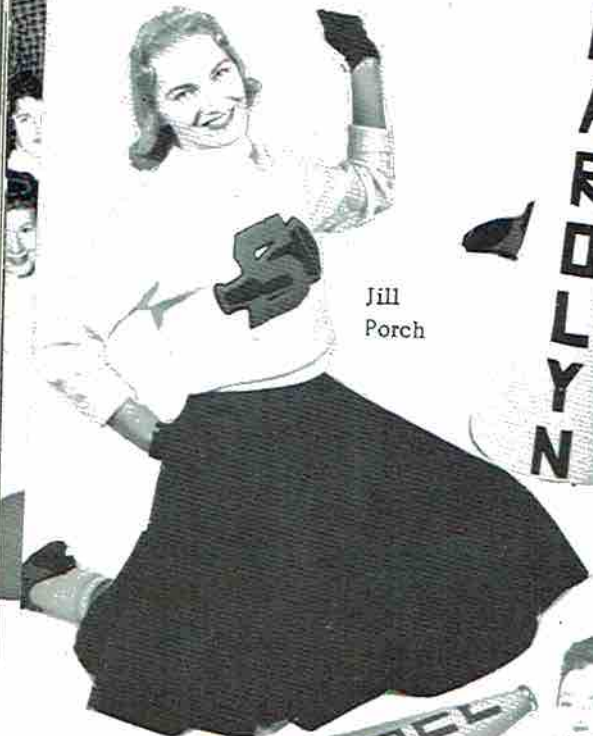
# Cheerleaders



Linda Nell  
Shelton

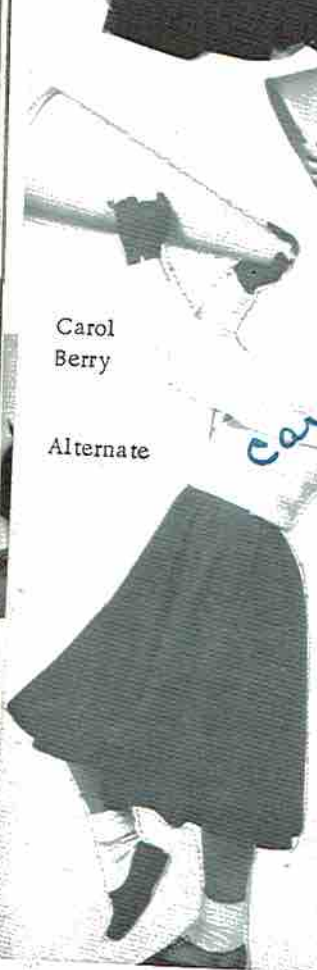


Jill  
Porch



Carol  
Berry

Alternate



Judy Hubbard



Linda Blackwell



Jackie Porch





Doug Green, President; Carol Smith, Secretary; Margaret James, Wilborn Warren, Terrel Clemons, Vice-President; Marvin Wright, J. R. Porch, Coordinator; Zack Gross, Tom George, Reporter; Freddie Sherell, Glenn Holt, Ruby Edwards, Kathleen Holt, Treasurer.

## Diversified Occupations

Larry Wallingsford, Dennis Hendrix, Billy Dearman, Linda Vaught, Ronald Hammon, Lawrence Berry, Jerry Rodgers, Paula Chambers, Stanley Manning, Sammy Arnold, Kenneth James, Patsy Poland, Homer Ake, Wendell Dudley.





# National Honor Society



## SENIORS

Horace Thomas Armstrong, Glenda Faye Bishop, John Glasgow Blackwell, Vera Elizabeth Carter, Tallulah Mae Cunningham, Billy Gene Farr, Kathryn Finney, Lee Morris Harrington, Charles Maples Heath, Nora Maude Huntoon, Thomas Earl Lewis, Sandra Ann Murrah, Jimmie Jacqueline Porch, Montye Carolyn Travis, Shelby Davis Worley.

## JUNIORS

John Frank Armstrong, Barbara Bankston, Albert Neal Bolding, Martha Elizabeth Campbell, Charles Cook Dawson, Robert Glenn Derrick, Frances Aurora Edge, Kelly Goodowens, Donna Jo Holder, Mary Ann Harris, R. Charles King, Rosalie Maples, Mickie Nejill Porch, William Earl Schultz, Elizabeth Shofner, Linda Nell Shelton.

## SOPHOMORES

Douglas McArthur Bryant, Jerome Val Hamlin, Jessie Dell Hicks, Allen Lee, Glenda Robert, Carol Sloan, Vivienne Webb.

## OFFICERS

President, John Blackwell; Vice-President, R. C. King; Secretary, Jackie Porch; Treasurer, Linda Nell Shelton.

Don't hold your  
breath on me

H e l p - - -  
( G u l p )

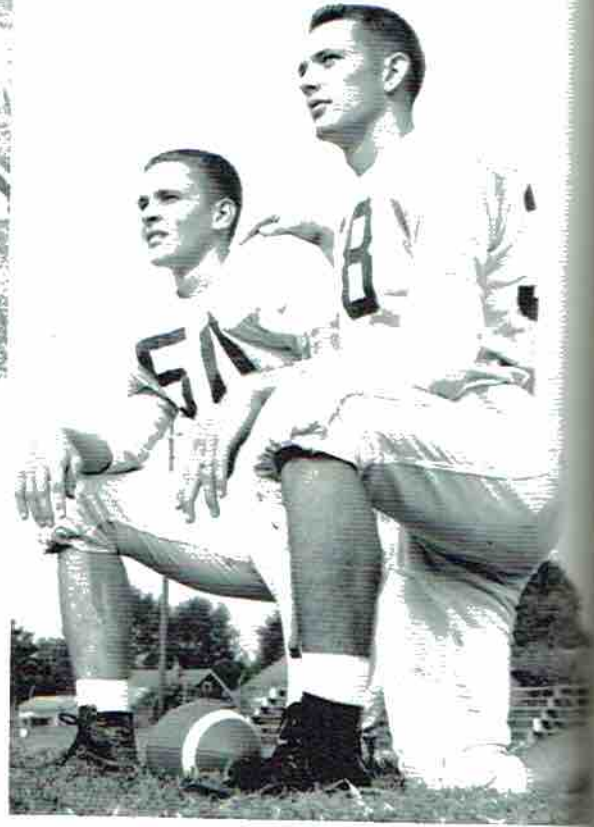
Heh! Heh! My name's not Mabel. Gr...



# Football



COACHES--Meadows, Robinson, Hambrick, Carter



CAPTAINS--Bill Wood, Mickey Bell



BOB

CH



MICKEY BELL  
Halfback



BILL WOOD  
Tackle



BILLY BEARD  
Quarterback



BOBBY ARNOLD  
Center



PAUL WEBB  
Tackle



HAROLD NEWELL  
Guard



CHARLES DAWSON  
Quarterback



DONALD BEDDINGFIELD  
Fullback



LARRY NEVILS  
End





R. C. KING  
End



RONALD ROGERS  
End



JAMES GRIGG  
Halfback



BILL SCHULTZ  
Halfback



SHORTY MACHEN  
Fullback



DON TRAMMEL  
Tackle



JOHNNY DARNELL  
End



BOB DERRICK  
Guard



SAMMY ARNOLD  
Halfback



BOBBY BAGGETT  
Halfback



ROBERT BYRD  
Center



WAYNE WOMACK  
Guard



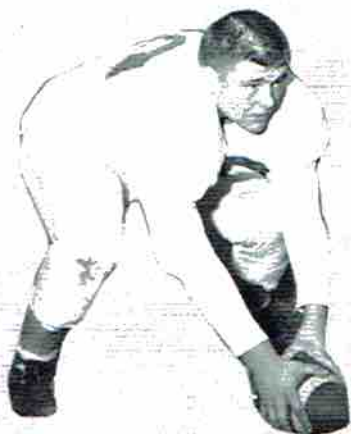
*Same*  
DAVID HOWELL  
End



BOBBY HAMMONDS  
End



WAYNE TREECE  
Halfback



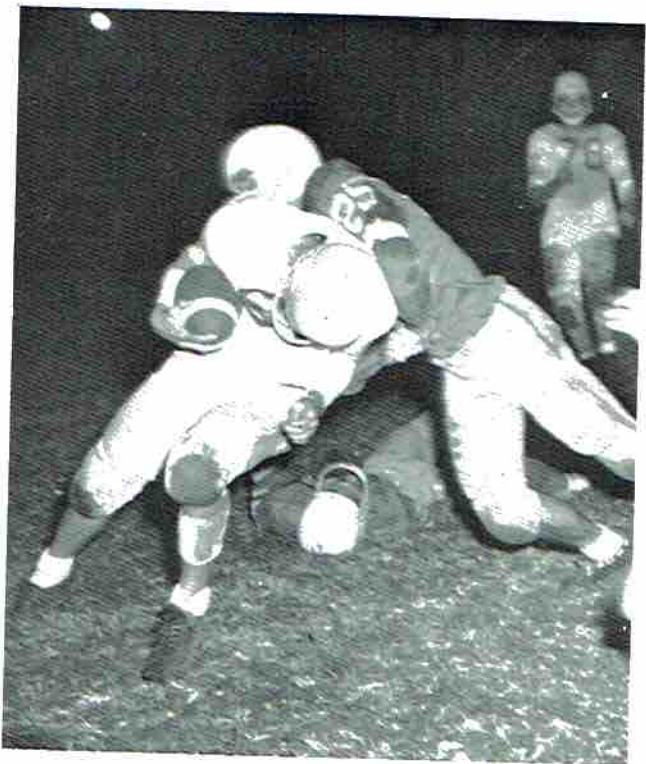
BUTCH FOSTER  
Center



JERRY ATKINS  
Guard



JOHNNY JOHNSON  
Tackle



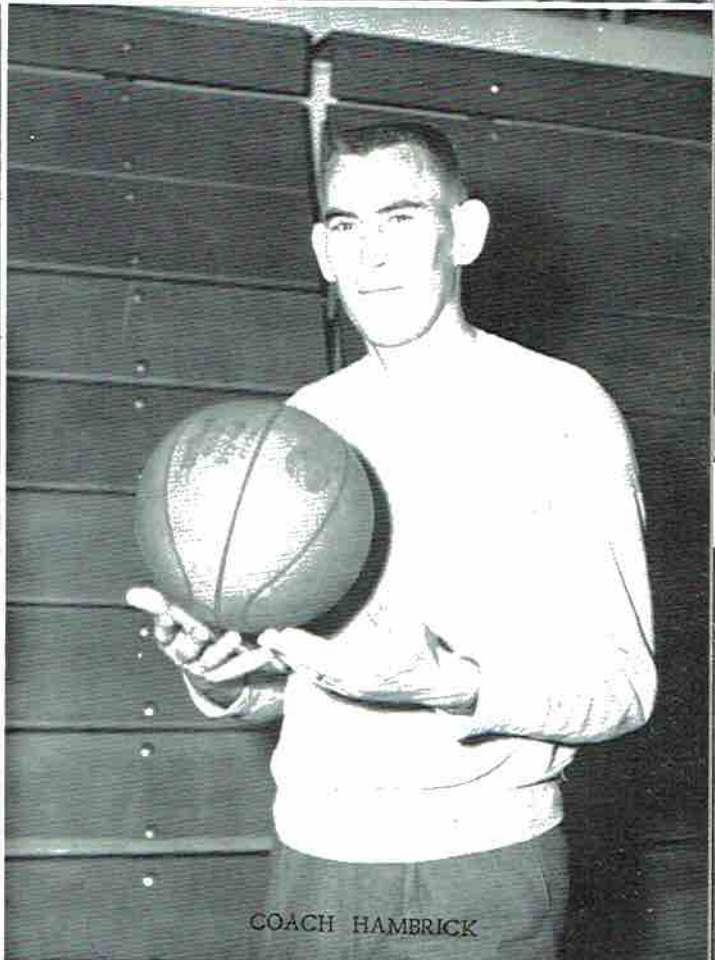
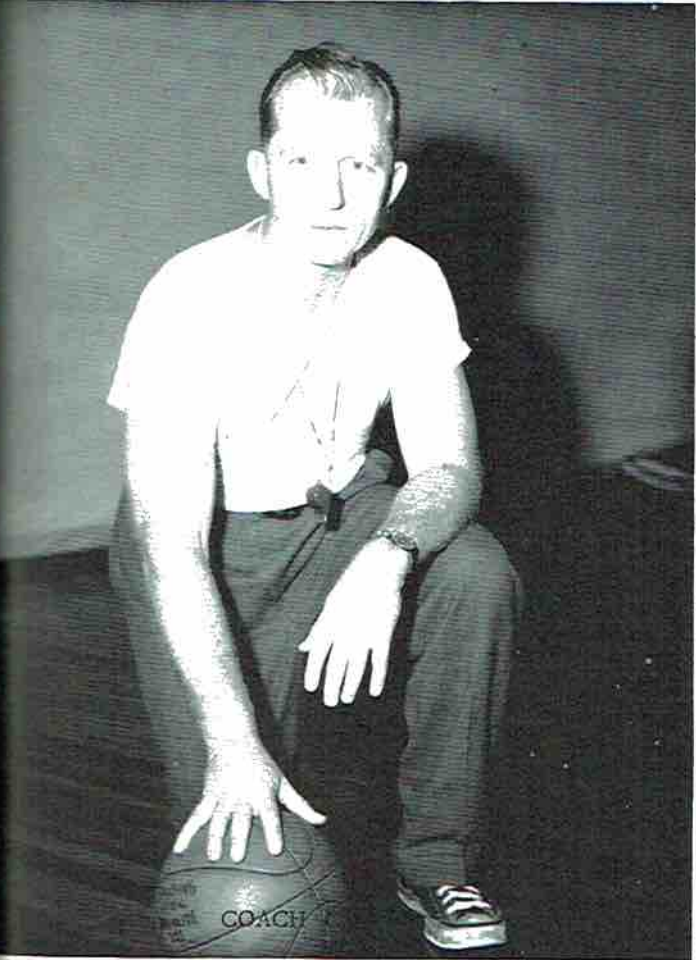
"Why don't we both go the same way."



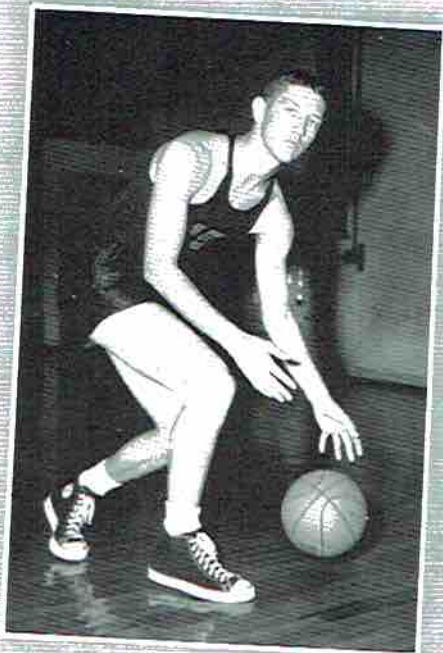
"Uh! I think we're being followed."



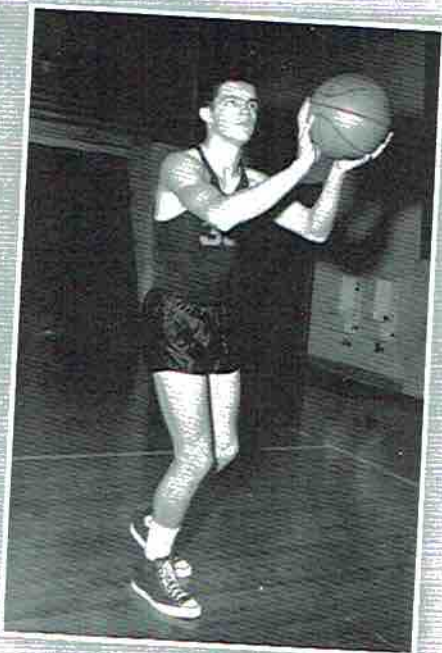
"Bell's in the clear."



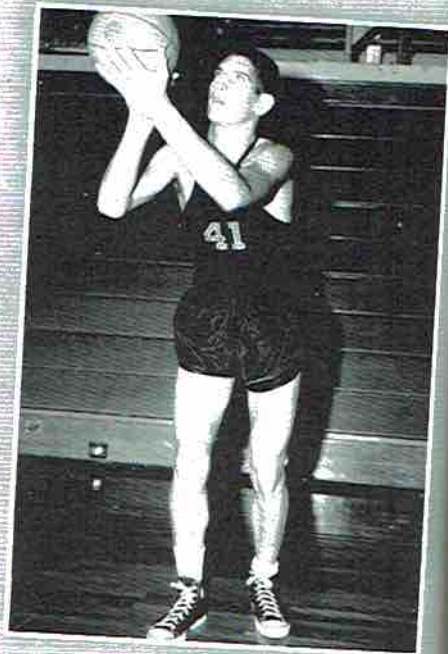
*L. W. King*  
*L. W. King*  
31 3



Bill Beard, Forward



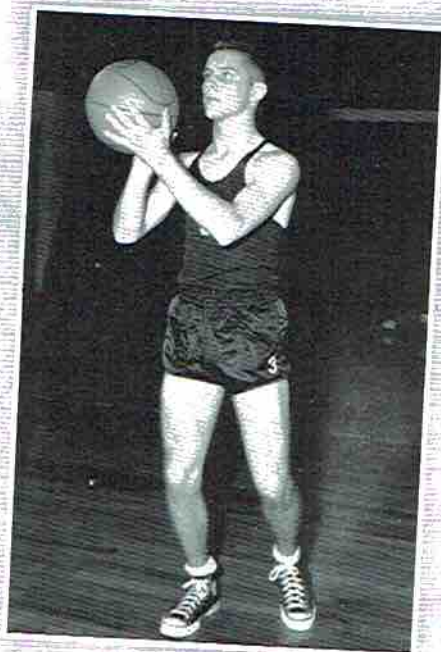
John Blackwell, Forward  
Captain



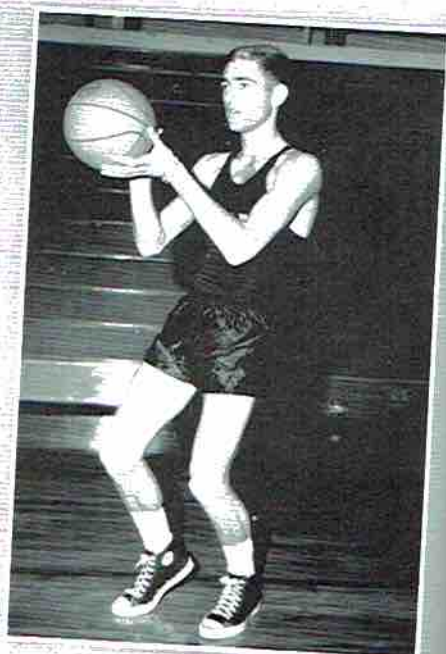
Holland Floyd, Center



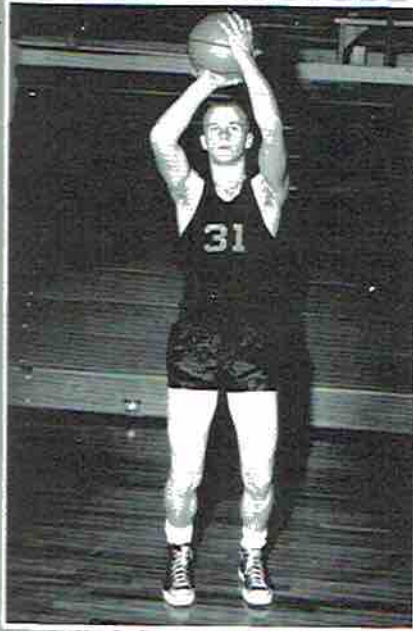
Leon Precise, Guard



Davis Worley, Guard

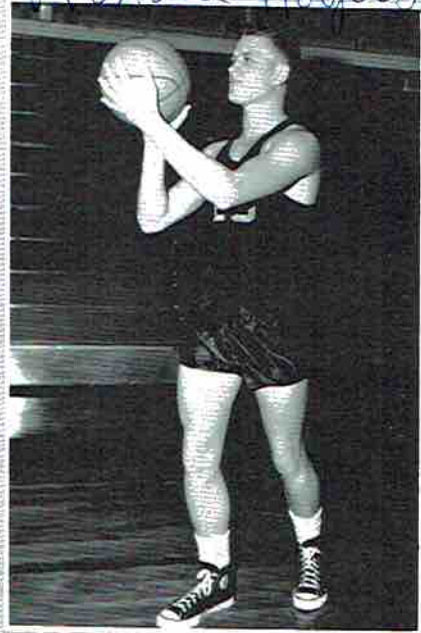


Jerry Gist, Center



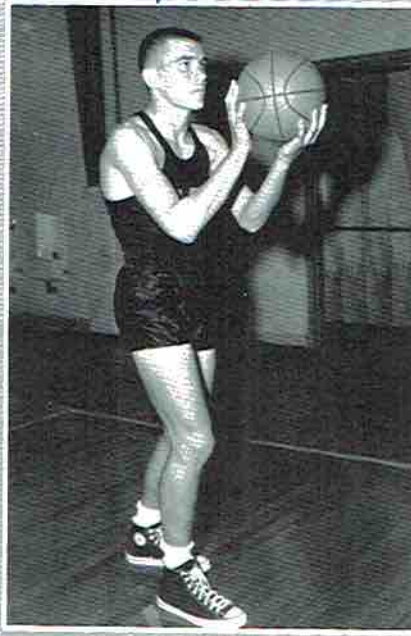
Larry Nevils, Guard

*Ronald Rogers*

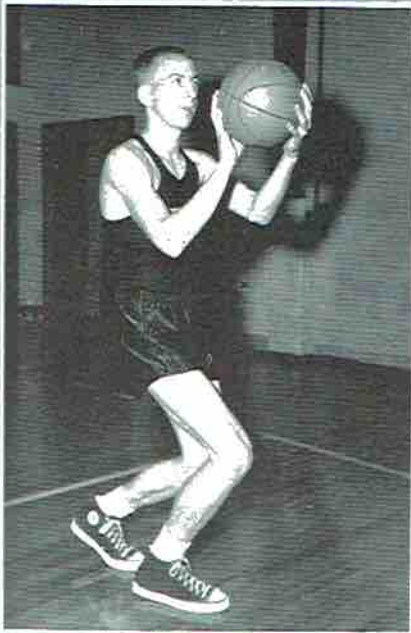


Ronald Rogers, Guard

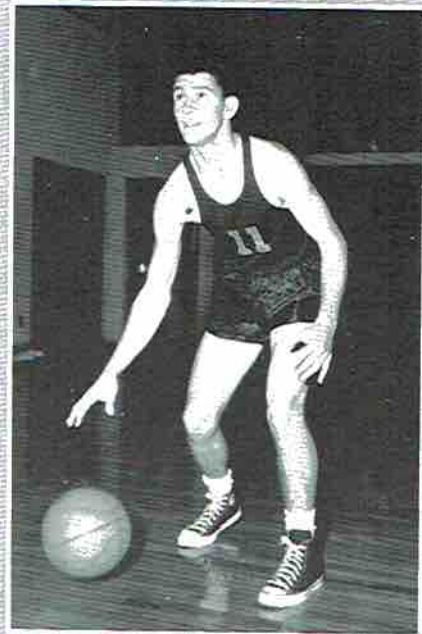
*R. C. King*



R. C. King, Forward

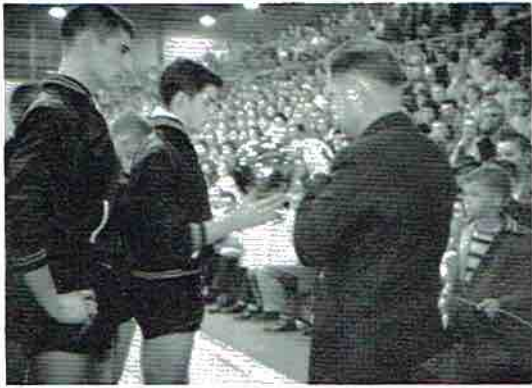


Stanley Manning, Forward



Billy Schultz, Guard

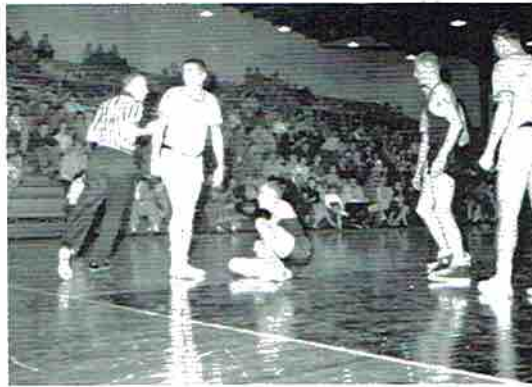
# Basketball Snaps



"Ah, Fine Gold!"



"Come on, boys! Shoot that ball."



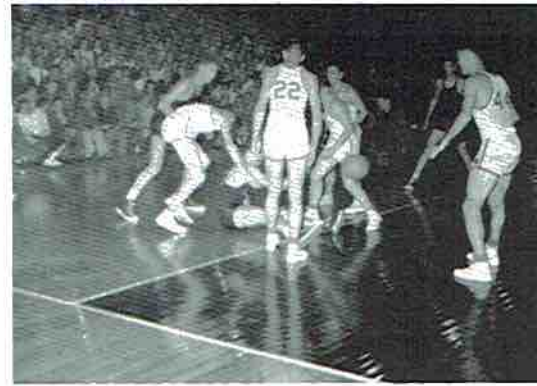
"Who! Me???"



"Somebody come and help me!"



"Where did the ball go?"



"Here, let me help you."



"Playmates"



"I told you to move."

# Girl's Physical Education

INSTRUCTOR, Mrs. Virginia Sloan



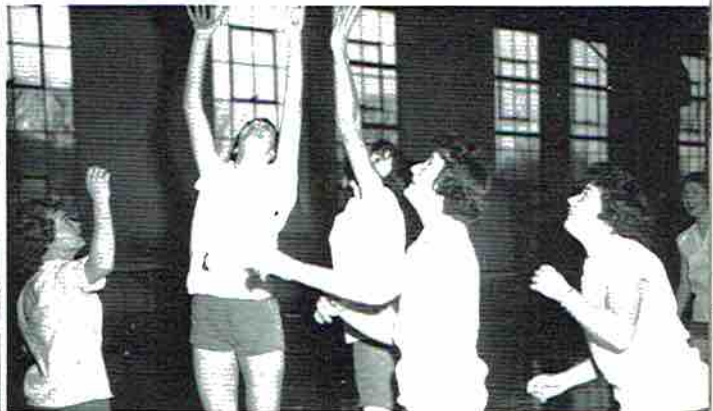
"What would happen if Margaret fell?"



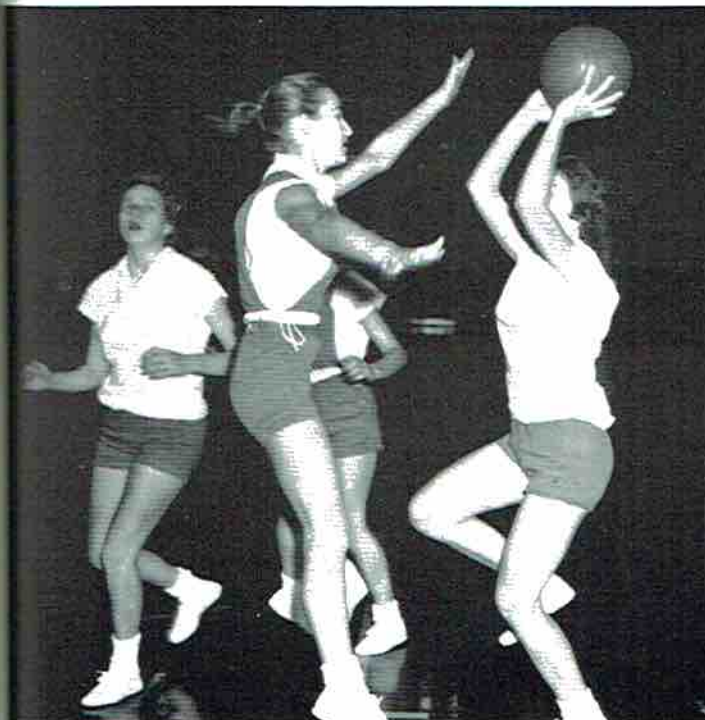
"Mrs. Sloan's surrounded"



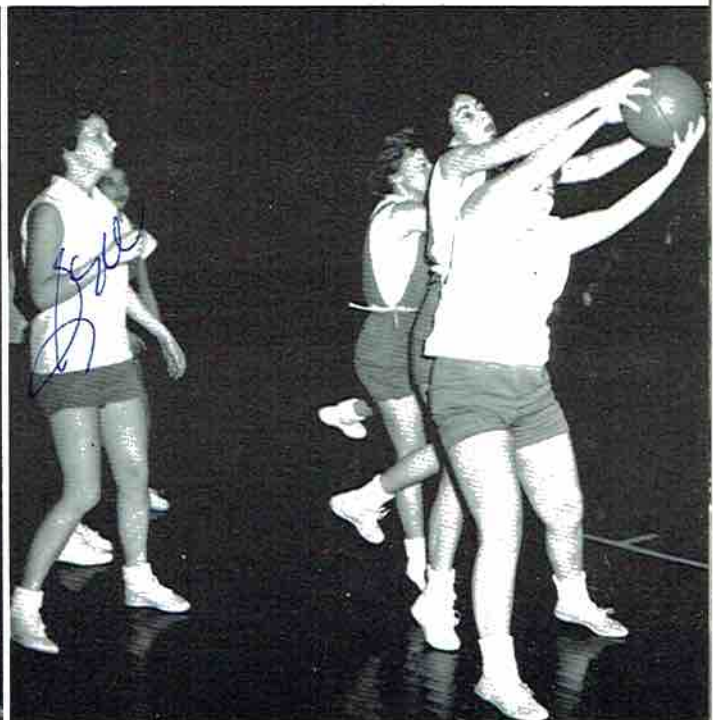
One! Two! Three! Legs up!



Holland Floyd's got competition!



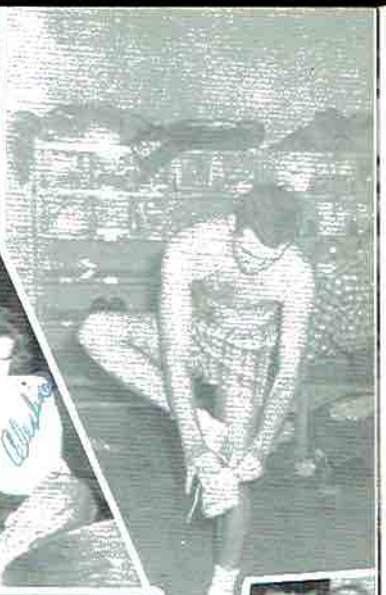
"Your mouth open won't help much, Ann!"

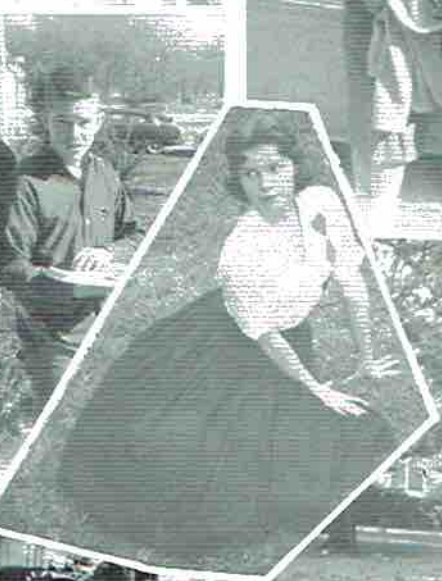


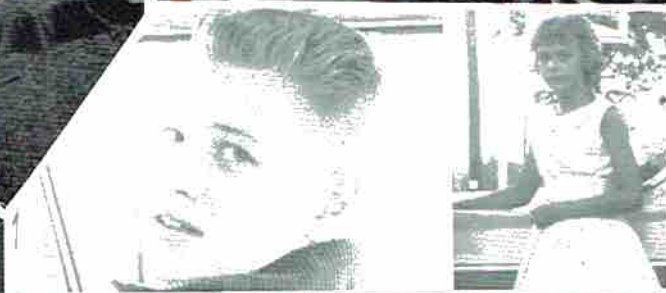
"Watch it, Martha Lou, you'll bite your tongue!"

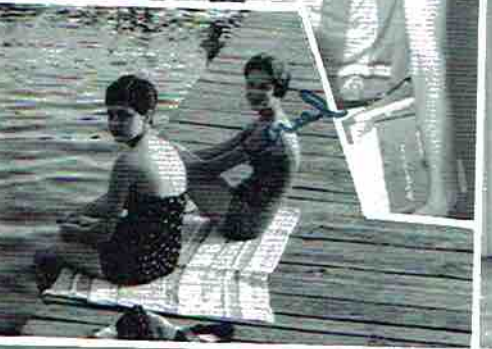
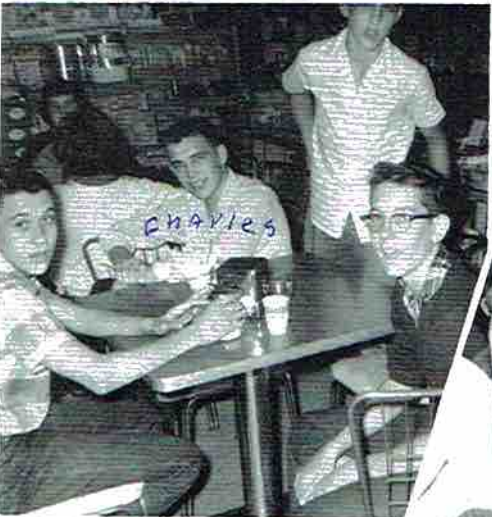






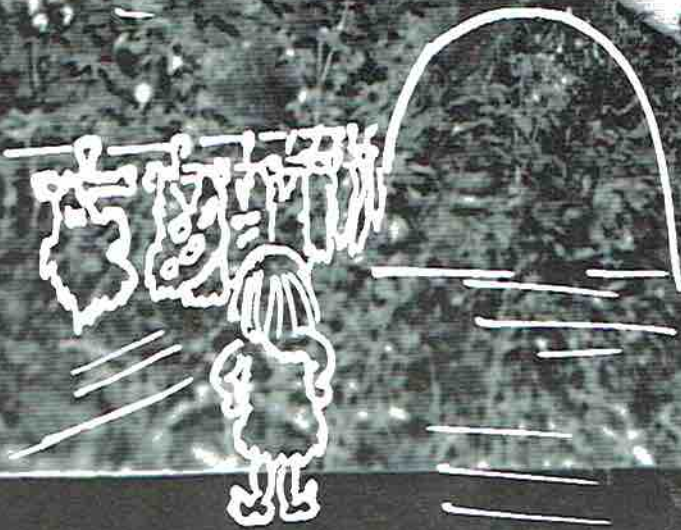








Oh Dear!  
I haven't a  
thing to wear.



Advertisements

Guidepost to Opportunity...



For young people seeking careers with challenge, the textile industry--one of the nation's most important industries -- offers excellent opportunities.

Let the world-famed Burlington "triangle of quality" be your guidepost to the future.

Young men and women of imagination, initiative and ability will find rewarding careers in textiles, and with Burlington, world's leading textile organization.

## SCOTTSBORO HOSIERY CO.

a unit of

Burlington INDUSTRIES, INC. 

### JULIAN HAMBRICK'S GIFT SHOP

A Complete Selection  
of Fine Gifts

115 Market Phone 357

Scottsboro, Alabama

### ROGER'S DRIVE-IN

Located on Highway 72

We specialize in Bar-B-Q

Scottsboro

Alabama

Compliments of

A. J. LINDSAY WHOLESALE

Fruits and Vegetables

Phone 74

Fort Payne

Alabama

Compliments of

HUBBLE BAKERY SERVICE

"Everything in the Bakery Line"

Taft Colquitt Distributors

Guntersville, Alabama

Phone 2-JU-3091

C O M P L I M E N T S  
O F

# CAMPBELL BROTHERS

TRUCKING COMPANY

Phone HE 7-2917

Fackler

Alabama

## Q.W. WOODS

Furniture and Appliances

"Where Prices are Born-Not  
Raised"

Phone 716-M

Scottsboro

Alabama

## DIXIE SAVINGS MARKET

Groceries - Western Meats

Garden Fresh Vegetables

401 Ft. Payne Highway  
Scottsboro Alabama  
Phone 488

Compliments  
of

THOMAS  
APOTHECARY

William T. Thomas, R. Ph.  
Prescriptionist

Phone 115  
Scottsboro Alabama





# SCOTTSBORO WHOLESALE COMPANY

Scottsboro, Alabama

Phone 133

SUE MAE'S HAT SHOP

For Women Who Know and Care

Hats and Accessories

Scottsboro, Alabama

Compliments

of

M. F. GARDNER

Distributor Gulf Oil Products

Scottsboro, Alabama

Compliments

of

BENHAM

UNDERWEAR

MILL

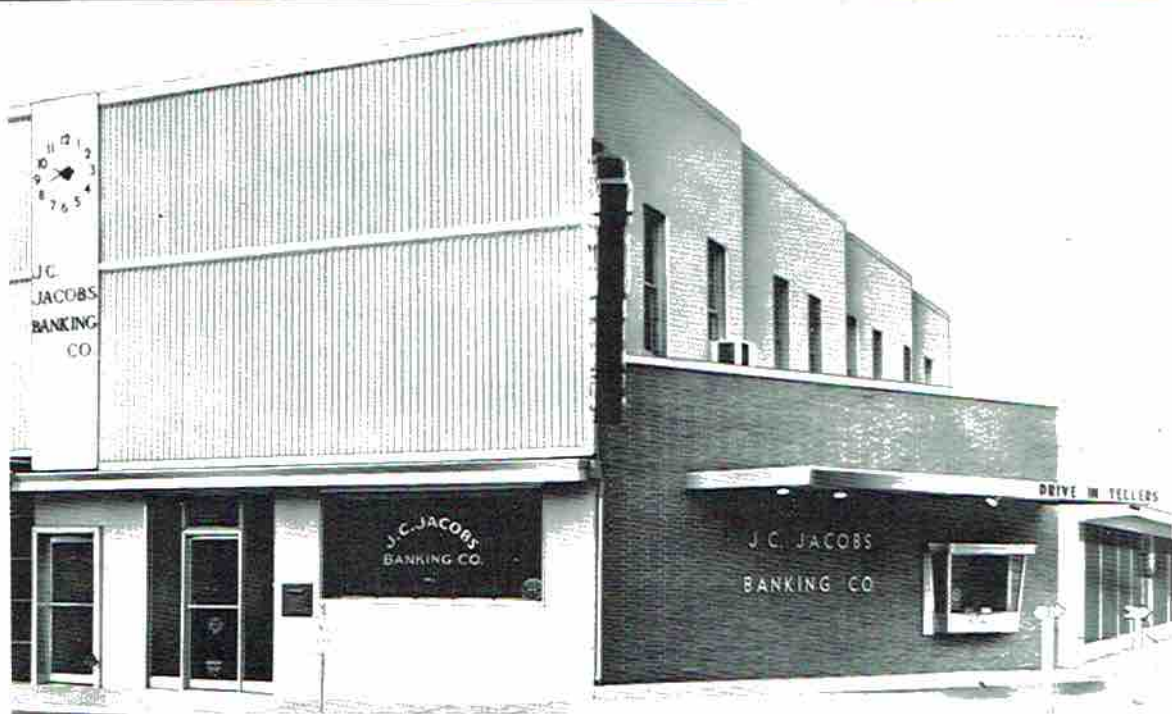
COMER BRIDGE BOAT DOCKS

Fishing Supplies

Boats and Swimming

Phone 802-R

D. G. Threadgill



# J. C. JACOBS BANKING CO.

Scottsboro's Only Drive-In Bank

## WORD THEATRES

Your Air Conditioned

RITZ

TAWASENTHA AND RAINSVILLE

DRIVE-IN THEATRES

Scottsboro

Alabama

Compliments of

## GIST STUDIO

Portraits, Weddings,  
Frames, Kodak Finishing

Scottsboro

Alabama

Phone 659 L

# WORD MOTOR COMPANY INC.

Chevrolet and Oldsmobile

Sales and Service

Scottsboro, Alabama



IT COSTS LESS AT—  
*Sterchi's*  
THE SOUTH'S LARGEST HOME FURNISHERS

Scottsboro

Alabama

THE MILL ENDS STORE

Your All-In-One Sewing  
Supply Center

Scottsboro

Alabama



THE PRINTING MART

Scottsboro, Alabama



W. R. O. S.

Scottsboro's "BEST"  
Radio Station

Scottsboro

Alabama

Compliments of

SCOTTSBORO

MANUFACTURING

CORPORATION

Scottsboro

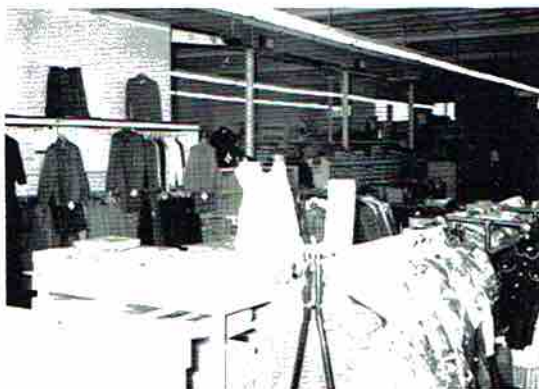
Alabama

Compliments of

FIVE POINTS MOTEL

Mr. & Mrs. J. B. Presley

Owners - Operators



ADAM'S  
STORE

Alabama

Scottsboro

Alabama



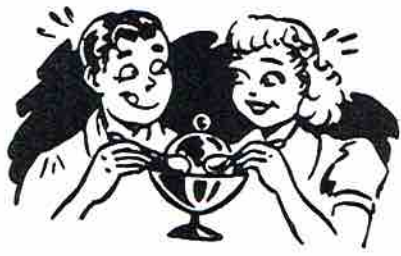
Compliments of

W. H.  
PAYNE

Drug Company  
Scottsboro, Alabama

Brooks Woodall  
Herbert Glass

Alabama



Compliments of

# REID'S SUNDRIES

Scottsboro

Alabama



# ADAM'S STORE

Scottsboro

Alabama



# HAMMER'S

Scottsboro

Alabama



Compliments of

# W. H.

# PAYNE

Drug Company  
Scottsboro, Alabama

Brooks Woodall

GRADE  
A  
MILK

Compliments  
of

# HAPPY VALLEY FARMS

Scottsboro, Alabama



Compliments of

VARIETY  
BAKE  
SHOPPE



Scottsboro

Alabama

WALE'S  
JEWELRY

"Gifts That Last"

Phone  
Scottsboro

204  
Alabama

STONE'S DEPARTMENT  
STORE

City Club-Velvet Step  
&

Weather Bird Shoes and  
First Quality Materials.

Phone 362  
Scottsboro Alabama

Compliments  
of

L. D. COBB GROCERY

Scottsboro

Alabama

# PATRICK LUMBER COMPANY

"Everything to Build Anything"

Dependable Quality

Since 1926

Scottsboro, Alabama

Phone 222



**One Board or a Trainload**

PARK'S



NOTE: "A GOOD  
PLACE  
TO  
TRADE"

Compliments  
of

WORD

# LUMBER

COMPANY

Scottsboro, Alabama

# STATE NATIONAL BANK

"One of Many Good Banks Serving North Alabama"

Scottsboro

Alabama

MARY'S BEAUTY SHOPPE  
102 West Willow Street  
COUNTRY BARBER SHOP  
108 West Willow Street

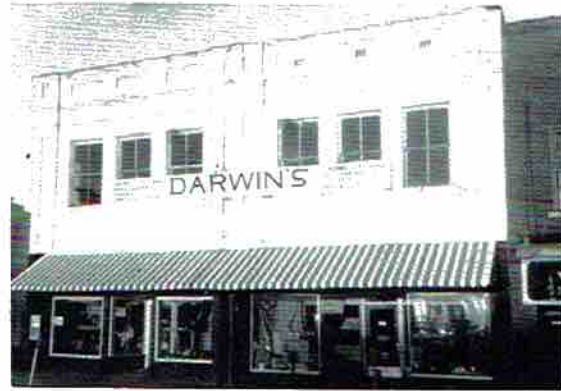
Congratulations Seniors

BUTLER AND KENNAMER  
WHOLESALE

Scottsboro

Alabama

Compliments of  
HEMBREE INSURANCE AGENCY



Congratulations Seniors

SWAIM RESTAURANT

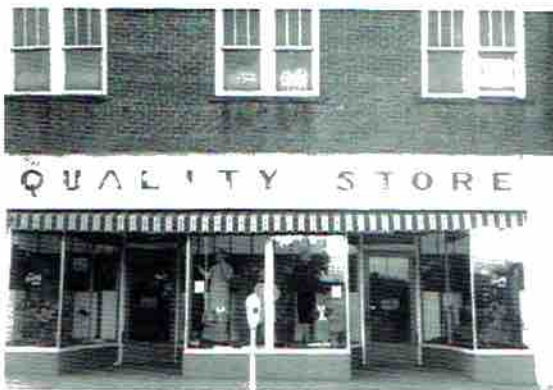
Mose Swaim, Owner

Scottsboro Alabama

DARWIN'S

"Popular Priced Merchandise"

Scottsboro Alabama  
Phone 667



THE RATLIFF  
QUALITY STORE

Scottsboro Alabama

Phone 179

Compliments  
of

ROUGH AND TUMBLE  
FURNITURE COMPANY

Scottsboro Alabama

Congratulations Seniors

RED

HOT

STORE

Scottsboro Alabama





SHOOK'S

Laundry and Cleaners  
Pick Up and Delivery Service

Phone 88

Scottsboro

Alabama

Trade At

MANNING'S

Phone 476-L

Home Owned and Home Operated

Scottsboro

Alabama

## McCAMY

### DRUGS

Gene McCamy, R. Ph.  
and

John Wilkerson

Mrs. High Stewart  
Donald "Duck" Hodges

Shirley Smart  
Elizabeth Ann Dolberry

Scottsboro, Alabama

Compliments

of

ELMORE

Scottsboro

Alabama

Congratulations  
to  
Seniors

JONES  
DRY GOODS

Scottsboro

Alabama

GIST JEWELRY

Watches, Diamonds, Jewelry

"Fine Gifts From Gist"

Scottsboro

Alabama

Congratulations  
to  
Seniors

IONE'S  
Fashions for Ladies

Scottsboro

Alabama



Congratulations Seniors

WOODALLS

Scottsboro

Alabama

WORD FURNITURE COMPANY  
"Home of Good Furniture"

Scottsboro

Alabama

Compliments  
of

WOOD'S SUPER MARKET

Staple, Fancy Groceries  
And Fresh Meats

Scottsboro

Alabama



Compliments  
of

LADIES' & CHILDREN'S  
SHOPPE

Scottsboro

Alabama

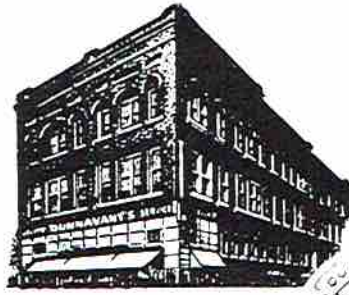


Compliments  
of

BOYD - MERIDETH  
MOTOR COMPANY

Scottsboro

Alabama



*Dunnivant's*



Compliments

of

THE PEGGY SHOPPE

Scottsboro

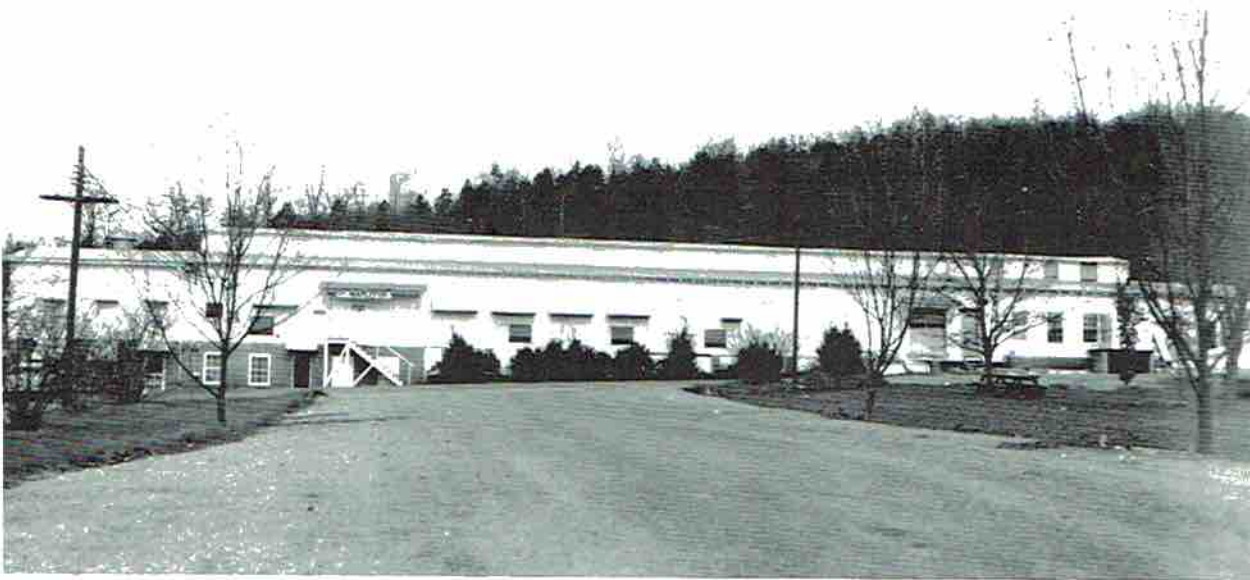
Alabama

WILSON'S  
STORE  
AND ROLLING STORE

"Jackson County's Finest  
Country Store"

Fackler

Alabama



Compliments

of

MAPLES COMPANY

Compliments of  
PROCTOR SUPER MARKET

CHILDRESS IMPLEMENT &  
SUPPLY CO.

Wholesale Distributors of  
Hardware and Implements  
Tractor and Tractor Implements  
General Electric Appliances  
Phone 303  
Scottsboro Alabama

Compliments of  
E. G. Fitzgerald, Gene Fitzgerald,  
and Jim L. Johnson

**L. G. BALFOUR  
COMPANY**

P.O. Box 1072

Birmingham, Alabama

Compliments of  
JACKSON COUNTY SENTINEL  
Est. 1929  
The Progressive Age  
Est. 1889

Job Printing    Office Supplies

HODGES  
DRUG STORE

"As Near as Your Telephone"  
Scottsboro Alabama  
R. L. Hodges  
Charles Hodges

**THE FIRST NATIONAL BANK**

"Your Friendly Bank in Scottsboro"

Free Customer Parking

Scottsboro

Alabama

