



1984

THE EAGLE

Presenting . . .

the

1964

EAGLE . . .

Pisgah High School

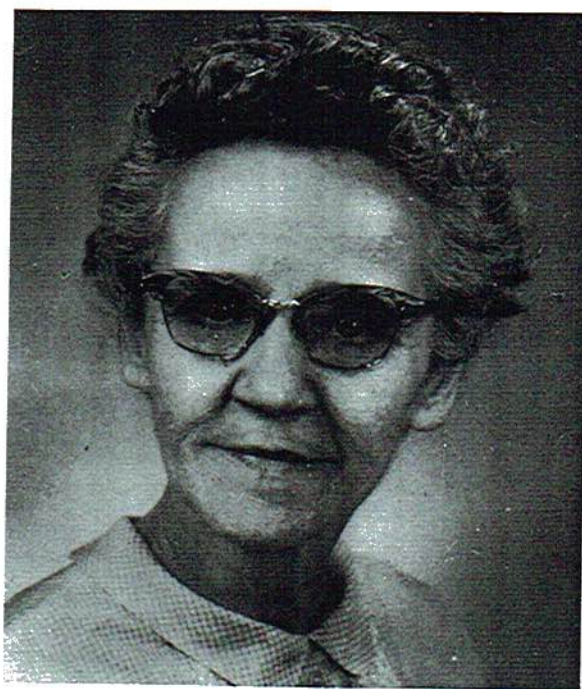


SENIOR CLASS OFFICERS

President: James Buckner  
Treasurer: Thelda Freeman

Vice-President: John Deerman  
Secretary: Linda Koger

*D  
e  
d  
i  
c  
a  
t  
i  
o  
n*



*M  
r  
s.*

*L  
i  
l  
l  
i  
a  
n*

*A  
r  
n  
o  
l  
d*

Just a few years ago we entered Pisgah's doors as children. At that time a woman entered our lives, a woman who was to help mold our characters and shape our futures. Through discipline and much needed guidance she helped us prepare for the time at hand. She taught us honor, personal integrity, and fair play.

Now, largely through her endeavor, we leave Pisgah as young men and women more qualified to shoulder the responsibilities of the coming years.

It is with pride that we, the Senior Class of 1964, dedicate our yearbook, *The Eagle*, to our teacher and friend, Mrs. Lillian Arnold.

De  
stu  
sou  
tha  
It  
she

tre  
ple  
a  
wa  
the  
all

of  
ins  
int  
the

obi



*Principal's Message*

*Cecil A. Bearden*

Dear Students:

No institution of learning is better than the students and faculty who make up its invisible soul. Its contribution to the world is no bigger than the vision and purposes of its inhabitants. It follows then that these important functions should be of the highest order.

It is our fond hope that all students who tread these halls will strive to attain a higher plane of academic achievement, to develop a more creative and purposeful attitude toward the future, and firmly resolve to use these skills in building a better tomorrow for all mankind.

It is the duty and obligation of the faculty of this institution of learning to attempt to instill in you high ideals which you will carry into the future with you to enrich your life and the lives of those around you.

We trust you will aid us in fulfilling this obligation.

Sincerely,

Cecil A. Bearden

Cecil A. Bearden  
Principal



*Superintendent's Message*

Greetings:

I congratulate you on the publication of this annual. I feel sure that you will spend many moments of pleasure in the years to come by referring to this publication.

Your time spent in school will be very beneficial to you in the future years. There is no substitute for a formal education. It will provide you the opportunity and training necessary to get established in your life's work. Your education, of course, will not cease when you get out of school, but it will be a continuous thing as long as you live. It is my sincere hope that you will never close your mind to learning.

I hope for all of you the best of success in life.

Yours sincerely,

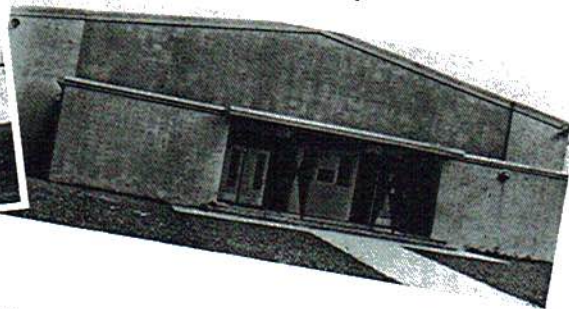
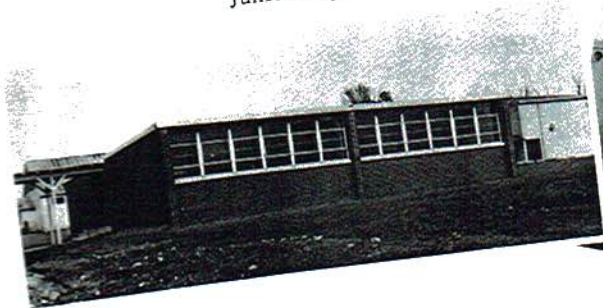
*A. A. Clemens*

A. A. Clemens  
Superintendent



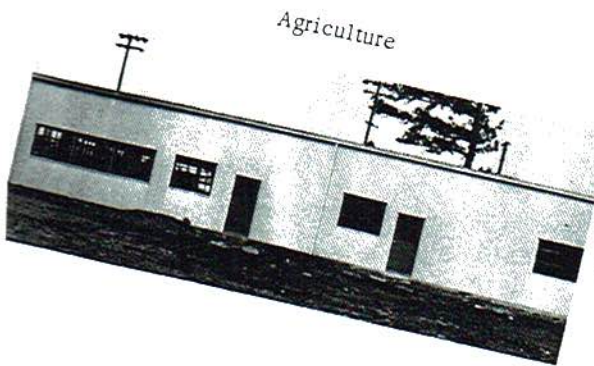
High School

Junior High

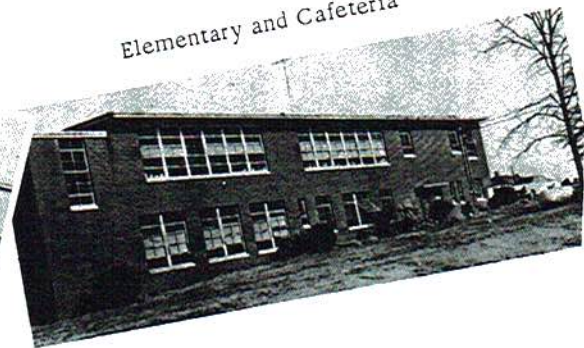


Gymnasium

## *Buildings*



Agriculture



Elementary and Cafeteria

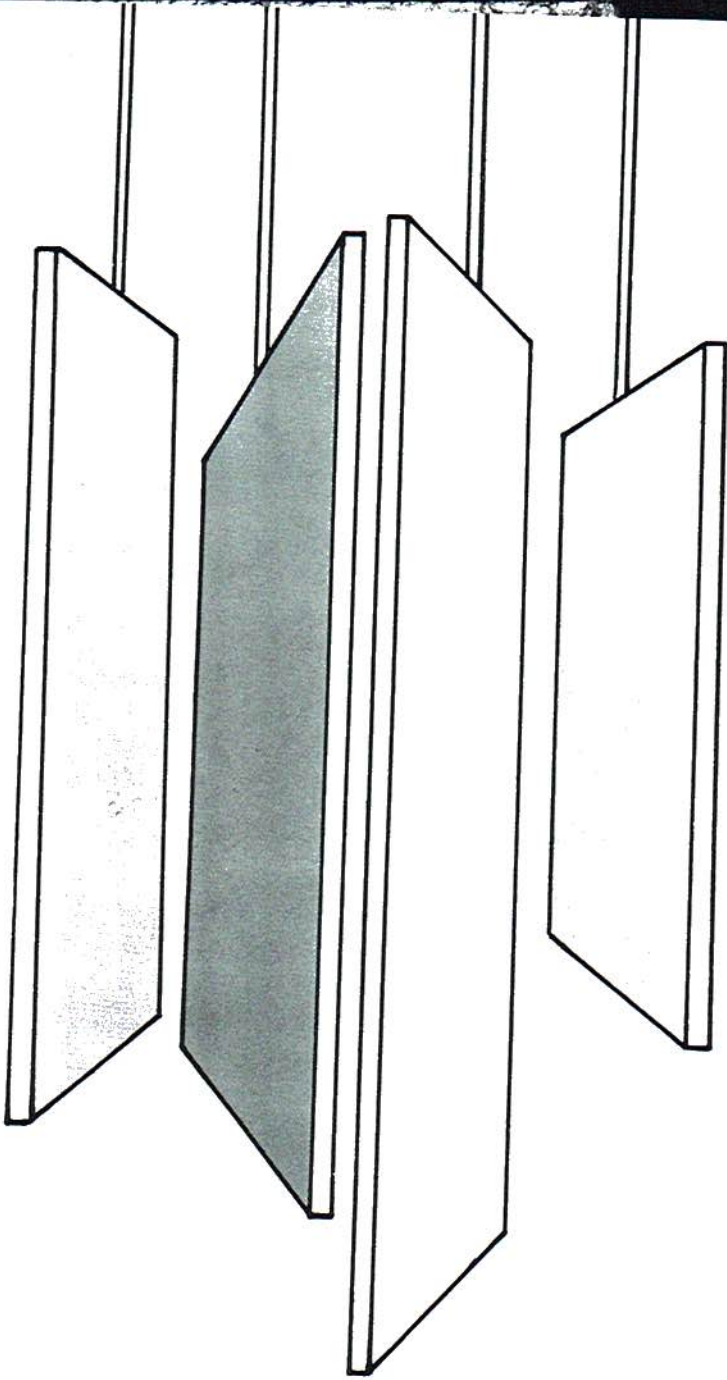
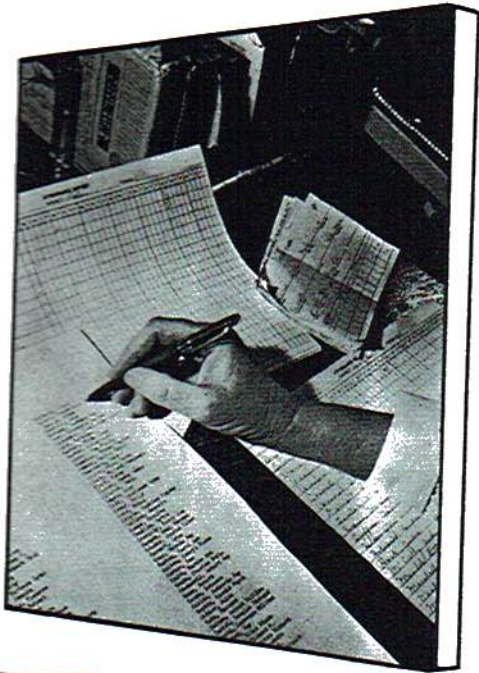


## The Eagle Staff

SPONSOR	-----	Mrs. Lillian Arnold
EDITOR	-----	Wanda Edwards
ASSISTANT EDITOR	-----	Patsy Buckner
BUSINESS MANAGER	-----	Judy Wheeler
CLASS EDITOR	-----	Sue Thompson
SPORTS EDITOR	-----	James Burgess
SNAPSHOT EDITORS	-----	Sherry Millican Thelda Freeman

## Message From the Staff

The EAGLE Staff of 1964 wishes to extend its appreciation to each individual, group or firm who has contributed either financially or personally to the publication of this annual. We feel that this year's EAGLE is quite an accomplishment for us, and we hope that you will enjoy it more each year of your life.



MR  
A.  
Ke  
Eng

# FACULTY

*...if you didn't talk so much I never know  
you were in my room. Maybe you'll have better luck  
than I did. - J.T.*

*True  
Mrs. Jewel*



MRS. LILLIAN  
ARNOLD  
A. B.  
Kentucky  
Wesleyan, U. C.  
English,  
Family Living



MR. PAUL  
COOLEY  
B. S.  
Jacksonville  
College  
P. E. ,  
Basketball  
Coach



MRS. ELIZABETH  
COOLEY  
B. S.  
Jacksonville  
College  
P. E. , English,  
History

*Elizabeth Cooley*



MRS. FLORA  
BURKHALTER  
B. S.  
Jacksonville  
College  
English,  
Social Studies



MRS. JEWEL  
WHEELER  
B. S.  
Jacksonville  
College  
Math



MR. PAUL  
TIDWELL  
B. A. , M. A.  
David Lipscomb,  
Peabody College  
Democracy,  
History

*Paul Tidwell*



MISS BETTY  
WHITE  
B. S.  
Jacksonville  
College  
Commercial  
Studies

*Miss Betty White*  
*in 1951 always*  
*at the University*



MR. SAM  
KENIMER  
B. S.  
Jacksonville  
College  
P. E. , Football  
Coach





MRS. DORIS  
SLATER  
B. S.  
Jacksonville  
College  
Home Economics



MR. JERRY  
MATTHEWS  
B. of M. E.  
Howard College  
English, Music  
History



MRS. MARJORIE  
HUTCHESON  
Jacksonville  
College  
Algebra, Math,  
Bookkeeping



MR. ERNEST  
PRUETT  
B. S., M. S.  
Auburn  
University  
Agricultural  
Education



MRS. SHIRLEY  
DEERMAN  
B. S.  
Jacksonville  
College  
History, P. E.,  
English



MRS. MARY LOU  
CLEMONS  
A. B.  
University of  
Alabama  
Science,  
Biology,  
Chemistry



MR. BRYCE  
SLATER  
B. S.  
Jacksonville  
College  
English,  
Science



MRS. BRENDA NIX  
B. S.  
Florence State  
College  
Math, Science,  
P. E.



MR. CLAUDE  
THORNHILL  
B. S.  
Jacksonville  
College  
Math, History



MISS EMMA  
MOORE  
Florence State  
College  
English, History



MRS. OVA  
COOPER  
B. S.  
Jacksonville  
College  
6th Grade



MRS. LOUISE  
SKINNER  
Jacksonville  
College  
5th Grade



MISS FAYE  
CARTER  
B. S.  
Jacksonville  
College  
4th Grade



MRS. OPAL  
SATTEFIELD  
Jacksonville  
College  
3rd Grade

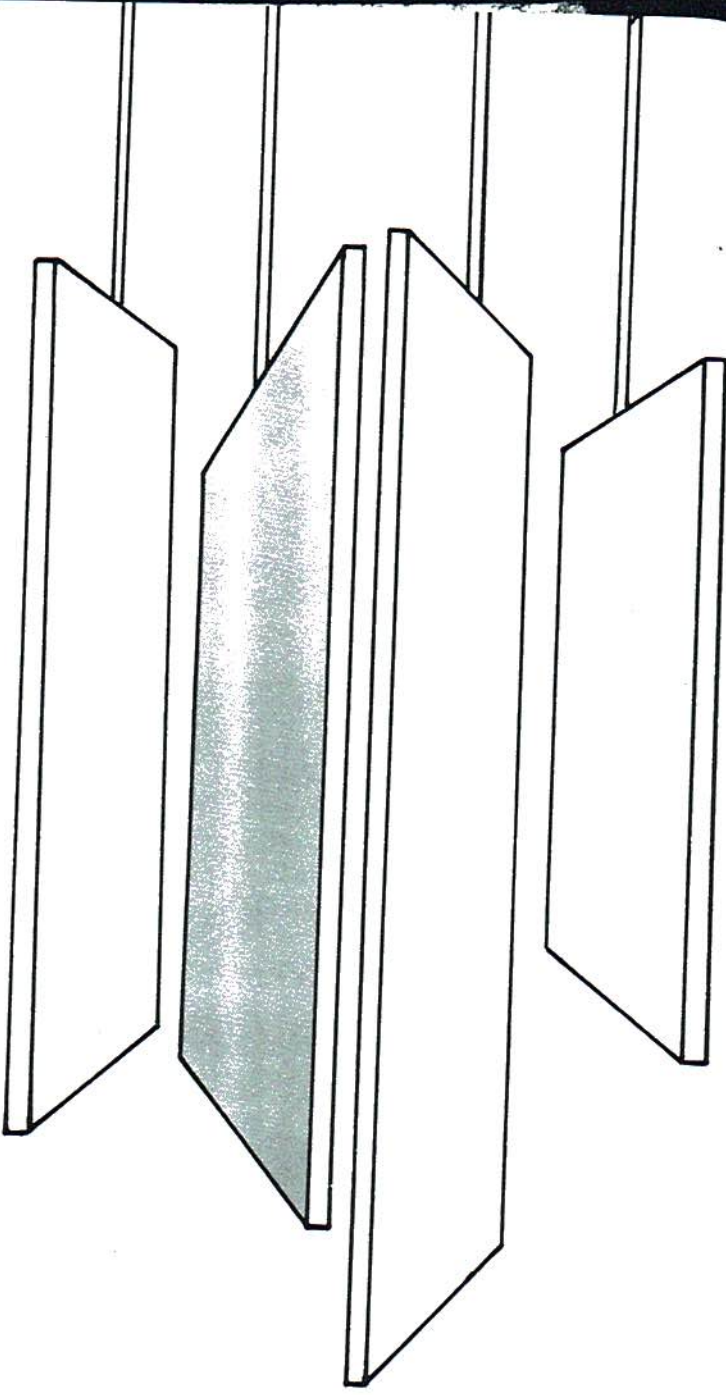
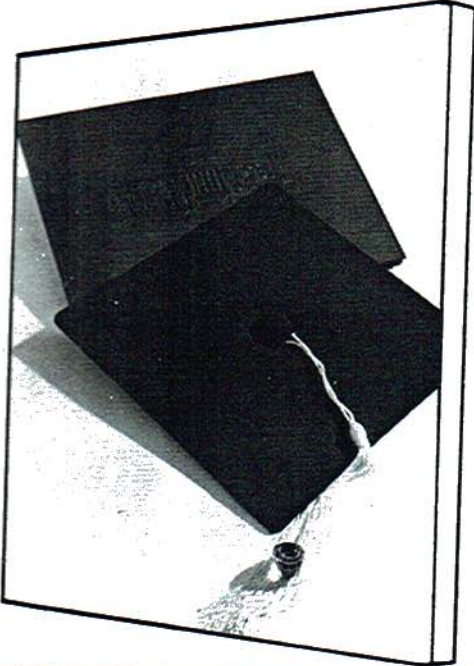


MRS. ABBY  
LANEY  
B. S.  
Jacksonville  
College  
2nd Grade



MISS IVA  
HUGHES  
B. S.  
Jacksonville  
College  
1st Grade

Handwritten initials or signature in the top right corner.



F. T  
3 -  
1: F  
3: 1  
Dra  
Staf  
sile

Be  
Gl  
Dr  
Sq  
pro

# SENIORS

*Best Wishes  
Susie*



SUSY DEERMAN  
F. T. A. -1, 2, 3; F. H. A. -1, 2, 3 - Historian-1; Cheerleader-1; Pep Squad-1, 2, 3; Glee Club 3; Lettermen's Club-1, 2, 3; Dramatic Club-3; Paper Staff-3. "A fair exterior is a silent recommendation."

*Buddley Gerson*



HOWARD RAYFORD LEWIS  
F. F. A. -1, 2, 3; Glee Club-2; Beta Club-2, 3; Pep Squad-1, 2, 3. "It is easy for men to talk one thing and think another."

JOHNNY SHELTON

Beta Club-3; Citizenship-3; Glee Club-2, 3; Paper Staff-3; Dramatics Club-2, 3; Pep Squad-1, 2, 3. "Toil says the proverb, is the sire of fame."



JOAN ROBINSON  
Citizenship-2, 3. "Be not too zealous; moderation is best in all things."

BEULAH CLARK

Glee Club-1, 2, 3; Dramatic-1, 2, 3; F. H. A. -1, 2, 3; Pep Squad-1, 2, 3. "Patience is the best remedy for every trouble."



*Best Wishes  
Johnny Shelton*



*Best Wishes  
Beulah Clark*



*lots of luck,  
Sherry Millican*

**SHERRY MILICAN**  
Citizenship-2,3; Beta-2,3;  
Lettermen's Club 2,3; F. H. A.  
-1, V. -Pres. -1; Dramatics-1,  
2; Glee Club-1; Cheerleader-  
2,3, Head-3; Annual Staff-3;  
Paper Staff-3; Library Club-2;  
Pep Squad-1. "It is a very  
hard undertaking to seek to  
please every body."

**BILLY SHELTON**  
Glee Club-1,2,3; Dramatics-  
1,2,3; F. T. A. -1; F. F. A. -1,  
3; Pep Squad-1,2,3. "No one  
gets rich quickly if he is hon-  
est."



*married Mike Phillips  
Sept 12, 1964*



*lots of luck  
Wanda*

*married Mike Phillips  
Sept 12, 1964*  
**WANDA EDWARDS**  
F. T. A. -1; Dramatics-1;  
Glee Club-1,2; Citizen-  
ship Club-2, Pres. -3;  
Beta-2, Secretary-3; An-  
nual Staff-3. "I grow old  
learning something new  
every day."



*married Elaine  
Sept 12, 1964*

**JAMES BUCKNER**  
F. F. A. -1; Glee Club 1,2,3;  
Beta-3; Citizenship-2,3; Class  
Pres. -2,3; Football and Bas-  
ketball-3. "It is only the  
ignorant who despise educa-  
tion."

**ELAINE CARROLL**  
Beta-2,3, Reporter-3; F. H. A. -  
1,2,3, V. -Pres. -3; Dramat-  
ics-1,2,3; Glee Club-1.  
"There is nothing permanent  
except change."

*married Harry B. Sept. 12, 1964*



*Best of luck,  
Elaine*

Elaine  
1964

Best wishes  
Edwina



EDWINA WHEELER  
F. H. A. Club-1, 2, 3; Glee  
Club-1, 2, 3; Citizenship Club-  
2, 3; Pep Squad-1, 2, 3; Paper  
Staff-3. "Manner, not gold,  
is woman's best adornment."

Mavis Julian Hall

Always Raymon



RAYMON OVERDEAR  
F. F. A. -1, 2, 3; Basketball-1;  
Pep Squad-1, 2, 3; F. T. A. -1,  
2, 3. "Everything that de-  
ceives may be said to en-  
chant."

BUDDY SKINNER  
F. F. A. -1, 2, 3; Basketball-1;  
F. T. A. -1, 2, 3; Pep Squad-1,  
2, 3. "We live, not as we wish  
to, but as we can."



LINDA KOGER  
Dramatics Club-1, 2, 3, Sec. -  
3; F. T. A. -1, 2, 3. Historian-  
3; F. H. A. -2, 3; Class Sec. -3.  
"Of all the animals, the boy  
is most unmanageable."

Always Carolyn



CAROLYNN SHRADER  
Dramatics-1, 2, 3; F. T. A. -  
1, 2, 3, V. -Pres. -2, Sec.  
and Treasurer-3; F. H. A. -  
2, 3, Sec. -3; Pep Squad-  
1, 2, 3; Citizenship-2, 3.  
"Of surpassing beauty and  
in the bloom of youth."



Always Buddy

R  
1, 2, 3;  
3; Class  
id Bas-  
the  
uca-

L  
. H. A. -  
mat-  
l.  
ment  
B, Sept. 12, 1964

cks  
we

*Frances Hicks*



FRANCES HICKS  
Library Club-1,2; Dramatic-1,2; Glee Club-1,2,3; F. H. A. -1; Pep Squad-1,2,3. "Man's best possession is a sympathetic wife."



BILL SAMPSON  
Citizenship-2,3; F. F. A. -1,2,3, Pres. -3; Pep Squad-1,2,3. "Second thoughts are ever wiser."



*Sonja Caperton*

DON BURKHALTER  
Football-1,2,3; Basketball-1,2,3; Track-2; Letterman's Club-2,3, Vice-Pres. -3; F. F. A. "Gymnastics as well as music should begin in early years."

CARLENE MCCARSON  
Glee Club-1,2; Beta Club-3; Citizenship Club-2,3; Library Club-3, Reporter; Class Treasurer-2; Pep Squad-1,2,3; F. T. A. -1. "Moderation, the noblest gift of Heaven."

*Don Burkhalter*



SONJA CAPERTON  
F. H. A. -1,2,3; Glee Club -1; Dramatic-3; Beta-3; F. T. A. -2,3, Pres. -3; Paper Staff-3; Pep Squad-1,2,3. "To be loved, be lovable."

*Carlene McC Carson*



*Carlene McC Carson*



*Always Patricia*

PATRICIA FREEMAN  
Citizenship Club-2, 3; Beta  
Club-3. "Little friends may  
prove great friends."



*Jack Wheeler*

JACK WHEELER  
Paper Staff-2, 3; Glee Club-2,  
3; Beta Club-2, 3; Citizen-  
ship Club-2, 3; Pep Squad-1,  
2, 3; Dramatics Club-3. "We  
often despise what is most  
useful to us."

*Always Lavelda*



LORRAINE HARDEEMAN  
Dramatics-1, 2, 3; Glee Club-  
1, 2, 3; F. H. A. -1, 2, 3; Pep  
Squad-1, 2, 3. "There is  
someone always worse off than  
yourself."



*Always Larry*

LARRY WINTERS  
Citizenship Club-2, 3; F. F. A. -  
1, 2, 3, Sec. -3; Pep Squad-1,  
2, 3. "When a man dies, all  
his glory among men dies  
also."

LAVELDA KAY  
Pep Squad-1, 2, 3; F. H. A.  
-1; Citizenship-2, 3.  
"Please all, and you  
please none."



*Lavelda Kay*

A. -1, 2,  
-1, 2, 3.  
ever

DN  
Club-3;  
Library  
s  
d-1, 2,  
ration,  
ren."





**PATSY BUCKNER**  
 Beta-2, 3, Pres. -3; Citizen-  
 ship Club-2, 3; Lettermen's  
 Club-2, 3, Treas. -3; F. T. A. -  
 1; F. H. A. -1; Dramatics-1, 2,  
 Treas. -1; Cheerleader-2; Li-  
 brary Club-3, Pres. -3; Pep  
 Squad-1, 3; Paper Staff-3; An-  
 nual Staff-3. "By suffering  
 comes wisdom."

**DWIGHT MEEKS**  
 "A woman is a necessary evil,  
 but he that gets the most  
 tolerable one is lucky."



**MARY RUTH HALL**  
 Citizenship Club-3; Dra-  
 matics Club-1, 2, 3, V. -  
 Pres. -2; F. H. A. -1, 2; Pep  
 Squad; Library Club-3;  
 Glee Club-1. "Fortune is  
 a god and rules men's  
 life."



**JUNIOR ROLLINS**  
 F. F. A. -1, 2, 3; Glee Club-3;  
 F. T. A. -3; Pep Squad-1, 2, 3.  
 "We would often be sorry if  
 our wishes were granted."

**GLENDA TRIPP**  
 Library Club-1, 2, 3; Pep Squad  
 -1, 2, 3; F. H. A. -1. "He who  
 has a thousand friends has not  
 a friend to spare."



I  
 Dram:  
 zenshi  
 not ho  
 how w

Beta-  
 F. T.  
 mati  
 2, 3.  
 a kir





*Always Steve*

LOWETTA SMITH  
Dramatics-3; F. T. A. -3; Citi-  
zenship Club-2,3. "It matters  
not how long you live, but  
how well."



*Always Steve Patterson*

STEVE PATTERSON  
F. F. A. -1,2,3; Pep Squad-1,  
2,3; Beta-3. "You can tell  
the character of every man  
when you see how he receives  
praise."



ANN AULTMAN  
Beta-2,3; Citizenship Club-3;  
F. T. A. -2; F. H. A. -1; Dra-  
matics Club-3; Pep Squad-1,  
2,3. "A good mind possesses  
a kingdom."

*Not a Helen*

MACK HUGHES  
Citizenship Club-2,3; F. F. A.  
-1; Football-2,3. "Man is a  
reasoning animal."



*Always Ann*

HELEN GUFFEY  
F. T. A. -2; Citizenship  
Club-3; Beta Club-3; Dra-  
matics-3; Pep Squad-2,3.  
"It is quality rather than  
quantity that matters."



*Best friend*



ANN CAPERTON  
F. H. A. -1; Library Club-1.  
"Things are not always what  
they seem."



RALPH WEST  
Glee Club-2,3; Letterman's  
Club-2,3; Citizenship Club 2,  
3; F. F. A. -3; Dramatics Club-  
3. "Nothing is impossible to  
a willing heart."

TED ALLISON  
F. F. A. -1,2,3; Pep Squad-1,  
2,3; Football-1. "An honest  
man's word is as good as his  
bond."

LINDA BRYANT  
Dramatics-1,2,3; Glee Club-  
1,3; Beta Club-3; F. H. A. -1;  
Citizenship Club-3; F. T. A. -  
2; Pep Squad-1,2,3. "And  
had a face like a blessing."



LINDA FOSHEE  
Dramatics-1,2; Pep Squad  
-1,2,3; Beta-2,3; Citi-  
zenship Club-2,3; F. T. A. -  
-1. "Little said is soon  
amended."



F  
Dra  
bra  
sho  
enc  
hoi

Foot  
ketb  
1,2,  
Citi:  
allo  
frien

more



**BRENDA PENNINGTON**  
 Dramatics-1; F. H. A. -1; Library-3; Pep Squad-1, 2. "The short period of life is long enough for living well and honourably."



**DAVID MILLICAN**  
 Football-1, 2, 3-Capt. -3; Track-2; Letterman's Club-2, 3-Pres. -3; Dramatics Club-3-V. -Pres.; F. F. A. -1. "A woman should be seen, not heard."



**SUE THOMPSON**  
 F. H. A. -1, 2; Glee Club-1, 2-Treas. -2; Dramatics-1; Beta-2, 3; V. -Pres. -3; Library Club-2, 3; Pres. -2; Citizenship Club-2, 3-Sec. -3; Paper Staff-3; Annual Staff-3; Pep Squad-2, 3. "Wonders are many and none is more wonderful than man."



**LINDA TALLEY**  
 Beta Club-2, 3; Citizenship Club-2, 3; Library Club-1, 2, 3; Pep Squad-1, 2, 3; F. H. A. -1. "We are interested in others when they are interested in us."

T  
 erman's  
 ip Club 2,  
 atics Club-  
 ssible to

NT  
 lee Club-  
 H. A. -1;  
 F. T. A. -  
 "And  
 ssing."





*"Best of Luck"  
Peggy*

PEGGY ANDERSON  
Beta Club-1; Library-2; Sec.  
and Treas. Citizenship-1;  
F. H. A. -1. "Great persons  
are able to do great kindnes-  
ses."



*Best of Luck  
Jean*



JAMES BURGESS  
Beta-2, 3; Citizenship-2, 3;  
Letterman's-2, 3; F. F. A. -1;  
Glee Club-2; Paper Staff-3;  
Annual Staff-3; Football Man-  
ager-2, 3; Basketball Manager-  
2, 3. "Nobility is the one, the  
only virtue."

JIMMY COOK  
F. F. A. -1, 3; Pep Squad 1, 2, 3.  
"It takes a long time to bring  
excellence to maturity."



*Jimmy  
Cook*

MARY MOORE  
Citizenship-2, 3; Glee Club-  
1, 2, 3; Dramatics-1, 2, 3;  
Pep Squad-1; F. T. A. -1.  
"Moderation is best to avoid  
all extremes."



*Best of Luck  
Mary*

"Go  
arc  
bles

"La  
wit  
alo

*Best of Luck  
Mary*



*Sydney*

SYDNEY WYCOFF

"Good health and good sense are two of life's greatest blessings."



*James Pyborn*

JAMES PYBORN

"The man who makes the experiment deservedly claims the honor and the reward."



*Ann Tinker*

ANN TINKER

F. H. A. 2, 3. "Beauty provoketh thieves sooner than gold."



*Best of every thing  
Rodger*

PEGGY ROBERTS

F. H. A. 1, 2. "A good reputation is more valuable than money."



*Love Anne*

SS  
-2, 3;  
A. -1;  
Staff-3;  
ball Man-  
Manager-  
one, the

enship  
-1; Li-  
-1, 2;  
T. A. -1.  
n you



*Best of luck  
Shelia*

SHELIA YORK  
"Love looks not with the eyes,  
but with the mind."



RAYBURN WEST  
Citizenship 2, 3. "The  
strength of twenty men."



*Always - Joyce*

THELDA FREEMAN  
Glee Club 1, 2 - Sec.; Dra-  
matics 1, 2; Pep Squad 1, 2;  
F. H. A. 1, 2, 3; Citizenship  
2, 3 - Treasurer; Senior Treas-  
urer; Annual Staff; Citizenship  
Girl. "Fair and softly goes  
far."

DARWIN LESTER  
"I am not in the roll of common  
men."



*Good Luck!  
Darwin*

JAYNE FELDER  
Transfer Student; Choir 1;  
F. H. A. 2, 3; Red Cross 1,  
2; Tri-Hi-Y 2; Dramatics  
3. "Frailty, thy name is  
women."

*Thelda Freeman*



*Best of  
luck*

Li  
2.  
P.  
Si  
1.  
d  
re



JUDI WHEELER

Library Club 1, 2, 3; Beta Club 2, 3; Glee Club 1, 2, 3; School Paper - Editor - 3; Annual Staff; F. H. A. 1, 2; Pep Squad 1, 2, 3; Citizenship 2, 3. "To do two things at once is to do neither."



*Best wishes  
Ronnie*

RONNIE HENDRICKS

F. F. A. 1, 2, 3; Basketball 1. "As men, we are all equal in the presence of death."



*Charlotte  
Sutton*

MARTHA PRECISE

Library Club 2; Citizenship Club 2, 3; 4-H Club 1, 2, 3 - Pres. 3. "Lost time is never found again."

RAYMOND BASS

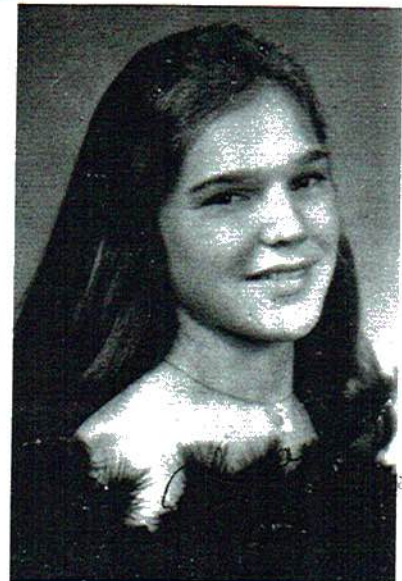
"As upright as the cedar."



*Best Wishes  
and good luck to  
a Pioneer*

CHARLOTTE SUTTON

Glee Club 2, 3; F. H. A. 1, 2, 3; Pep Squad 1, 2, 3. "No man is happy who does not think himself so."



EST  
"The  
men."

AN  
; Dra-  
d 1, 2;  
nship  
r Treas-  
itizenship  
goes





*Always  
Barbara  
Glover*

BARBARA GLOVER  
"Old fashions please me best."



*Larry Knight*

LARRY KNIGHT  
Football 1, 2; Track 2, 3; Let-  
termen's Club 2, 3; Dramatic  
Club Pres. 3; Junior Class  
Vice-Pres. "Fortune, good  
night smile once more; turn thy  
wheel."



*Bobby Reeves*

BOBBY REEVES  
Citizenship Club 2, 3; F. F. A.  
1, 2, 3; Pep Squad 1, 2, 3. "I  
will be the pattern of all  
patience."

JOYCE GARDNER  
Basketball 1, 2. "Be wisely  
worldly, be not worldly wise."



*Bobby  
Reeves*

DIANNE TRAVIS  
F. H. A. 1, 2; Citizenship  
2, 3. "The hands that have  
made you fair have made  
you good."



*Dianne Travis*

Beta  
Club  
lane

Dr.  
we  
my



IGHT  
k 2, 3; Let-  
Dramatic  
r Class  
ne, good  
ore; turn thy

BONNIE BREWTON  
Beta Club 2, 3; Citizenship  
Club 2, 3. "The sweetest gar-  
land to the sweetest maid."

*Jean Roberts*

TOMMY HAWES  
F. F. A. 1, 3; Citizenship Club  
2, 3; Pep Squad 1, 2, 3. "The  
wisest man is he who does not  
fancy that he is so at all."

DNER  
Be wisely  
ordly wise."

HERBERT MURRAY  
Dramatics Club 3. "That is  
well said as if I had said it  
myself."



PALMER ROBERTS  
F. H. A. 1, 2; Citizenship  
Club 2, 3. "I do hate to un-  
quiet at home."

*Palmer Roberts*



JEAN ROBERTS  
F. H. A. 1, 2; Citizenship  
Club 2, 3. "By the work,  
one knows the workman."

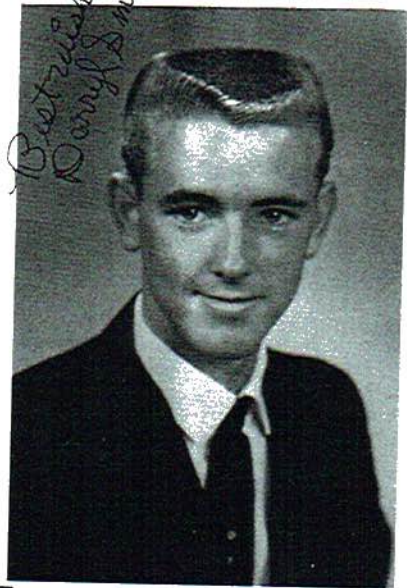


*Jean Roberts*



BONNIE PEEK

Glee Club 1, 2, 3; F. H. A. 1, 2; Citizenship Club 2, 3; Dramatics Club 2, 3; Pep Squad 1, 2, 3. "Her hair will be of what color it please God."



DARRYL SMITH

F. F. A. 1, 2, 3; Pep Squad 1, 2, 3. "No legacy is so rich as honesty."



MARY SMITH

F. H. A. 1, 2, 3, Pres. 3; Dramatic 1, 2, 3, Treasurer 3; Glee Club 1; Pep Squad 1, 2, 3; F. T. A. 2; Citizenship 2, 3. "Usually we praise only to be praised."

CALVIN GANT

F. F. A. 1, 2, 3. "Wit and wisdom are born with a man."



SANDRA GIFFORD

Cheerleader 1, 3, Head 3; Library Club 1, 2; Dramatics Club 1, 2; Lettermen's Club 1, 2, 3; F. H. A. 1; Pep Squad 2; Miss PHS; Homecoming Queen 2. "More lovely than Pandora."





*Lacrisha Hall*

LACRISHA HALL

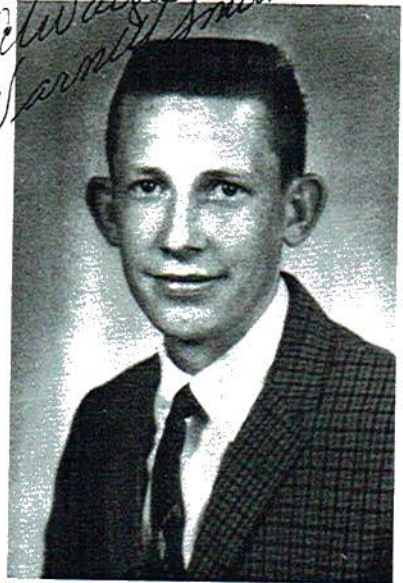
F. T. A. 1, 2; Dramatics 1, 2; Beta 2, 3; Citizenship 2, 3; Pep Squad 1, 2, 3. "Here is a dear and true industrious friend."



*Mavis Johnny Ragan*

BILL GAMBLE

Transfer Student; Band 1, 2, 3; Latin Club 1, 2, 3; Science 1. "Too much and too little education hinder the mind."



*Always Varnell Smith*

VARNELL SMITH

"Never promise more than you can perform."



ELMA FAY LAMBERT  
Dramatics 1, 2; Pep Squad 1, 2, 3; F. H. A. 1, 2. "It matters not how long you live but how well."



*Always Sue*  
*Mavis Jerry Ragan*

ITH  
Squad 1,  
rich as

H  
3; Dra-  
er 3;  
ad 1, 2,  
ship 2, 3,  
ly to be

*Smith*

*Always Jerry Moore*



JERRY MOORE  
Football 1, 2, 3; Track 2, 3;  
Lettermen's Club 2, 3; F. F. A.  
1. "Will and Intellect are  
one and the same thing."



*John Deerman*

JOHN DEERMAN  
Glee Club 2, 3; F. T. A. 2, 3;  
F. F. A. 1, 3; Paper Staff 3;  
Basketball 1, 2, 3; Lettermen's  
Club 3. "A rolling stone  
gathers no moss."



*Lucille Knight*

JIM ROBERTS  
"A man can die but once; we  
owe God a death."

LARRY LANEY  
F. F. A. 1, 2, 3; Citizenship  
Club 2, 3; Football 3. "For  
we who live to please must  
please to live."



*Jim Roberts*

LUCILLE KNIGHT  
F. F. A. 1, 2; F. T. A. 1, 2;  
Glee Club 1, 2; Library  
Club 2. "Two heads are  
better than one."



*Larry Laney*

*John Deerman*

Tr.  
Fo  
og  
ou



**DICK FORD**  
 Transfer Student; Latin Club 1;  
 Football 1; Science Club; Biol-  
 ogy Club. "Distinction with-  
 out a difference."

*Bill Moore*



**BILL MOORE**  
 "Sometimes I sit and think,  
 mostly I sit."

**Absent when  
 pictures were made**



**"F. F. A. SWEETHEART"**  
 Linda Koger

**"CITIZENSHIP GIRL"**  
 Thelda Freeman



**BETTY TOWNSEND**  
 "Merrily, merrily shall I  
 live."



**"BABY CONTEST WINNER"**  
 Annette Johnson





Sandra Gifford      BEST LOOKING      David Millican

Who said we weren't the best looking?

H  
a  
l  
l



Linda Koger      MOST POPULAR      John Deerman

No date and it's Saturday night!!!

f



Judy Wheeler      MOST TALENTED      James Buckner

We finally learned to play "Chop Sticks."

F  
a  
m  
e



Carolyn Shrader      NEATEST      Buddy Skinner

If I live through this I'll be lucky!



James MOST DEPENDABLE Thelda  
Buckner Freeman

Who said we wouldn't have enough money for our class trip?



Patsy MOST LIKELY James  
Buckner TO SUCCEED Burgess

Do you think we will ever get our bills paid?



Sidney MOST STUDIOUS James  
Wycoff Burgess

Be prepared for the next test is our motto!



Mary QUIETEST Bill  
Moore Gamble

We aren't as quiet as they think.

H  
a  
l  
l  
o  
f

F  
a  
m  
e

John  
Deerman

Buddy  
Skinner





Rayford  
Lewis

WITTIEST

Susy  
Deermen

Pretty clever, huh!



Roger  
Stone

CLASS GRUMBLERS

Beulah  
Clark

Why do we always get the dirty work?



Patsy  
Buckner

MOST ATHLETIC

Don  
Burkhalter

If you let me fall, you'll be sorry!

TOO BUSY



PHOTO  
Not Available

Elma  
Lambert

FLIRTIEST

Raymon  
Overdeer

H  
a  
l  
l  
o  
f  
F  
a  
m  
e





PA EDWARDS



PATSY BUCKNER



SUE THOMPSON



JAMES BURGESS



JUDY WHEELER



JAMES R



MILLER



THELMA FREEMAN



RAYFORD LEWIS



MARTHA PRECISE



BILL GAMBLE



STONE



MARY SMITH



BILL SAMPSON



BEULAH CLARK



DIAN WETRAVIS



WILSON



DWIGHT WEEKS



JOHN DEERMAN



CAROLYN SHRADER



RAYMOND WEST



WINTERS



CARLENE MCKAYSON



TED ALLISON



SANDRA GIFFARD



TOMMY HAWES



ROBERTS



DARWIN LESTER



LERRAINE HAFDEMAN



DON BURKHALTER



ELAINE CARROLL

CAN YOU IMAGINE???

Don Burkhalter

Raymond Deer



Johnny Shelton



Ann Tucker



Billy Shelton



Calvin Grant



Larrisha Hall



MOORE



Linda Koger



Mack Hughes



Sean White



Laurel & Kay



Jack Wheeler



Robins



Larry Waney



Sonia Rapert



Jerry Moore



Ann Caperton



Harry Knight



G. G. G. G.



Elma Lambert



Steve Patterson



Charlotte Sutton



Tommy Hawes



Bonnie Brew



David Milligan



Frances Higgs



James Buckner



Jane Felder



Dick Ford



Dina Wheeler



Jean Roberts



Missy Anderson



Ralph West



Lucille Knight

"DO YOU BELIEVE IT?"



Kacrisa Hall



MOORE



MARY HALL



MARY MOORE



Bobby Smith



Kawetta Smith



ACK Wheeler



FOOTMAN



Wanda Bryant



Palmer Roberts



Bobby Keever



Brenda Pennington



GARRY KNIGHT



GARDNER



SUSY DEERMAN



Patricia Freeman



Wanda



Glenda Tripp



BONNIE BREW



ACK



DARRELL SMITH



LINDA FOSHEE



Wanda



ACK FORD



Wanda



LUCILLE KNIGHT





DON'T TELL ME  
WHAT BRAND TO  
SMOKE!!!!

IT'S  
THIS  
MR.  
B.



Yipes!



NO  
BOYS  
AVAIL  
ABL



LOOKING FOR  
SOMETHING, GIRLS!



BLAH!



IN A HURRY!



THE LO  
LOST  
Be



"LOOK"

LOVE YOU



LARRY did you  
HIT him?????



NET  
MR.  
← Cooley!



WOUN ANYONE like to  
give (S) BEAUTIFUL girls  
A ride?



I REALLY DON'T



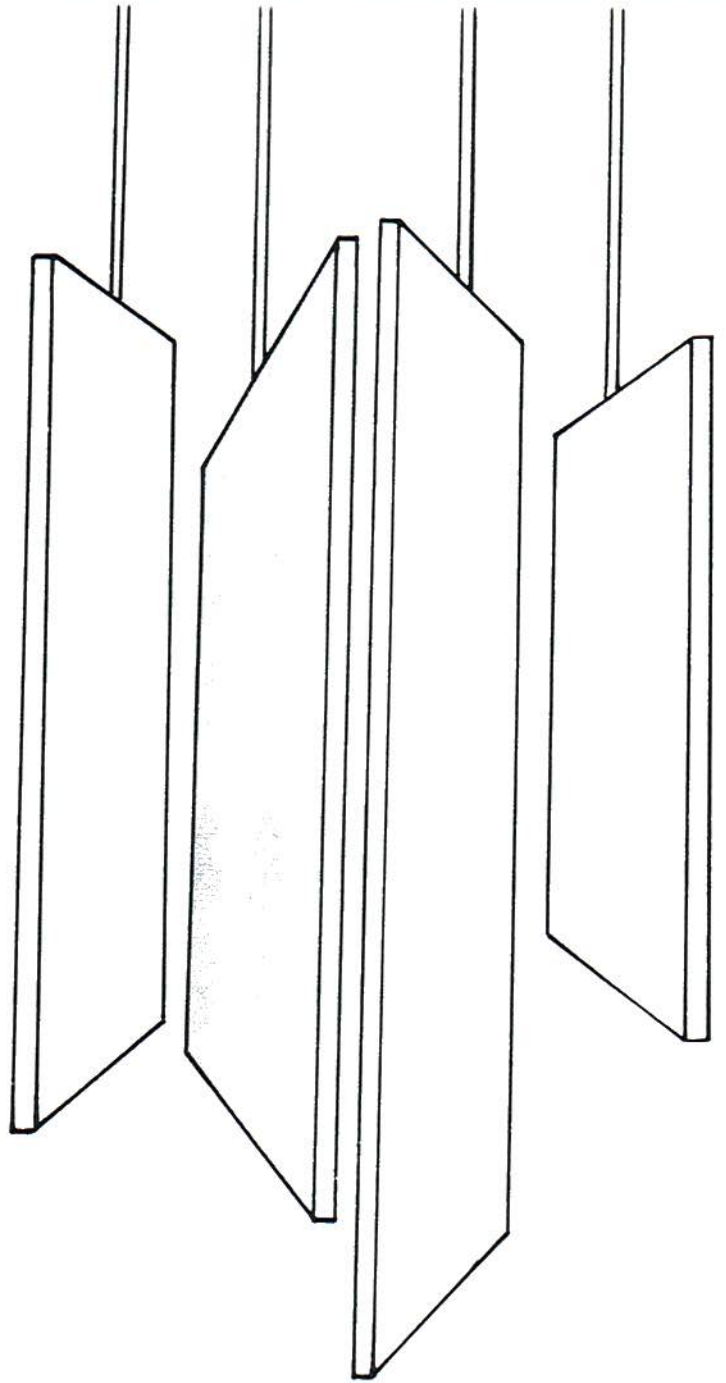
5!  
NO  
Boys  
AVAIL-  
ABLE



"THE LO  
LOST Be



"HEL



# JUNIORS



Patsy Barrentine



C. D. Wright



Sandra White



Jackie Anderson



Glenda Lowrey



Dennis Hicks



Sue Brewton



James Brown



Carolyn Joiner



Reginald Wilkes



Shirley Wotier



Jearl Smith



Anderson



Brenda Tipton



Gerald Brookshire



Linda Shelton



Perry Crawford



Brown



Mary Burkhalter



Mike Cooley



Sherry Skelton



Larry Tiffin



Smith



Paulette Jenkins



Paul Underwood



Judy Peek



Edward Hilley





Wallace Tinker



Sandra Knight



Mike Davis



Barbara Goolsby



Larry Joe Lyda



Cynthia Lester



Tim Blankenship



Nancy Allen



Loyce Callaham



Sandra Farmer



David Jones



Pat Garren



oolsby



Joan Ballard



Richard Wheeler



Pat Barnett



Pat Roberts



Allen



Rachel Moore



Arvel Harris



Shiela Shiflett



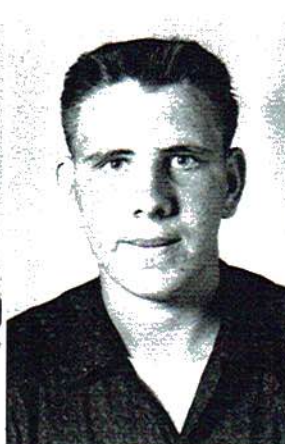
Johnny Johnson



en



Brenda Williams



Bobby Shrader



Glenda Smith



Harold Haynes



Floyd Collins



Mary Bain



Barry Pickett



Shelby Roden



Waylon Moore



Robbie Smith



Eddie Bain



Linda Watson



Melvin Gilbert



Ann Hampton



Bill McGriff



Janis Shrader



by Roden



Jan Webster



Zackie Gant



Carolyn Hoge



Milton Smith



Watson



Laraine Wilson



Danny McBryar



Patsy Arnold



Billy Guffey



der



Faye Deerman



Bobby McCord



Lorene Conoway



Leroy Richey



Larry Plemons



Judy Phillips



Bruce Powell



Judy Travis



Johnny Kendrix



Donna Vaughn



James Posey



Maggie White



Reba Townson



Peggy Jackson



Arnell Tripp



Christine Roberts



Ronette Sloan



Jo Dell Edmonds



Levoda Sloan



Margaret Tripp



Latricia Phillips



Barbara Wright



Katherine Higdon



Glenda Liles



Faye Vance

avis

White

berts



Erma Gant



Herbert Tripp



Barbara Carter



Bobby Satterfield



Juanita Medlock



Jerry Jeffery



Sheila Lester



John Roberts



Marie Powell



Ronnie Lewis



Linda Carlton



Harlon Headrick



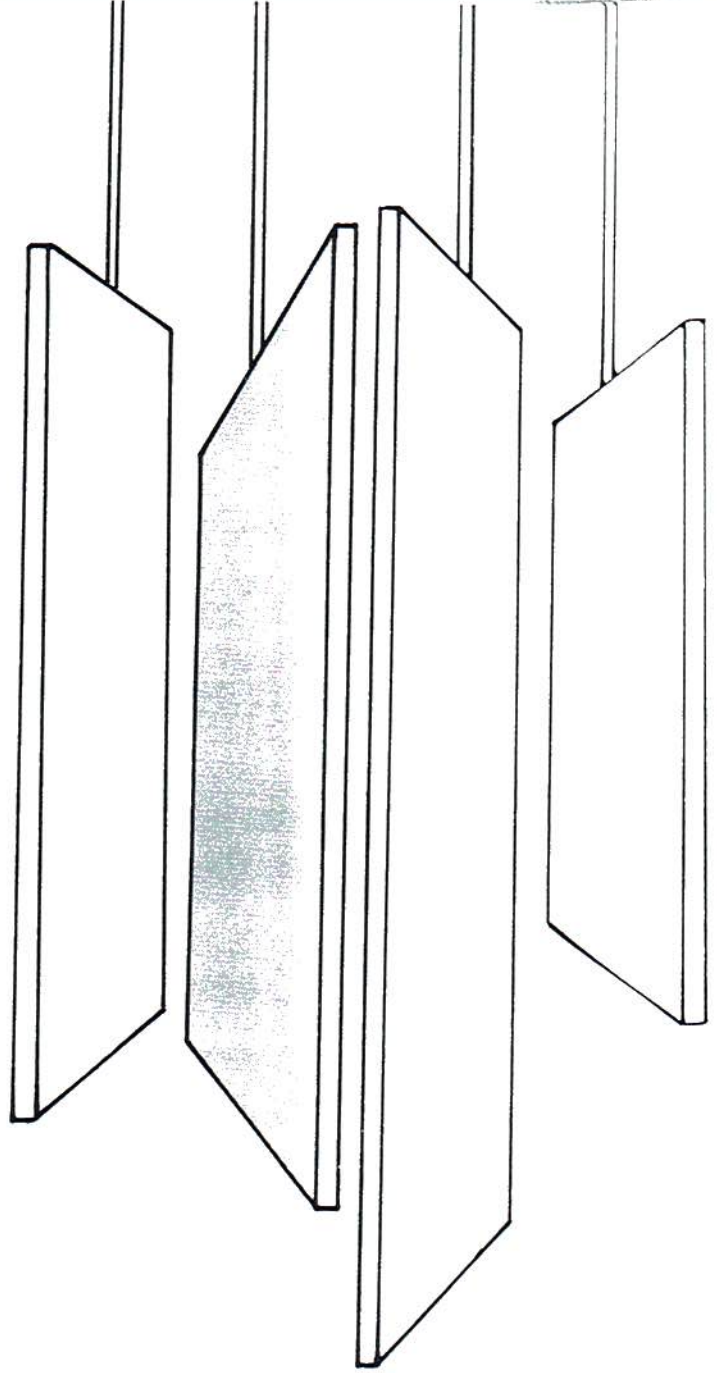
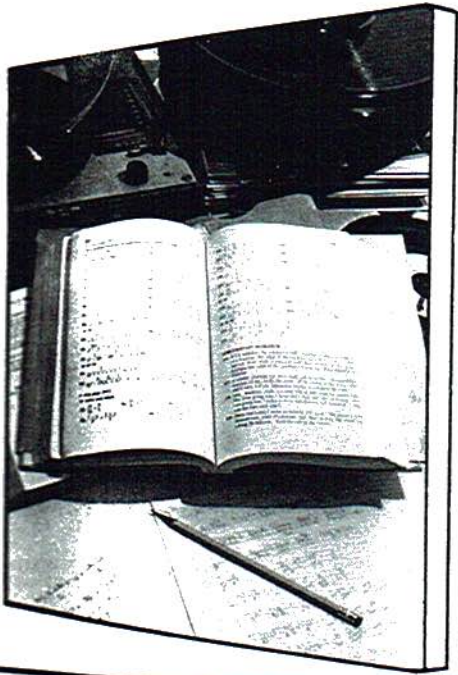
field



ts



rick



---

# SOPHOMORES





Donald Gilbert



Barbara White



Lynne Wooden



Ann Wornack



Mildred Wright



William Dalton



Martha Spears



Dale Crawford



Levoid White



Edna Kilgore



James Edwards



Glenda Tiffin



Juanita Smith



Clifford Millican



Linda Posey



Bobby Barnes



nack



Robert Wheeler



Della Feltman



Lee Whisenand



Maggie Bass



wford



Stella Feltmon



Harold Sampson



Shirley Webster



Jim Camp



riffin



Bruce Pickett



Julia Wycoff



Edward Anderson



Sharon Stone



es



Shelia Brookshire



Burkett Pendagrass



Bea W. ...



Eddie Rains



Quintis Smith



Phyllis Smith



Gary Porter



Ann Grant



Carol Holloway



Frankie Starkey



Carol Story



Lamar Starkey



Wilburn Shirley



Pamelia Clark



John Young



Judy Garren



Dale Whisenant



Marty Bowen



Sue Dudley



Kazira Temple



rant



Rickey Townsel



Helen Brown



Rayford Garren



Barbara Moore



tarkey



Marsha Lee



Jackie Shankles



Brenda York



Tommy Ryan



en



Junior Satterfield



Nancy Melton



Maylon Shankles



Faye Smith



ple



Barbara Rollins



Wayne Dunn



Marsha Edmonds



James Simms



Judy Rowell



Charles Hilley



Joan Seabolt



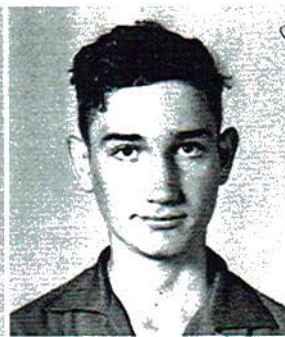
Lawrence Paschal



Billy Eller



Pat Dehart



Harold Mountain



Linda McCamy



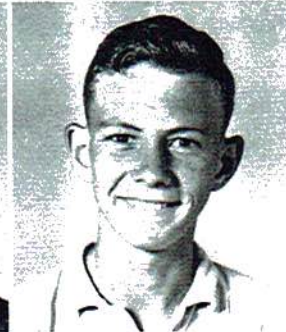
Carlene Ragsdale



Wayne Davis



Eleanor Headrick



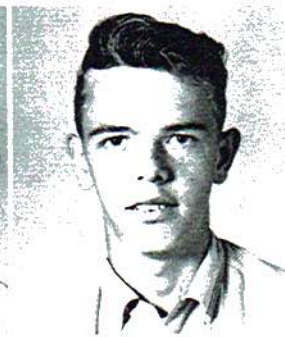
Renae Rollins



Billy Darwin



Phyllis Brown



Jerry Smith



Geraldine Ferguson



Larry Satterfield



Jackie Brown



James Wallace



Yvonne Lambert



Judy Gann



Kenneth West



Sherralynn Lea



Allen Eller



Earl Bryant



Joyce Evans



Bobby Carter



Andra Maples



Orpah Roden



Dale Stone



Dianne Gamble



Kenneth Wilson

Judy  
Su:

chal

amy

ns

son



J. D. Smalley



Sharon Smith



Tommy Decker



Phyllis Riddle



Linda McCormick



Max Brewster



Wanda Monor



Barry Pope



Johnny Goings



Ann Durham



Dennis Chapman



Frances Shaw



Patsy Lee



Harry Laney



Joan Hill



Alfred Murphy



iddle



James Gass



Shirley Burgess



Gerald Venable



Sara Crawford



ope



Gail Ellis



Jerry Lacy



Kathy Brewster



J. R. Tripp



aw



Ronald Callahan



Paula Aultman



Leon Evans



Erlene Atchley



phy



Betty Barrentine



Morris Gant



Patty Martin



Larry Johnson





*Pisgah High School's Chefs'*

Mrs. Wheeler   Mrs. Shavers   Mrs. Moses   Mrs. Young



*Pisgah High School's Chief Executive*

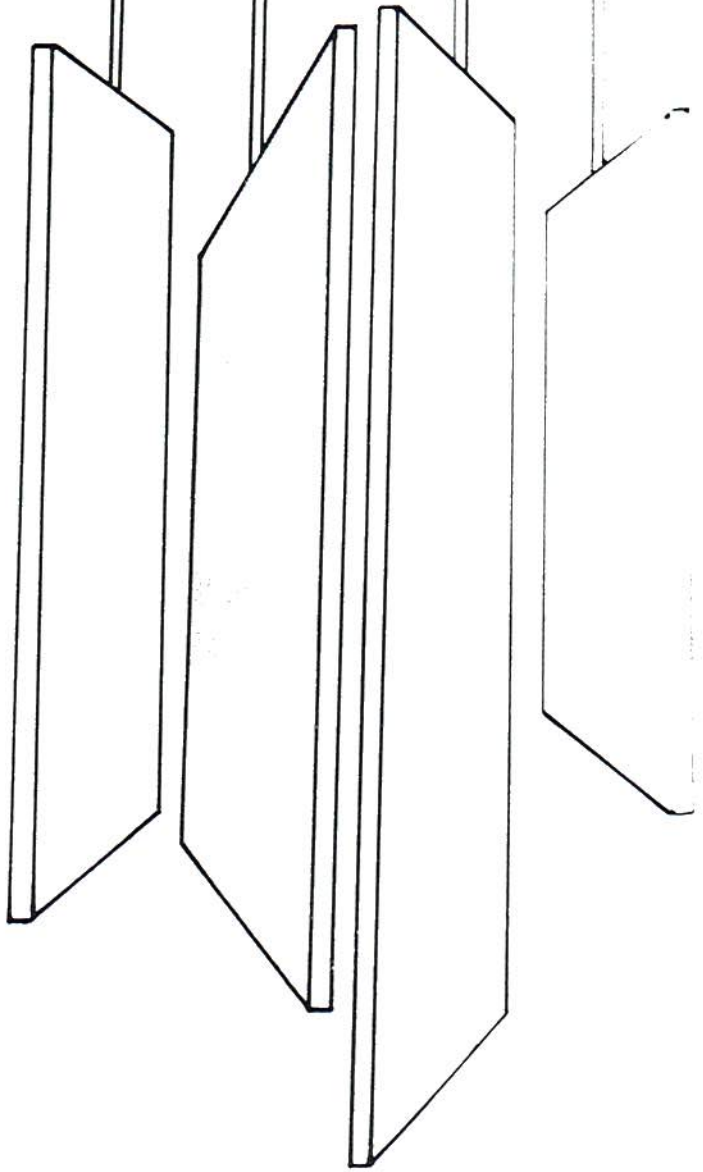
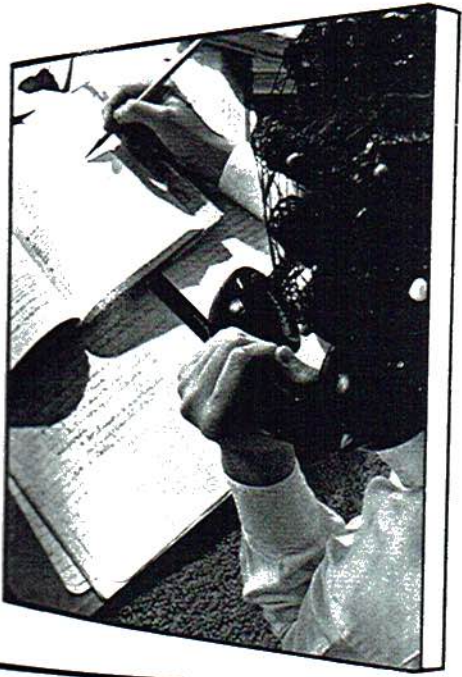
Mr. Bearden



*Some of Pisgah High School's Chauffeurs'*

Mr. Lewis   Mr. Kuykendall   Mr. Brewster   Mr. Summers   Mr. Shelton

*pre young*



---

---

# JUNIOR HIGH

# Junior III



Angela Lester  
Brenda Haynes  
David Gamble  
Kathy Roden



Myra Tanner  
Larry Aultman  
Molly Townsen  
Delane Gorham  
Rebecca Patterson

James Darwin  
Patricia Boyd  
Madison Richey  
Ira Copeland  
Donald Steely



Beverly Townsel  
Stephen Shiflett  
Lou Dudley  
Kenneth Moore  
Mary Mountain



Nelson Woods  
Kay Taylor  
Larry Bouldin  
Brenda Sargent  
Melvin Williams



Bobby Culpepper  
 Betty Conaway  
 Jack Turner  
 Anella Bain  
 Delaine Burton



Pat Stewart  
 Bartley Stone  
 Linda Pruett  
 Ronald Whisenant  
 Loretta Roden



Terry Mitchell  
 Jane Satterfield  
 Diaz Frost  
 Bea Porter  
 Ralph Thornhill



Marge Murphy  
 Eugene Sewell  
 Claudine Hilley  
 Eddie Goolesby  
 Donna Brookshire



Jerry Manning  
 Shirley Bryant  
 Leonard Gray  
 Connie Lester  
 Jerry Cisco



Faye Suggs  
 Gleen Reed  
 Allace Sarten  
 Michael Callahan  
 Betty Foshee

# Junior II



Shirley Darwin



Teresa Rush  
Peggy Paschal  
Linda Coleman  
Danette Gorham  
Helen Bryant

Sherry  
David  
Diane  
Bill S  
Sue V

Rick  
Sheila  
James  
Glenn  
Wood

Char  
Billy  
Jean  
Ralph  
Barb

Barbara Callahan  
Dennis Hardeman  
Patty Hicks  
Roger Phillips  
Alice Britton



Ira Griffis  
Wanda Johnson  
Sammy Vance  
Janet Travis  
Sandra Hancock



Joyce Gray  
Nancy Talley  
Charlotte Jeffery  
Larry Beavers  
Judy Farmer



Sherry Brown  
David Richey  
Diane Carter  
Bill Spears  
Sue Venable



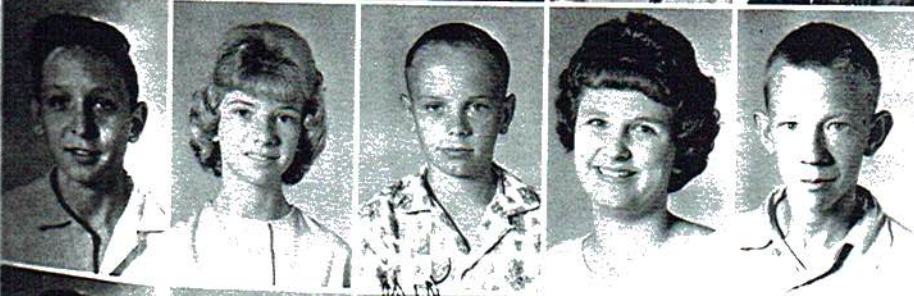
Ricky Ragsdale  
Sheila Roden  
James Brown  
Glenda Adams  
Woodrow Pruett



Charlise Moore  
Billy Camp  
Jeanette Bethune  
Ralph Hall  
Barbara Murphy



Kathy Wheeler  
Mark Graham  
Diane Davidson  
Ronny King  
Jeanette Lemons



Larry Brown  
Mary Young  
Ray Culpepper  
Sally Patterson  
David Sartin

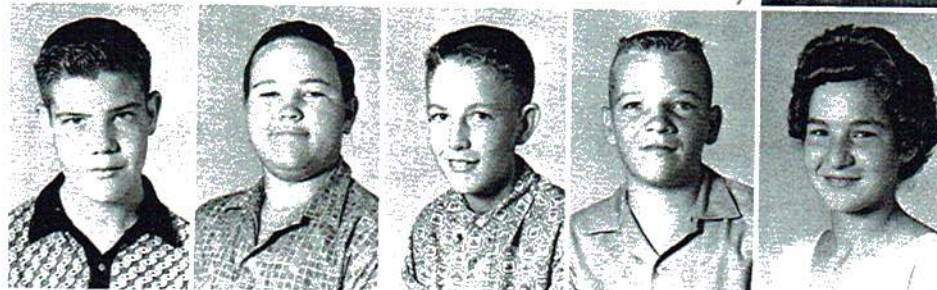


Carol Tidwell  
Freddy Waldrop  
Sandra Conaway  
Ronald Roberts  
Helen Webster

## Junior I



Donnie Gant  
Jerry Suggs  
Eugene Owens  
Micheal Moore  
Larry Sargent

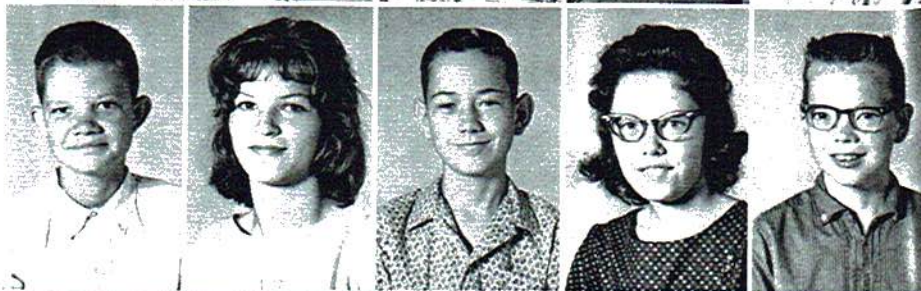


Danny Sarten  
Roland Fairbanks  
Norman Manning  
Gary Brown  
Alvina Stone

Myra Meeks  
Gwen Gorham  
Linda Williams  
Jerry Smith  
Faye Martin



Wayne Wheeler  
Glenda Hall  
Don Moore  
Regina Tanner  
Kerry Travis



Charlotte Hughes  
Larry Millican  
Mary Vaughn  
Mary Precise  
Charles Bain



Alice Collins  
 Dwight Gorham  
 Jeanne Rollins  
 Ronald Shiflett  
 Martha Kuykendall



Roger Pruett  
 Cora Young  
 Ricky Whitmire  
 Loretta Young  
 Ricky Davis



Melisha Woods  
 Ronald Towers  
 Nadra Whisenant  
 Wayne Richie  
 Mattie Ferguson



Linda Murphy  
 Wayne Hawkins  
 Frances Bain  
 Billy Davis  
 Joan Hicks

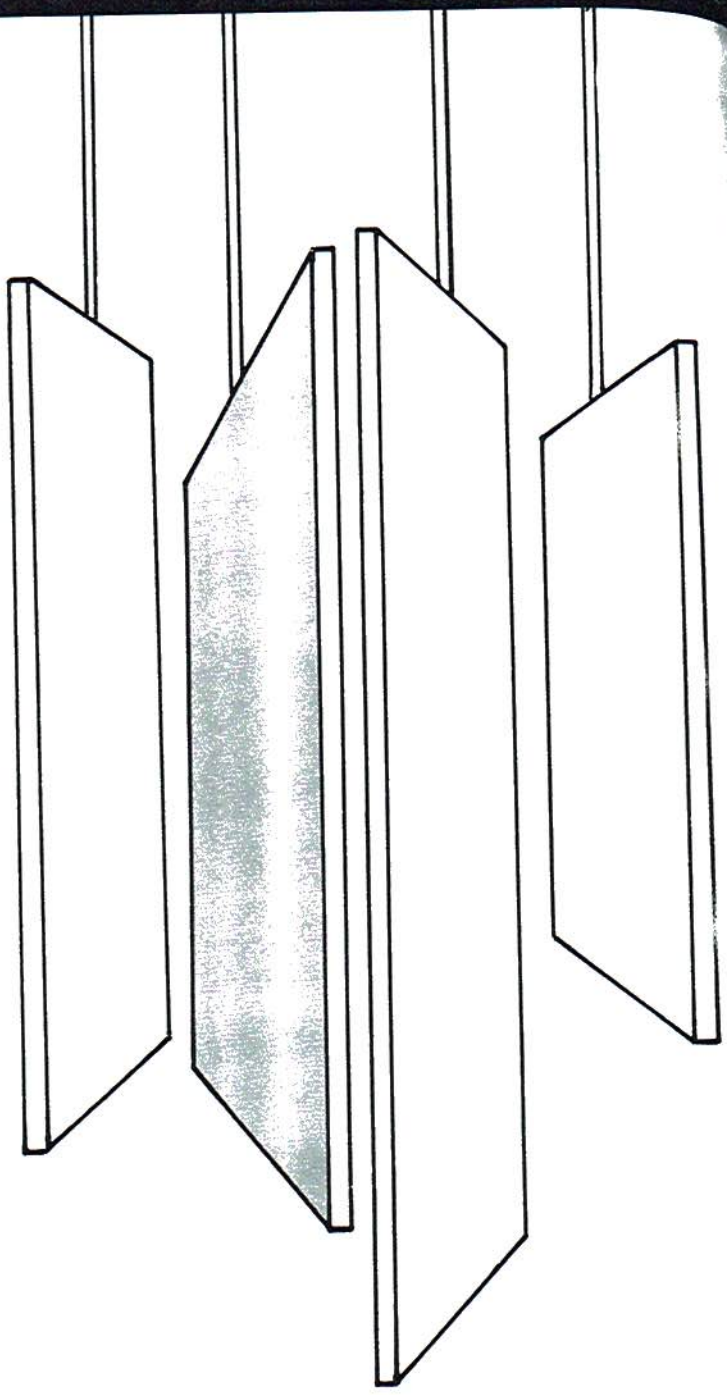
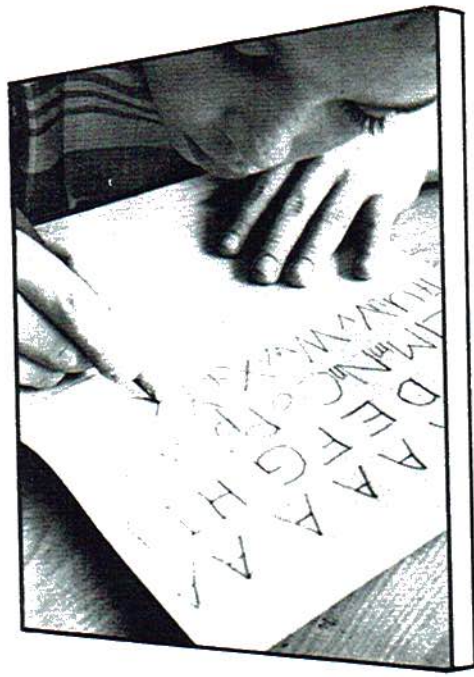


John Presley  
 Dianne Samples  
 Larry Brown  
 Judy Brown  
 TheroId Medlock



Veronica Newell  
 Gary Skelton  
 Wanda Riddle  
 Sammy Townson  
 Connie Guffy





Dan  
 Bart  
 Doy  
 Sue  
 Bill  
 Kay  
 Abt  
 Toi  
 Lat  
 Fre  
 Sar  
 Jar

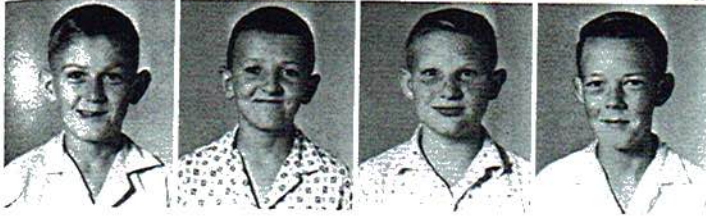
Da  
 Be  
 Eri  
 Ke  
 Br  
 M

J.  
 P  
 S  
 C  
 S  
 E

# ELEMENTARY



Eddie Wheeler  
David Gifford  
Tommy Turner  
Sonny Barns  
David Patterson



Leon Hicks  
Randy Satterfield  
Hiram Shifleit  
Mike Ragan

## Sixth Grade

Danny Murphy  
Barbara Allen  
Doyle Fairbanks  
Sue Grider  
Billy Bowlen  
Kay Hicks



Abby Goolesby  
Tommy Davis  
Laura Hancock  
Freddie Kuykendall  
Sandra Brewster  
James Porter



Danny Suggs  
Betty Bowlen  
Ernest Moore  
Kathy Burton  
Bruce Roden  
Mary Gray



Janis Garner  
Paul Brown  
Sheila Paschal  
Cecil Brown  
Sybil Brown  
Bobby King



Rebecca Carson  
 Ray King  
 Nancy Gant  
 Mike Jones  
 Melendia Ferguson



Danny Guffy  
 Danny Lester  
 Macell Lester  
 Mike Frost



## *Fifth Grade*



Suzanne Gray  
 Windell Roberts  
 Edna Mae Britton  
 Myron Ferguson  
 Cheryl Lambret  
 Larry Porter



Mike Maddox  
 Betty Sartin  
 Windell Burton  
 Marie Whisenant  
 Larry Grider  
 Kathy Blankenship



Pat Vaughn  
 Clinton Roden  
 Cheryl Gorman  
 Frankie Hicks  
 Marsha Roberts  
 Christopher Underwood



Glenn Cooper  
 Donna Jo Woods  
 David Brown  
 Kay Wheeler  
 Rickey Smith  
 Carolyn Pope

E  
 T  
 C  
 L  
 D  
 D

A  
 J  
 C  
 I  
 I



Beverly Hancock  
Jane Suggs  
Cynthia Underwood

## *Fourth Grade*

Edward Roy Brown  
Teresa Millican  
Gerald Glenn Carson  
Lena Jane Flshee  
Dale Woods  
Deborah Roberts



Annie Whisenant  
Johnny Lester  
Carolyn Gamble  
Eddie Wheeler  
Bernice Baine  
Mark Rush



Teddy Traylor  
Ginger Starkey  
David Patterson  
Ann Conaway  
Paul Ray Moore  
Teresa Tipton



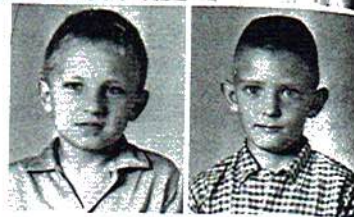
Charles Goolesby  
Sheila Whitmire  
Bobby Joe Liles  
Sharon Roden  
Judith Gail Young



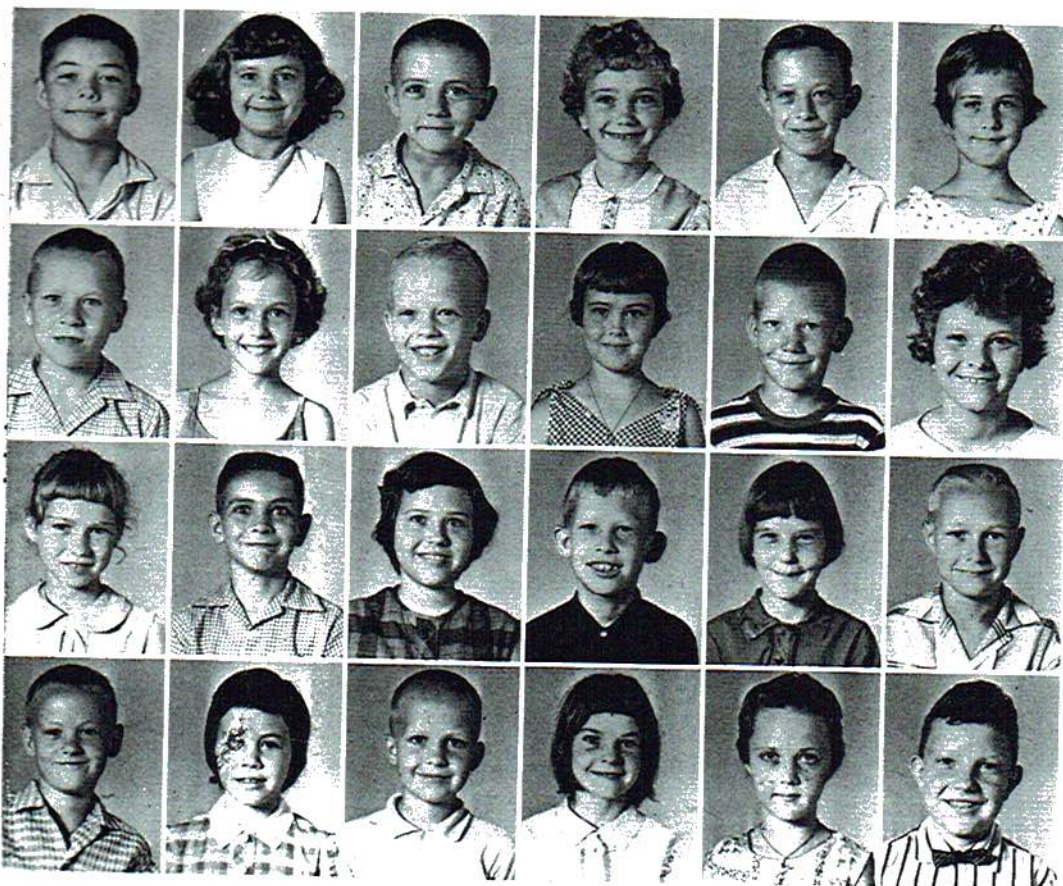
Donna Patterson  
 Eugene Wilborn  
 Pamela Frost  
 Don Presley  
 Ruth Riddle



Alfred Burton  
 Tony Culver



## *Third Grade*

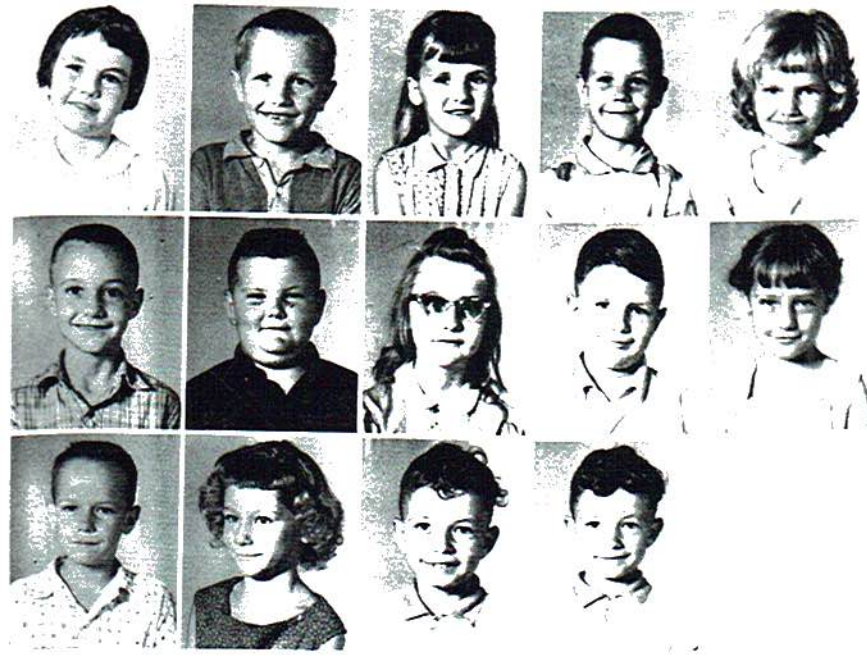


Rickey Clark  
 Diane Moses  
 Gregory Wheeler  
 Gloria Moore  
 Jimmy Kuykendall  
 Sheila Rickey

Blane Roberts  
 Claudette Freeman  
 Terry Jones  
 Patsy Townsell  
 Ronnie Richey  
 Rhonda King

Madge Precise  
 Freddy Roberts  
 Sarah Turner  
 Timothy Tidwell  
 Paulene Relford  
 Lindon Hicks

Butch Gant  
 Linda Gamble  
 John Hughes  
 Judy Grider  
 Linda Frost  
 Dennis Ledford



Faint, illegible text on the right side of the page, possibly bleed-through from the reverse side.

*Second Grade*

- Doris Barnes
- Eugene Rollins
- Jeanette Moses
- Terry Hall
- Barbara Moore
- Eddie Smith
  
- James Patterson
- Karen Roberts
- Greg Medlock
- Kathy Kilgore
- David Tidwell
- Shelby Fuller
  
- Marie Lester
- Dale Hicks
- Polly Young
- Brent Paschal
- Amy Smith
- Michael Hicks
  
- Billy Brown
- Mary Sartin
- Bethel Wheeler
- Yvonne Simpson
- Dwight King
- Annette Moses



Eddy Patterson  
Kay Hughes



## *First Grade*

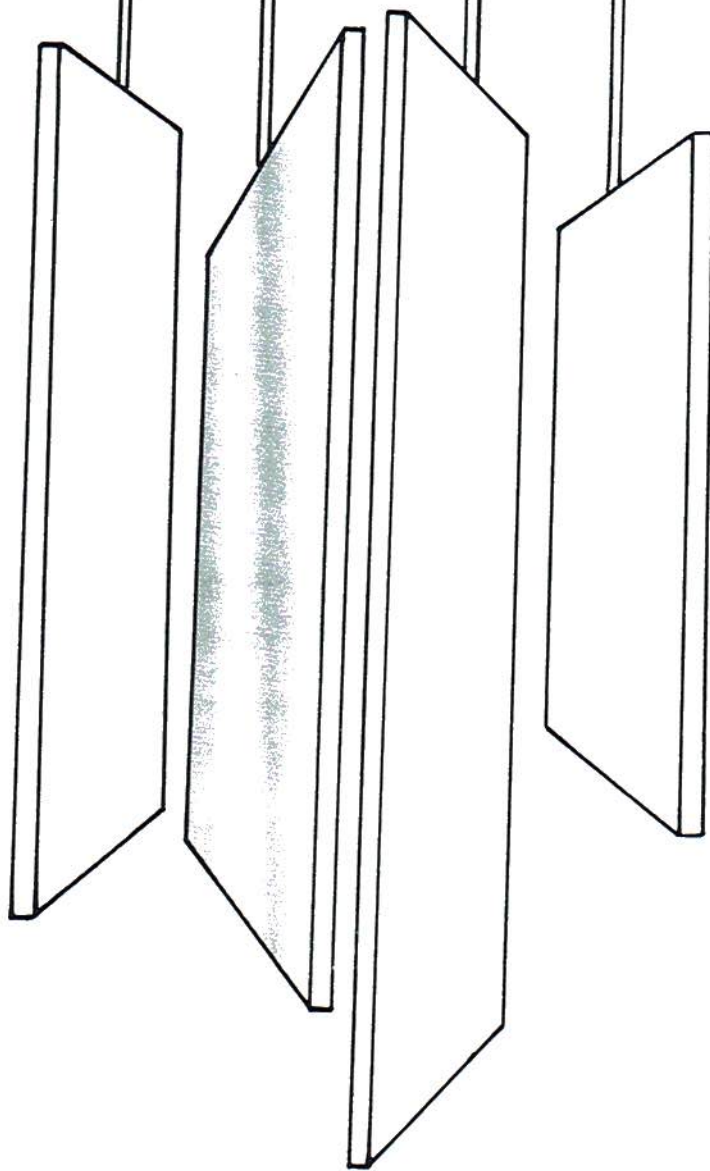
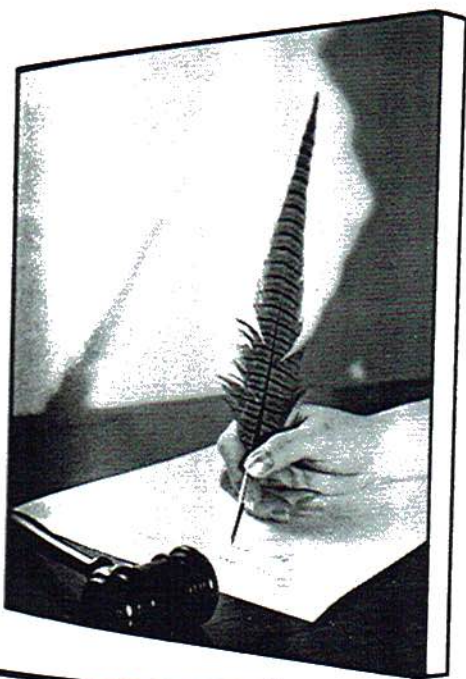


Don Roberts  
Lisa Hicks  
Ricky Wheeler  
Donna Roberts  
Gwin Whisenant  
Jane Gray

Ann Shiflett  
Danny Starkey  
Lynn Rogers  
Billy Sartin  
Kathy Suggs  
Gerald Jones

Alvin Burton  
Sharon Garner  
Danny Williams  
Debra Tartin  
David Grider  
Shirley Pope

Linda Riddle  
Vernon Clifton  
Martha Ledford  
David Young  
Sandra Roberts  
Jerome Millican



# ORGANIZATIONS





## *Beta Club*

President - PATSY BUCKNER  
 Secretary - WANDA EDWARDS  
 Reporter - ELAINE CARROLL

Vice-President - SUE THOMPSON  
 Treasurer - JAMES BURGESS  
 Sponsor - MRS. LILLIAN ARNOLD



## *Citizenship Club*

President - WANDA EDWARDS  
 Secretary - SUE THOMPSON

Vice-President - RAYBURN WEST  
 Treasurer - THELDA FREEMAN

Sponsor - MR. PAUL COOLEY



## *Library Club*

President - PATSY BUCKNER

Vice-President - GLENDA TRIPP

Secretary-Treasurer - PEGGY ANDERSON

Sponsor - MRS. FLORA BURKHALTER

Reporter - CARLENE McCARSON



## *Paper Staff*

Editors - JUDY WHEELER  
NANCY ALLEN

Sponsor - MISS BETTY WHITE



## *F.H.A.*

President - MARY SMITH

Vice-President - THELDA FREEMAN

Reporter - BRENDA TIPTON

Secretary - CAROLYN SHRADER

Sponsor - MRS. DORIS SLATER



## *F.T.A.*

President - SONJA CAPERTON

Vice-President - JANIS SHRADER

Secretary - CAROLYN SHRADER

Historian - LINDA KOGER

Sponsor - MRS. JEWEL WHEELER



## *Dramatics Club*

President - LARRY KNIGHT

Vice-President - DAVID MILLICAN

Secretary - LINDA KOGER

Treasurer - JUDY PEEK

Sponsor - MRS. ELIZABETH COOLEY



## *Glee Club*

Sponsor: MR. JERRY MATTHEWS



## *F.F.A.*

President - BILL SAMPSON  
 Secretary - LARRY WINTERS  
 Reporter - DARWIN LESTER

Vice-President - CALVIN GANT  
 Treasurer - RONNIE HENDRICKS  
 Sponsor - MR. ERNEST PRUETT





## *Lettermen's Club*

President - DAVID MILLICAN  
Secretary - MARY BURKHALTER  
Reporter - JAMES BURGESS

Vice-President - DON BURKHALTER  
Treasurer - PATSY BUCKNER  
Sponsor - MR. SAM KENIMER



## *Annual Staff*

Catch your breath there's still more to come!!!  
The END is nearing!



### *Junior High 4-H Club*

President - BURKETT PENDERGRASS  
 Vice-President - ROGER PRUETT  
 Sponsor - MR. CLAUDE THORNHILL

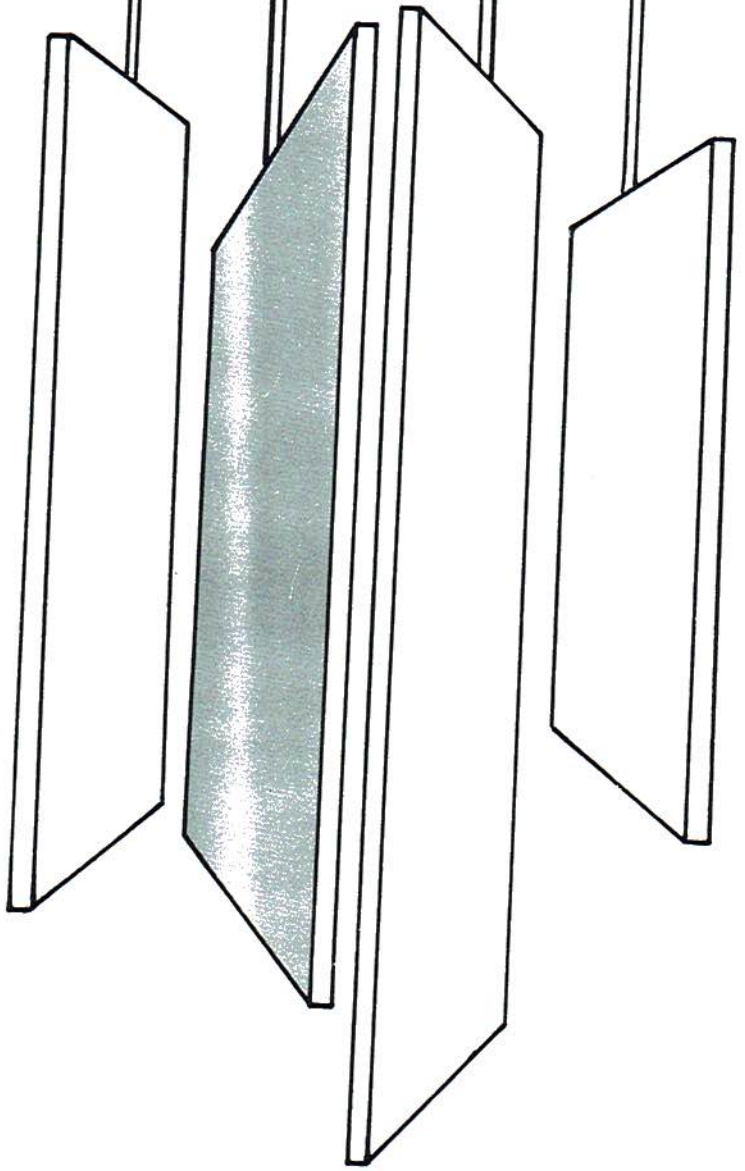
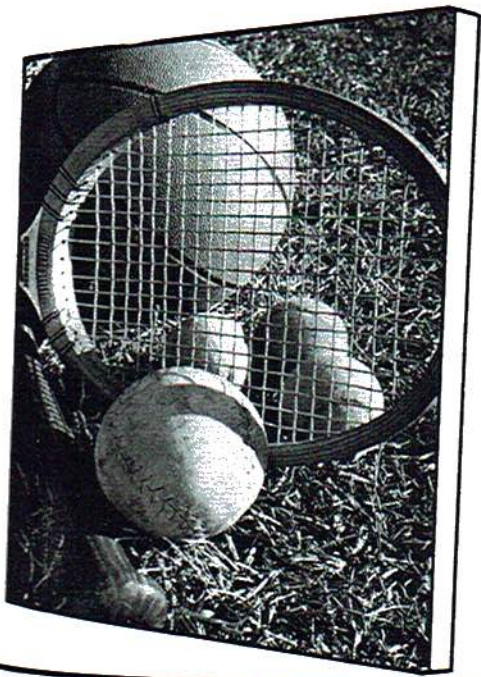
President - MARTHA PRECISE  
 Vice-President - LINDA PRUETT  
 Sponsor - MRS. BRENDA NIX



### *Elementary 4-H Club*

President - TOMMY TURNER  
 Vice-President - DAVID PATTERSON  
 Sponsor - MRS. COOPER

President - ABBY GOOLESBY  
 Vice-President - SANDRA BREWSTER  
 Sponsor - MRS. SKINNER



---

---

# ATHLETICS





LINDA BRYANT

*Miss Homecoming Queen*

1963-64

Q  
u  
e  
e  
n  
s



C  
o  
u  
r  
t

Bryant - Millican, Precise - Tidwell, Hughes - Wheeler, Tidwell - Frost,  
Tipton - Traylor, Hicks - Turner



QUEEN - Linda Bryant  
ESCORT - David Millican

PRINCESS - Madge Precise  
ESCORT - Tim Tidwell

Hicks - Medlock, Gray - Ferguson, Stone - Gant, Rowe - Pyborn, Tip-  
ton - Stone, Junior High Princess - Kathy Roden - Escort - James Darwin





D. Burkhalter



D. Millican



R. West



R. Stone



D. Stone



BACKS



F. Starkey



E. Hilley



B. Guffey



J. McCrary



B. Marr



R. West



L. Laney



J. Moore



J. C. Moore



LINEMEN



G. Porter



J. D. Smalley



E. Bryant



T. Crawford



J. Johnson



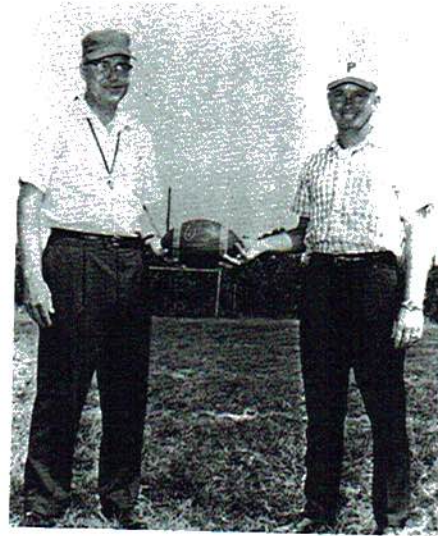
D. Jones



SENIORS



CAPTAINS

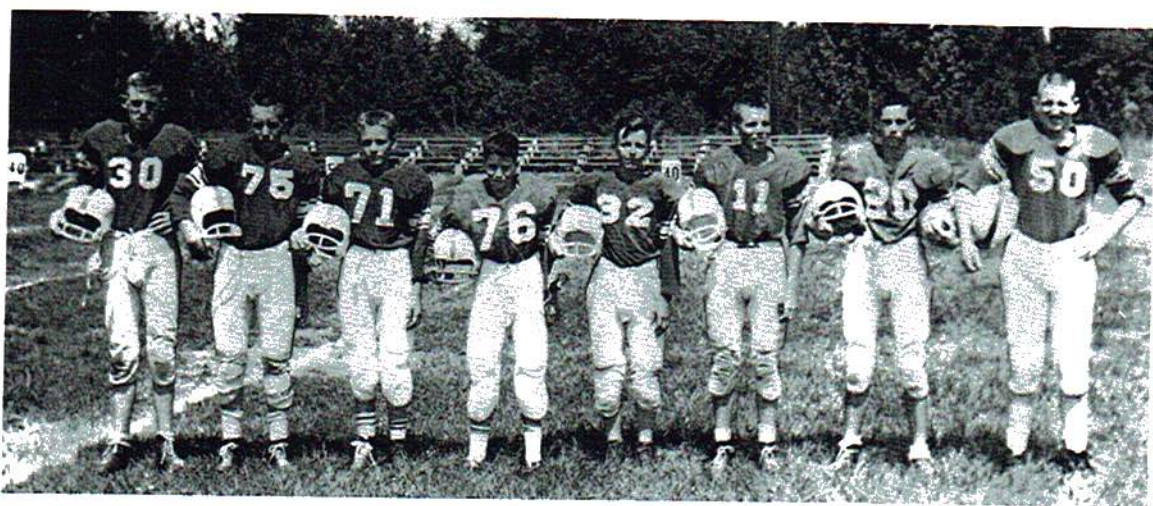


COACHES

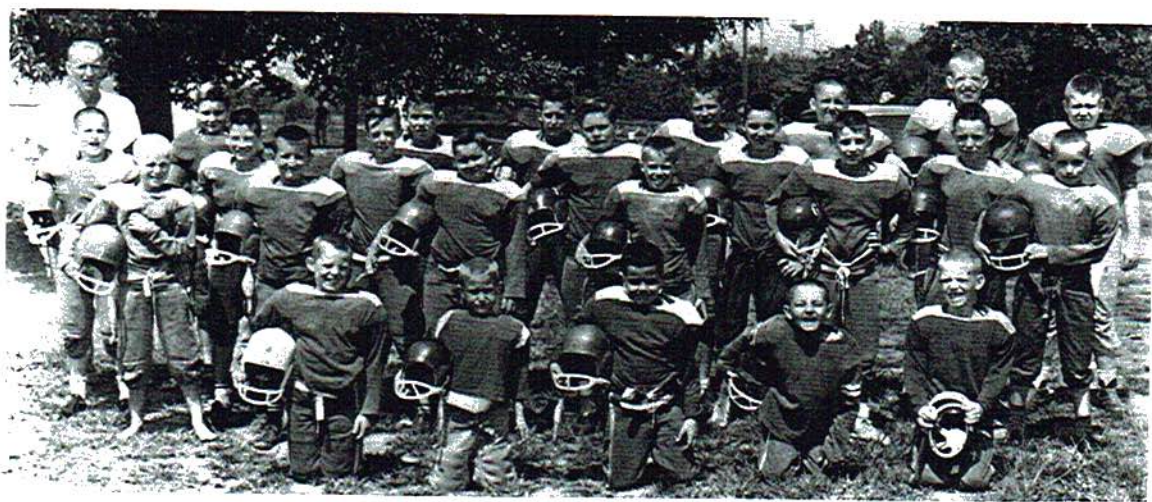




VARSITY



JUNIORS



PEE WEE'S



Ann Hampton



Yvonne Lambert



Pat Stewart



Sandra Gifford



Sherry Millican



Sponsor: Mrs. Elizabeth Cooley



Mary Burkhalter



Pain Clark



Linda Pruett



Don Burkhalter, Senior



John Deerman, Senior



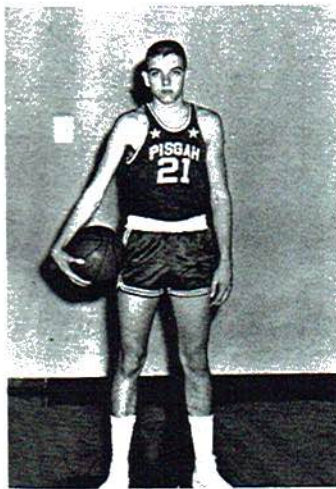
J. C. Moore, Senior



Gerald Brookshire, Junior



Wallace Tinker, Junior



Mike Cooley, Junior



Dale Stone, Sophomore

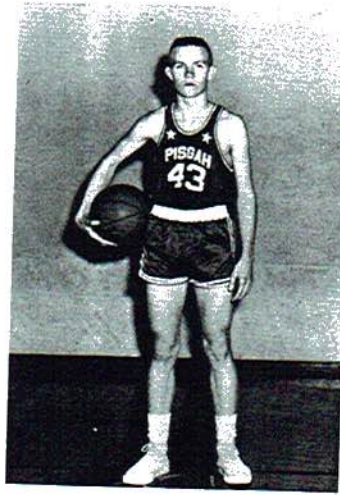


C. D. Wright, Junior

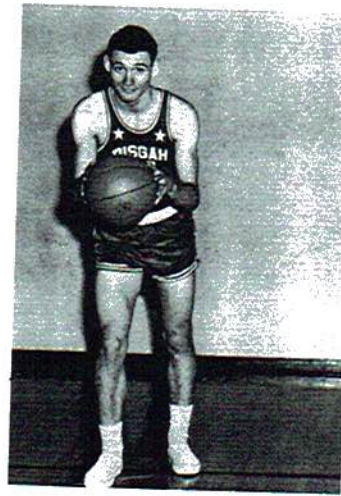




Terry Crawford, Junior

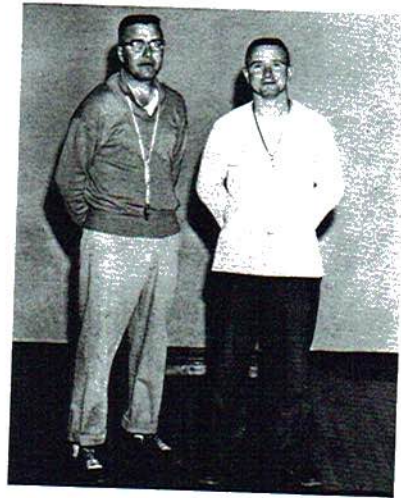


Frankie Starkey, Sophomore



Edward Hilley, Junior

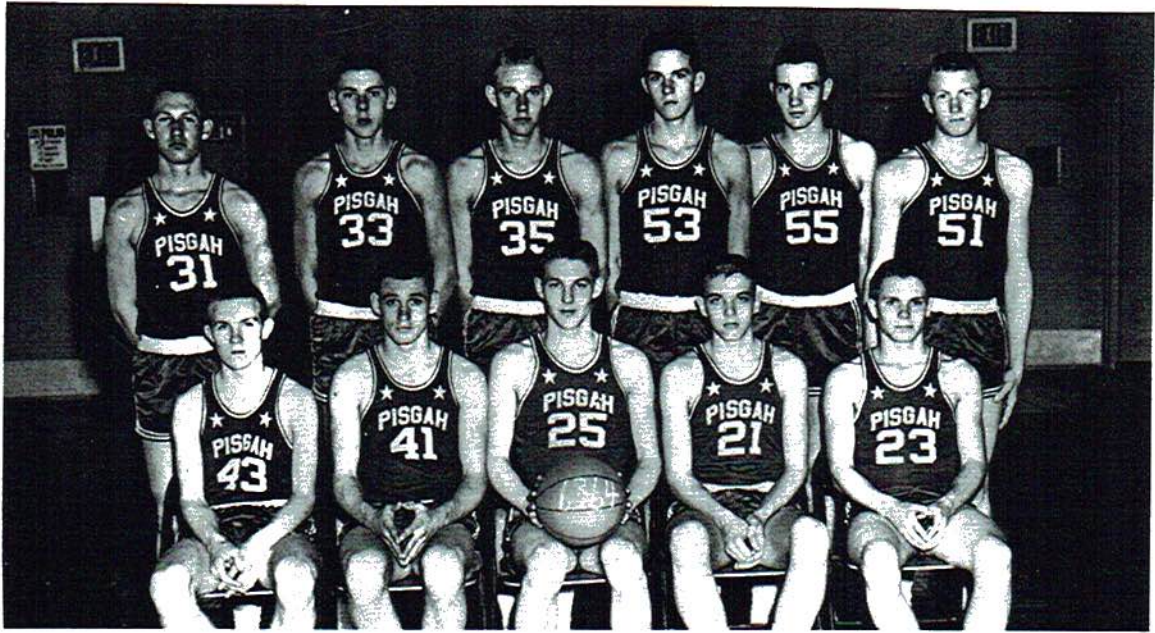
Paul Cooley  
HEAD COACH



Sam Kenimer  
ASSISTANT COACH



MANAGERS: Burgess, Buckner, Stone, Pickett.



Don Burkhalter

CO-CAPTAINS  
"A"  
TEAM

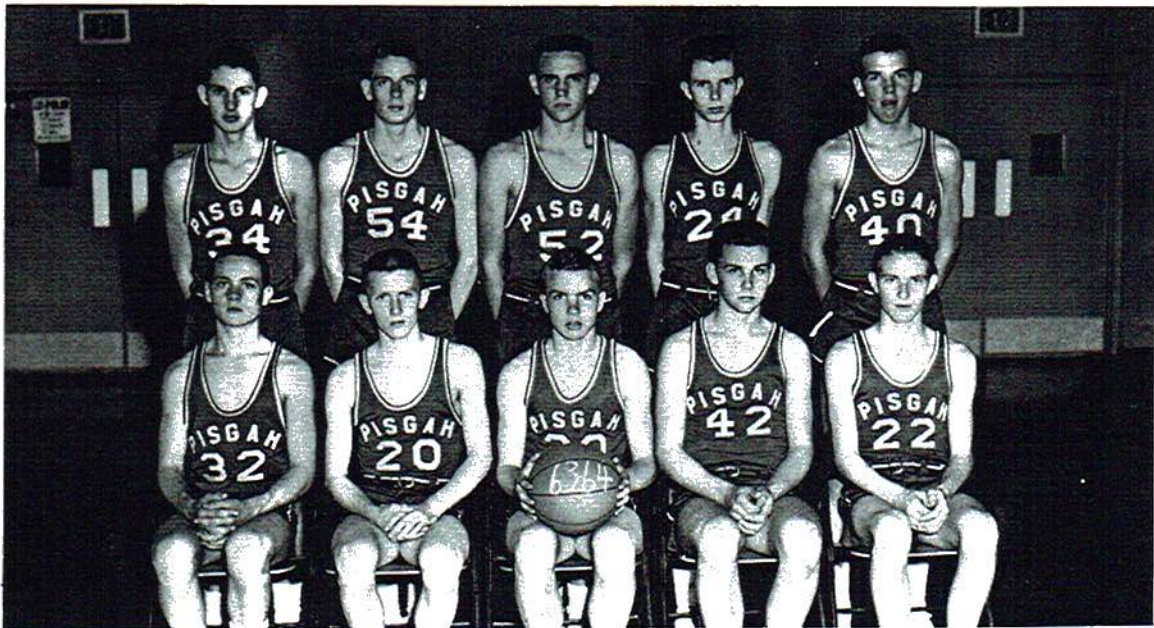
John Deerman

## *The '63-'64 Eagles*

"B"  
TEAM  
CO-CAPTAINS

James Edwards

Wayne Dunn





JUNIOR "A" TEAM



JUNIOR "B" TEAM



PEE WEES



*Mr. and Miss P.H.S.*

J. C. MOORE

SANDRA GIFFORD

We hope you have enjoyed and will always treasure this journey through our 1964 EAGLE.